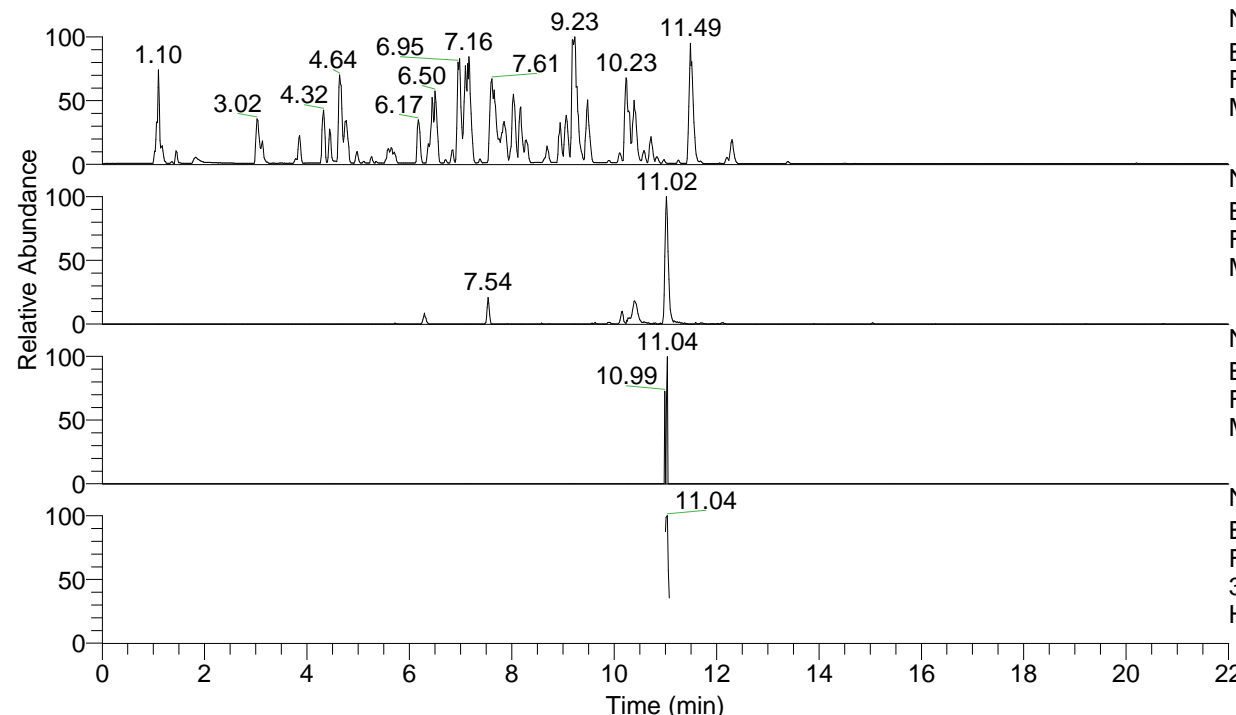


RT: 0.00 - 22.00



NL: 4.98E7
 Base Peak m/z= 100.00000-1500.00000 F:
 FTMS + p ESI Full ms [100.00-1500.00]
 MS Hololenasp

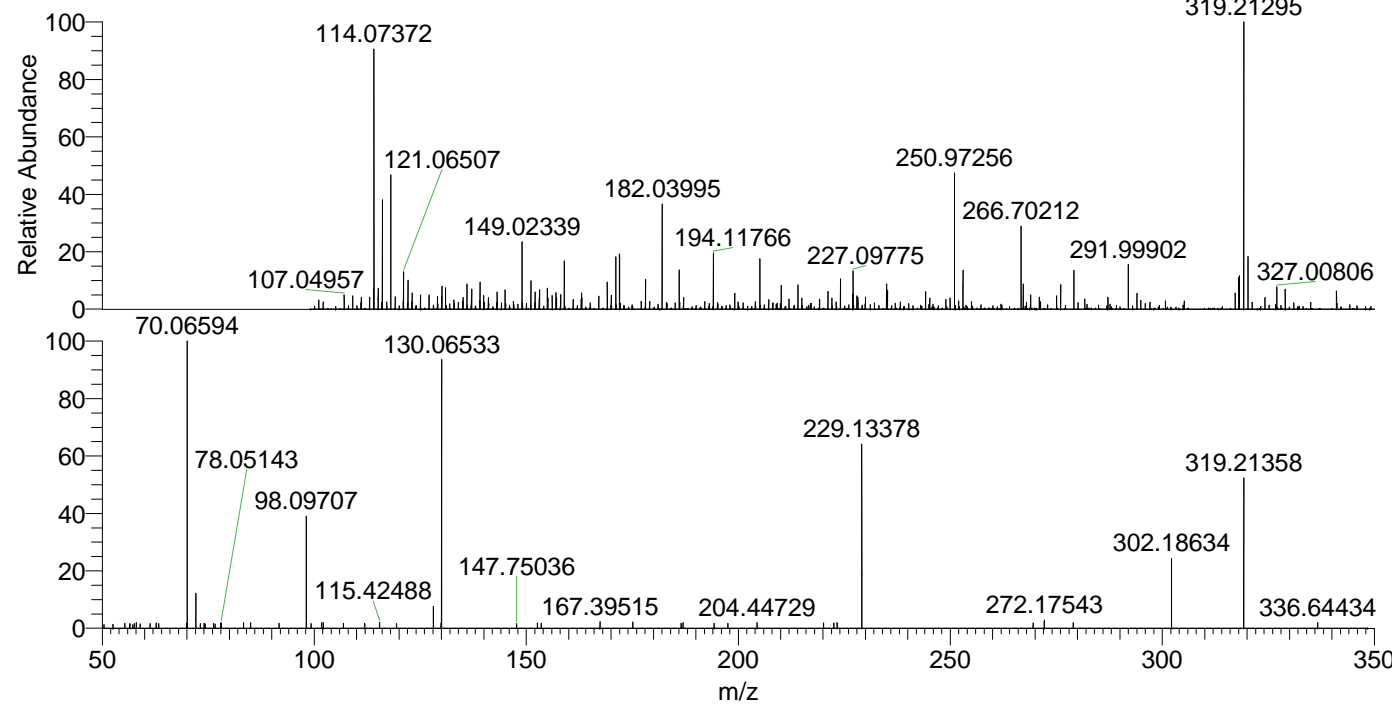
NL: 5.25E5
 Base Peak m/z= 319.21180-319.21500 F:
 FTMS + p ESI Full ms [100.00-1500.00]
 MS Hololenasp

NL: 1.84E3
 Base Peak m/z= 160.10981-160.11141 F:
 FTMS + p ESI Full ms [100.00-1500.00]
 MS Hololenasp

NL: 4.34E4
 Base Peak m/z= 50.00000-1500.00000 F:
 FTMS + p ESI d Full ms2
 319.21@hcd35.00 [50.00-345.00] MS
 Hololenasp

Hololenasp#4409-4431 RT: 11.00-11.06
 F: FTMS + p ESI d Full ms2 319.21 ...
 m/z= 50.00000-1000.00000

m/z	Intensity	Relative
52.56538	516.0	1.47
55.30654	597.5	1.70
56.56597	574.0	1.63
57.59519	575.6	1.64
58.06591	696.5	1.98
58.93931	544.5	1.55
61.25591	590.8	1.68
62.68626	645.3	1.84
63.34627	547.7	1.56
63.35624	567.7	1.61
69.89363	636.0	1.81
70.06594	35164.5	100.00
72.08158	4369.1	12.42
73.14183	580.0	1.65
74.01000	601.0	1.71
74.29209	531.4	1.51
76.20407	551.2	1.57
76.58740	543.8	1.55
77.96127	627.9	1.79
78.05143	650.2	1.85
83.31647	681.3	1.94
83.35500	589.9	1.68
84.96850	706.4	2.01
91.71135	604.7	1.72
98.09707	14010.5	39.84
99.25654	597.0	1.70
101.72867	698.0	1.98
102.15936	684.6	1.95
106.86259	612.1	1.74
111.90091	621.0	1.77
115.42488	765.0	2.18
119.38846	567.0	1.61
128.10713	2699.6	7.68
129.93745	651.0	1.85
130.06533	33678.2	95.77
147.75036	583.3	1.66
152.64029	647.7	1.84
153.55028	637.1	1.81
167.39515	794.3	2.26
175.14875	753.7	2.14
186.51629	632.2	1.80
187.00130	670.0	1.91
194.32367	628.8	1.79
197.53920	629.0	1.79
204.44729	685.1	1.95
220.13255	646.5	1.84
222.55329	648.5	1.84
223.32487	684.0	1.95
229.13378	22987.8	65.37
269.55280	674.3	1.92
272.17543	1038.4	2.95
278.99090	670.7	1.91
302.18634	8532.9	24.27
319.21358	18364.4	52.22
336.64434	718.9	2.04



NL: 5.05E5
 Hololenasp#4417 RT:
 11.02 AV: 1 T: FTMS + p
 ESI Full lock ms
 [100.00-1500.00]

NL: 3.51E4
 Hololenasp#4408-4433
 RT: 11.00-11.06 AV: 5 F:
 FTMS + p ESI d Full ms2
 319.21@hcd35.00
 [50.00-345.00]