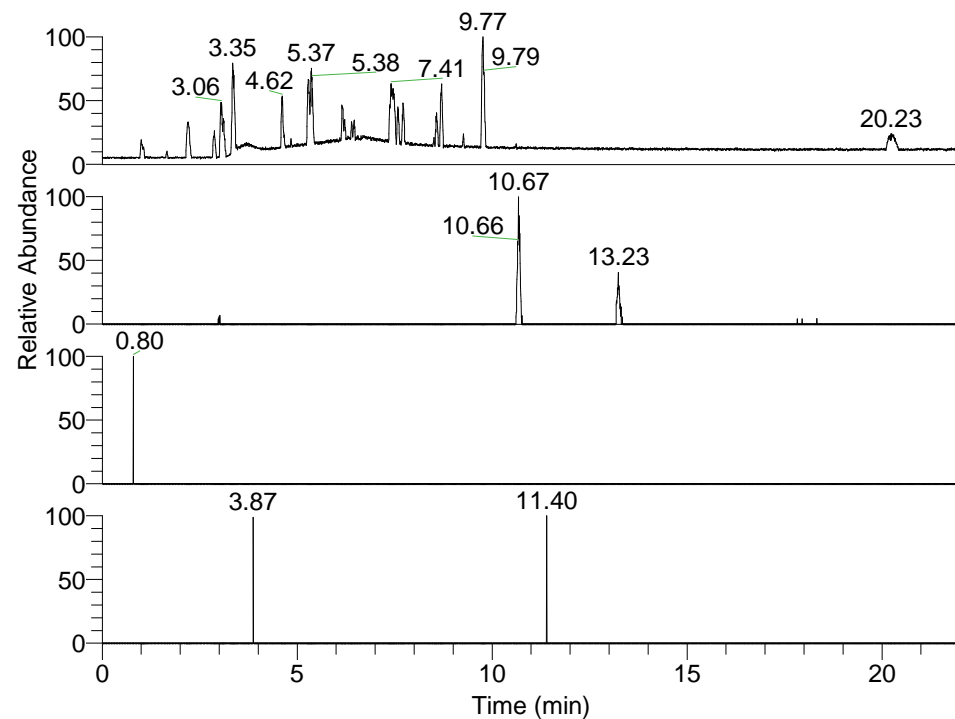
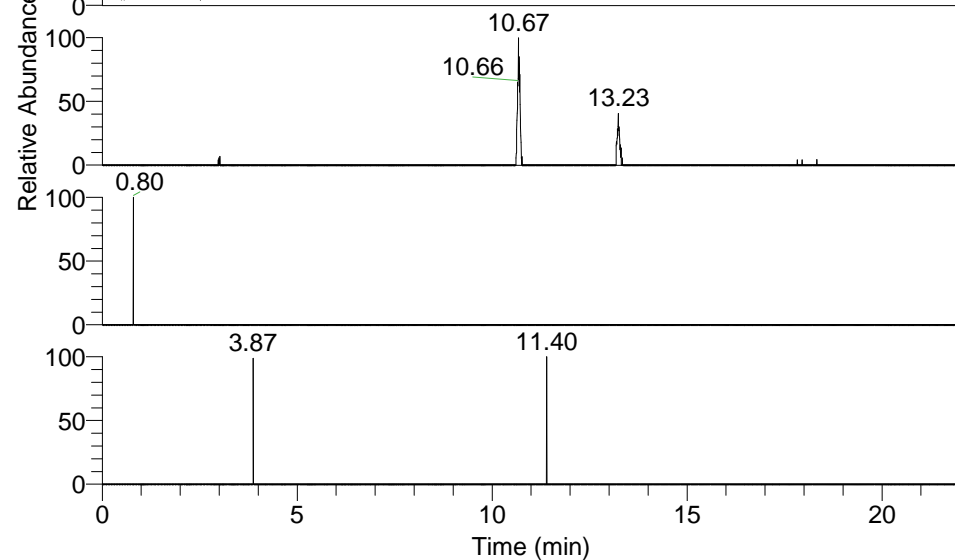


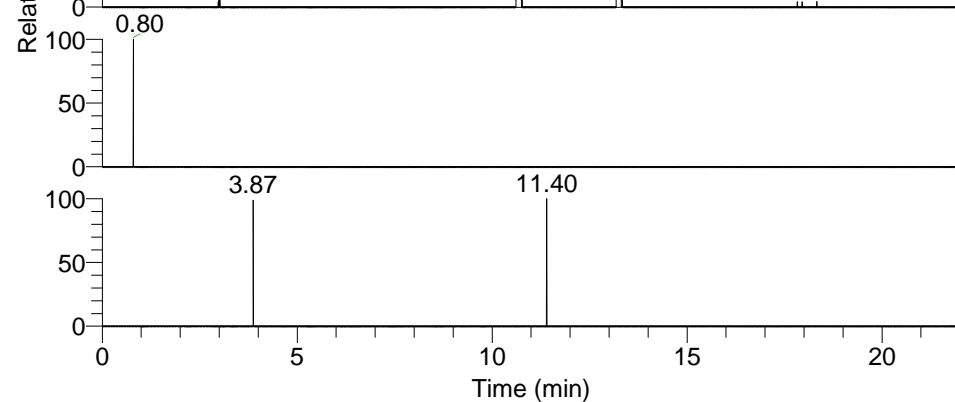
RT: 0.00 - 22.01



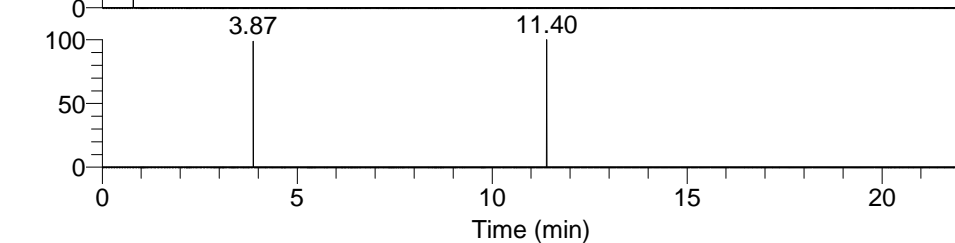
NL: 1.37E8  
Base Peak m/z=  
100.00000-1500.00000 F: FTMS + p  
ESI Full ms [100.00-1500.00] MS  
Hololenasp\_HDX



NL: 7.47E4  
Base Peak m/z= 321.23537-321.23859  
F: FTMS + p ESI Full ms  
[100.00-1500.00] MS Hololenasp\_HDX



NL: 1.90E3  
Base Peak m/z= 161.62473-161.62635  
F: FTMS + p ESI Full ms  
[100.00-1500.00] MS Hololenasp\_HDX

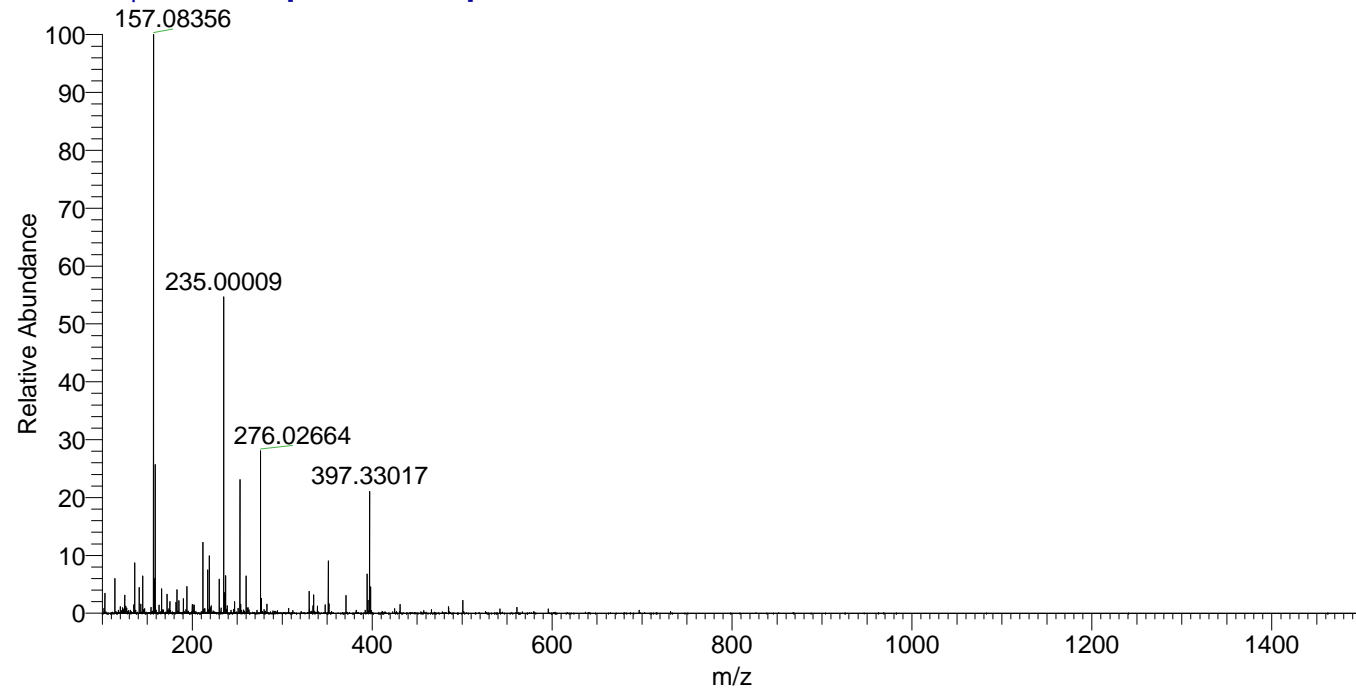


NL: 3.05E3  
Base Peak m/z= 436.23394-436.23830  
F: FTMS + p ESI Full ms  
[100.00-1500.00] MS Hololenasp\_HDX

Hololenasp\_HDX#1733 RT: 10.67  
T: FTMS + p ESI Full ms [100.00-1500.00]  
m/z= 321.00000-322.00000

m/z	Intensity	Relative	Delta (ppm)	Composition
321.23639	50804.0	100.00	-0.14	C <sub>18</sub> H <sub>25</sub> <sup>2</sup> H <sub>3</sub> O <sub>2</sub> N <sub>3</sub>
			4.68	C <sub>18</sub> H <sub>23</sub> <sup>2</sup> H <sub>4</sub> O <sub>2</sub> N <sub>3</sub>
			-4.96	C <sub>18</sub> H <sub>27</sub> <sup>2</sup> H <sub>2</sub> O <sub>2</sub> N <sub>3</sub>

Hololenasp\_HDX #1733 RT: 10.67 AV: 1 NL: 1.78E7  
T: FTMS + p ESI Full ms [100.00-1500.00]



Hololenasp\_HDX #1733 RT: 10.67 AV: 1 NL: 6.75E5  
T: FTMS + p ESI Full ms [100.00-1500.00]

