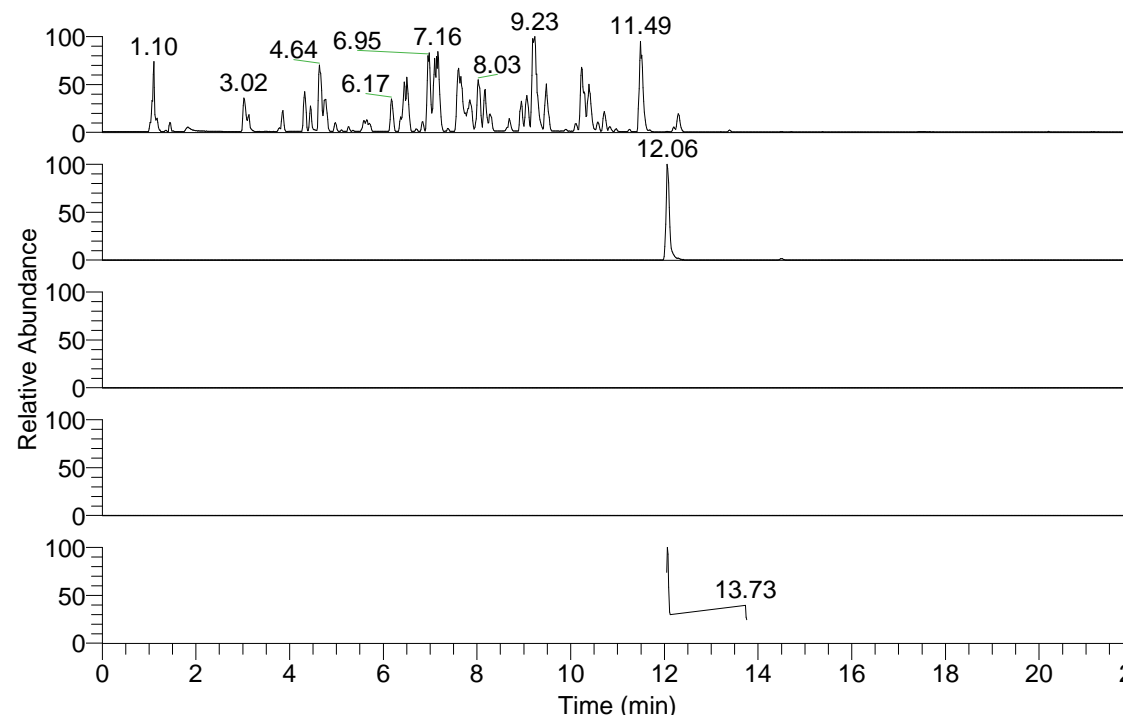


RT: 0.00 - 22.00



NL: 4.98E7  
 Base Peak m/z = 100.00000-1500.00000 F: FTMS + p ESI Full ms [100.00-1500.00] MS Hololenasp

NL: 5.07E5  
 Base Peak m/z = 318.21656-318.21974 F: FTMS + p ESI Full ms [100.00-1500.00] MS Hololenasp

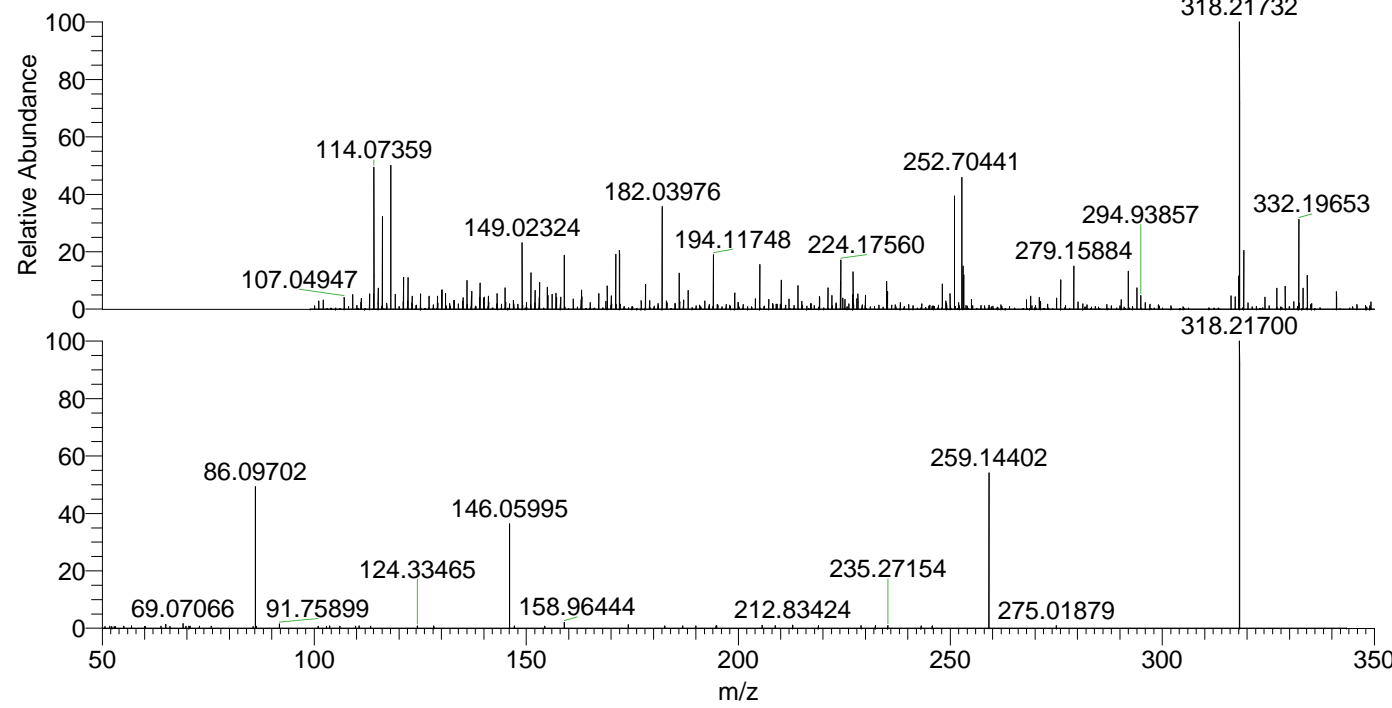
NL: 0  
 Base Peak m/z = 156.61221-156.61377 F: FTMS + p ESI Full ms [100.00-1500.00] MS Hololenasp

NL: 0  
 Base Peak m/z = 432.20886-432.21318 F: FTMS + p ESI Full ms [100.00-1500.00] MS Hololenasp

NL: 1.22E5  
 Base Peak m/z = 50.00000-1500.00000 F: FTMS + p ESI d Full ms2 318.18@hcd35.00 [50.00-340.00] MS Hololenasp

Hololenasp#4828-4851 RT: 12.05-12.11  
 F: FTMS + p ESI d Full ms2 318.18 ...  
 m/z = 50.00000-1000.00000

m/z	Intensity	Relative
50.60963	505.4	0.61
51.79465	553.4	0.66
52.26288	532.4	0.64
52.81378	465.2	0.56
53.15524	558.5	0.67
55.07583	561.3	0.67
56.91216	651.6	0.78
59.99308	542.5	0.65
60.16267	532.3	0.64
63.86875	579.7	0.70
64.97818	1173.7	1.41
65.98115	528.0	0.63
69.07066	1297.6	1.56
69.74989	579.8	0.70
70.45743	585.0	0.70
70.71956	585.6	0.70
72.92324	579.7	0.70
75.67716	646.6	0.78
85.59556	551.9	0.66
86.09702	41342.8	49.62
86.31670	558.1	0.67
91.75276	712.7	0.86
91.75899	1210.3	1.45
100.93012	647.3	0.78
102.90850	606.4	0.73
103.61399	695.8	0.84
106.01989	581.0	0.70
109.74719	593.6	0.71
110.55335	660.6	0.79
113.30535	635.5	0.76
124.33465	728.7	0.87
128.20596	687.3	0.82
146.05995	30852.7	37.03
147.18958	646.5	0.78
154.37456	594.1	0.71
158.96444	1651.6	1.98
174.05441	1074.7	1.29
182.69441	648.1	0.78
186.89849	684.0	0.82
189.99325	730.5	0.88
194.74888	718.4	0.86
194.89660	739.0	0.89
205.61232	852.8	1.02
208.72119	775.3	0.93
212.83424	922.8	1.11
218.87984	750.4	0.90
228.97301	788.3	0.95
232.31869	783.6	0.94
235.27154	749.3	0.90
243.11881	665.2	0.80
245.74945	659.3	0.79
259.14402	44419.9	53.31
275.01879	795.5	0.95
318.21700	83322.6	100.00



NL: 5.00E5  
 Hololenasp#4831 RT: 12.06 AV: 1 T: FTMS + p ESI Full lock ms [100.00-1500.00]

NL: 8.19E4  
 Hololenasp#4825-4855 RT: 12.05-12.11 AV: 5 F: FTMS + p ESI d Full ms2 318.18@hcd35.00 [50.00-340.00]