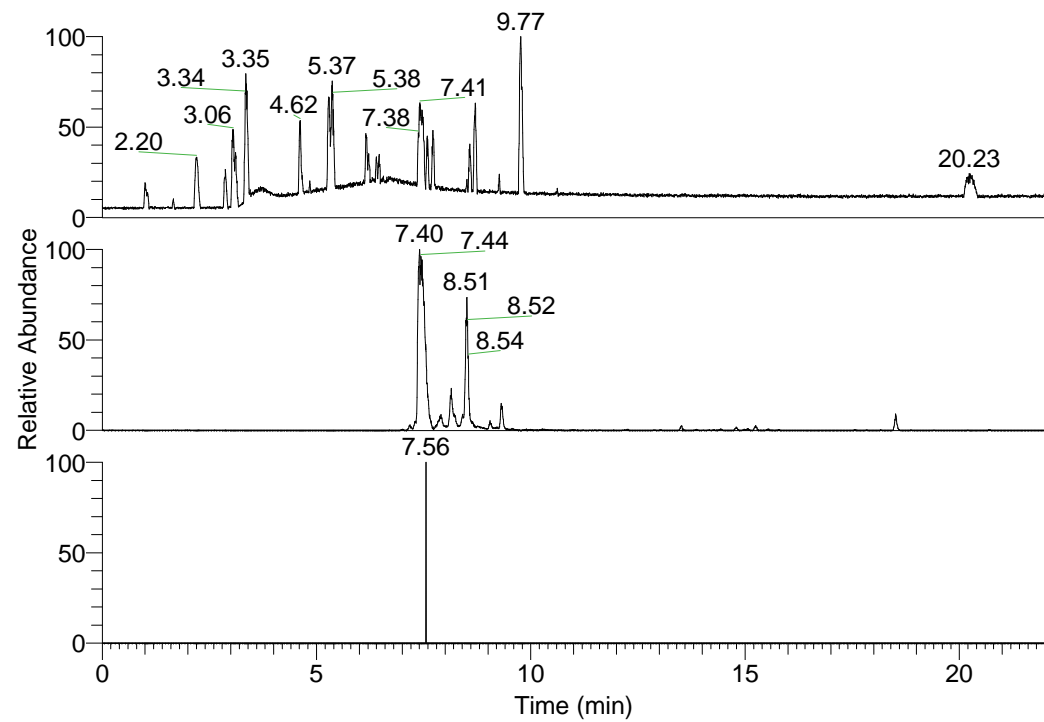


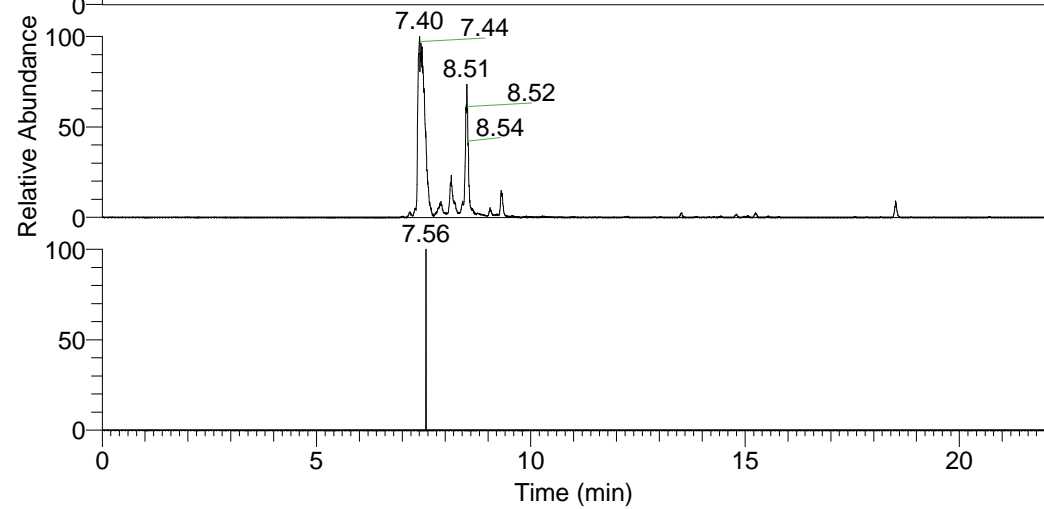
RT: 0.00 - 22.01



NL: 1.37E8
Base Peak m/z=
100.00000-1500.00000 F:
FTMS + p ESI Full ms
[100.00-1500.00] MS
Hololenasp_HDX

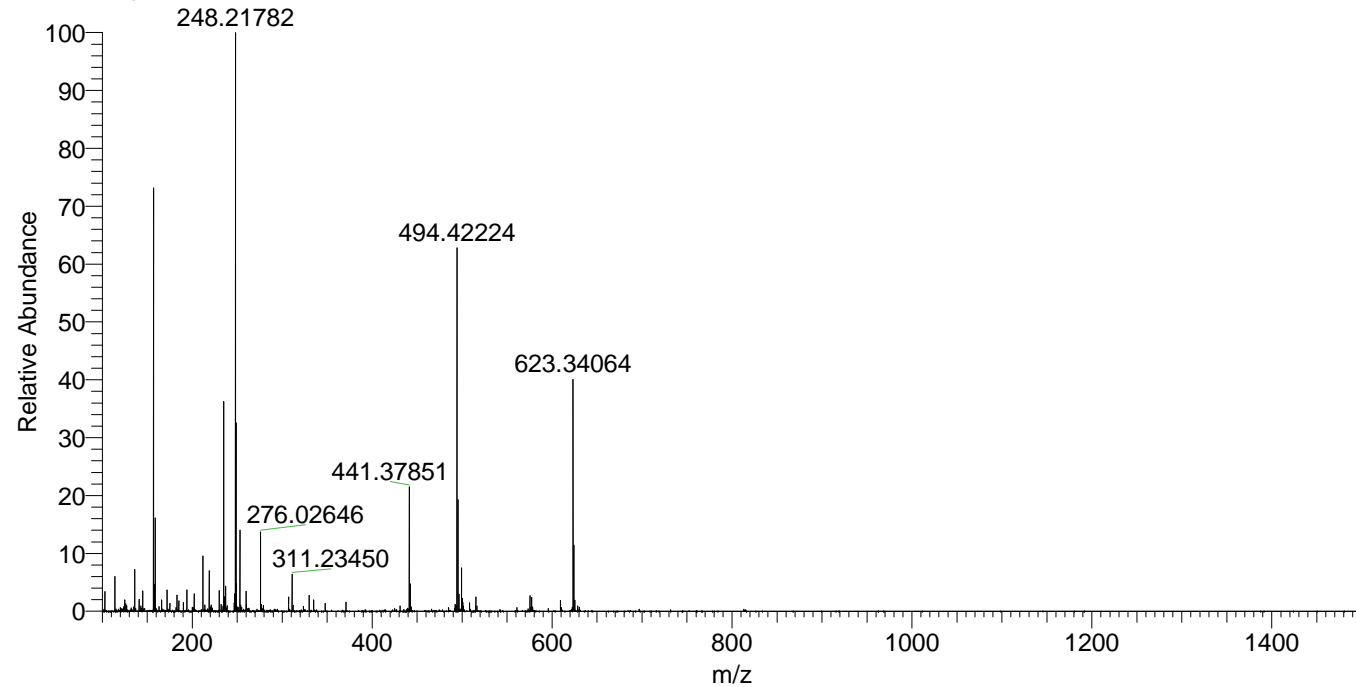
Hololenasp_HDX#1376 RT: 8.51
T: FTMS + p ESI Full ms [100.00-1500.00]
m/z= 311.00000-312.00000

m/z	Intensity	Relative	Delta (ppm)	Composition
311.23450	1825388.0	100.00	-1.18	C ₁₆ H ₁₉ ² H ₆ O ₂ N ₄
			3.80	C ₁₆ H ₁₇ ² H ₇ O ₂ N ₄



NL: 2.48E6
Base Peak m/z=
311.23385-311.23697 F: FTMS
+ p ESI Full ms
[100.00-1500.00] MS
Hololenasp_HDX

Hololenasp_HDX #1375 RT: 8.51 AV: 1 NL: 2.74E7
T: FTMS + p ESI Full ms [100.00-1500.00]



Hololenasp_HDX #1376 RT: 8.51 AV: 1 NL: 1.77E6
T: FTMS + p ESI Full ms [100.00-1500.00]

