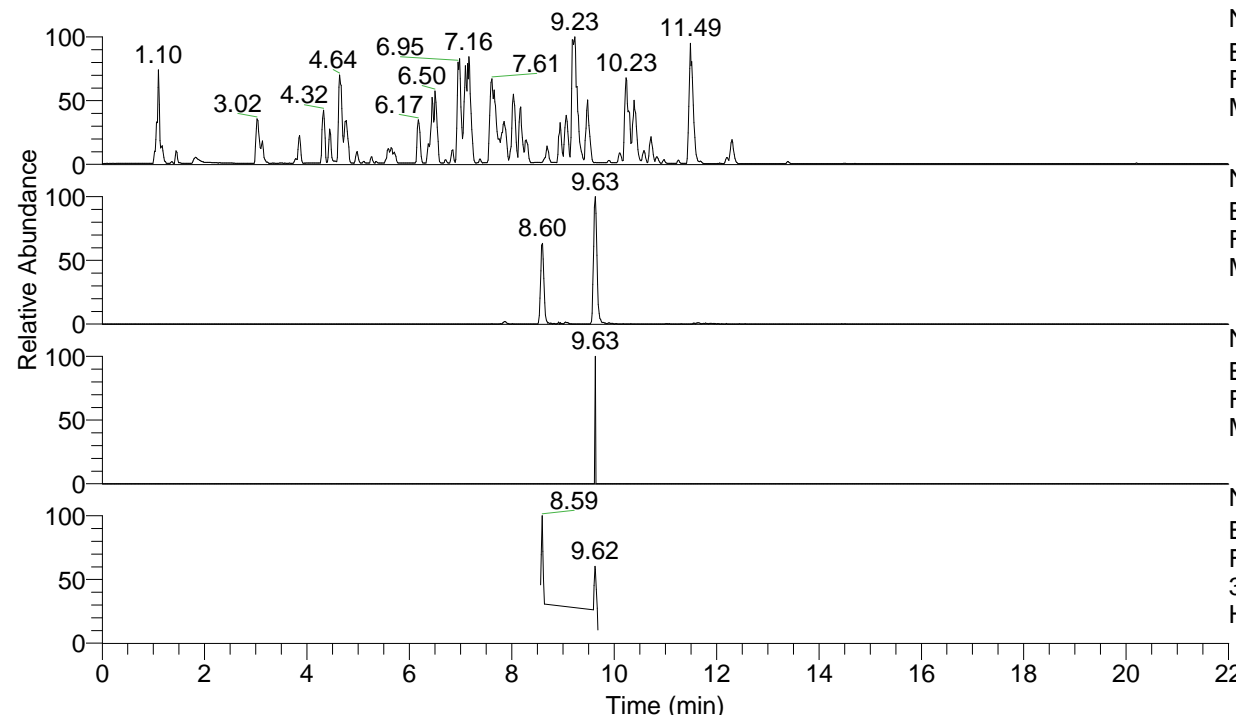


RT: 0.00 - 22.00



NL: 4.98E7
 Base Peak m/z= 100.00000-1500.00000 F:
 FTMS + p ESI Full ms [100.00-1500.00]
 MS Hololenasp

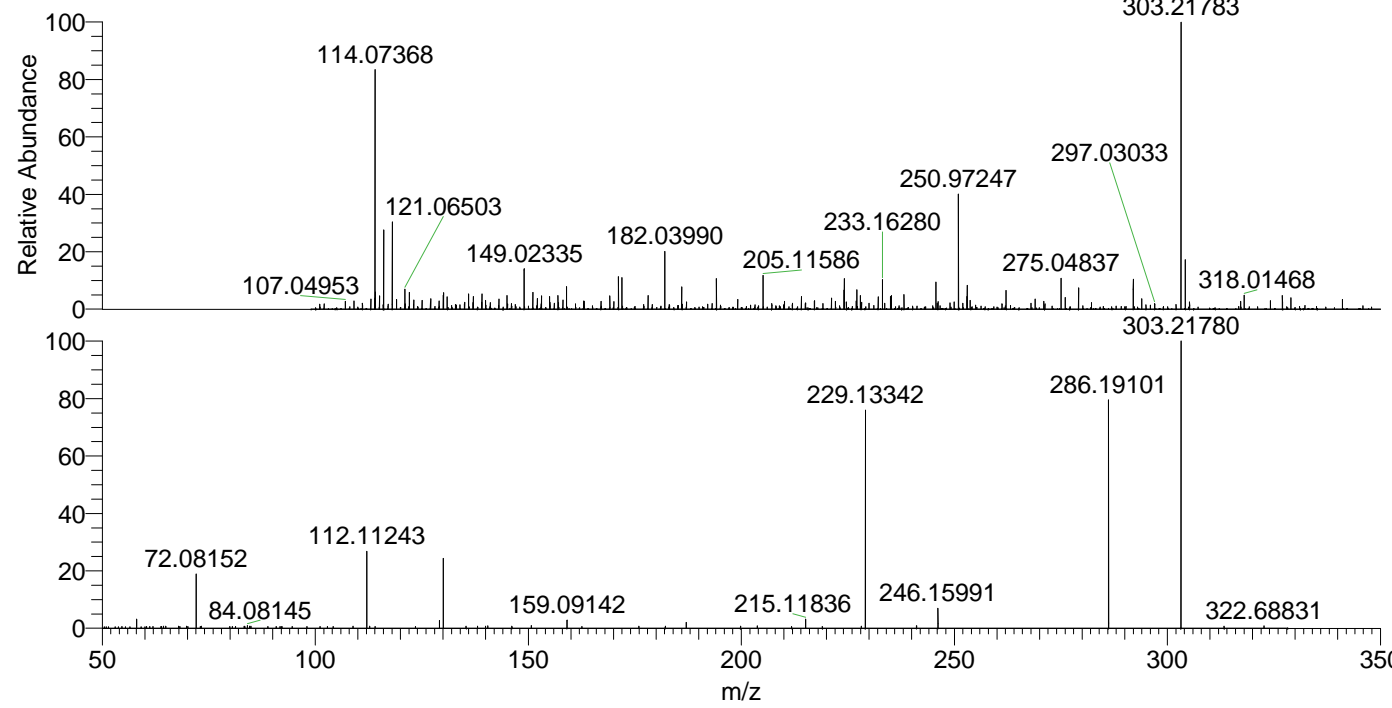
NL: 8.08E5
 Base Peak m/z= 303.21697-303.22001 F:
 FTMS + p ESI Full ms [100.00-1500.00]
 MS Hololenasp

NL: 4.14E3
 Base Peak m/z= 152.11240-152.11392 F:
 FTMS + p ESI Full ms [100.00-1500.00]
 MS Hololenasp

NL: 1.96E5
 Base Peak m/z= 50.00000-1500.00000 F:
 FTMS + p ESI d Full ms2
 303.22@hcd35.00 [50.00-325.00] MS
 Hololenasp

Hololenasp#3845-3873 RT: 9.59-9.67
 F: FTMS + p ESI d Full ms2 303.22 ...
 m/z= 50.00000-1000.00000

m/z	Intensity	Relative
54.64795	497.8	0.63
58.06605	2480.4	3.15
60.37286	483.6	0.61
63.93576	473.8	0.60
64.39413	521.6	0.66
64.93366	528.0	0.67
67.93316	579.2	0.74
69.78376	573.3	0.73
72.08152	14858.7	18.89
73.23855	554.2	0.70
79.90833	504.7	0.64
80.51454	504.2	0.64
83.28990	525.5	0.67
83.50191	497.9	0.63
84.08145	725.7	0.92
84.62077	555.1	0.71
84.89050	551.9	0.70
88.85774	476.0	0.61
90.83625	475.6	0.60
91.75311	478.3	0.61
94.61546	488.2	0.62
101.12750	500.3	0.64
102.85639	492.7	0.63
104.20716	490.2	0.62
108.83864	570.4	0.73
112.11243	20643.0	26.25
112.76159	547.1	0.70
114.04080	519.8	0.66
129.13878	2180.9	2.77
130.06512	19060.8	24.23
135.35909	570.8	0.73
135.41902	487.8	0.62
138.07459	551.9	0.70
139.98810	543.2	0.69
140.48325	620.2	0.79
146.16577	551.6	0.70
150.70442	700.6	0.89
159.09142	2197.7	2.79
162.57369	501.9	0.64
175.93532	556.6	0.71
182.15946	541.1	0.69
187.08698	1561.0	1.98
199.82411	536.2	0.68
203.75590	614.7	0.78
211.81829	488.1	0.62
215.11836	2470.4	3.14
219.03734	519.0	0.66
228.16525	581.6	0.74
229.13342	59129.7	75.18
241.13536	690.8	0.88
246.15991	5445.9	6.92
286.19101	60818.8	77.33
303.21780	78652.1	100.00
313.31868	584.8	0.74
322.68831	659.5	0.84



NL: 8.06E5
 Hololenasp#3859 RT:
 9.63 AV: 1 T: FTMS + p
 ESI Full lock ms
 [100.00-1500.00]

NL: 7.64E4
 Hololenasp#3844-3874
 RT: 9.59-9.67 AV: 6 F:
 FTMS + p ESI d Full ms2
 303.22@hcd35.00
 [50.00-325.00]