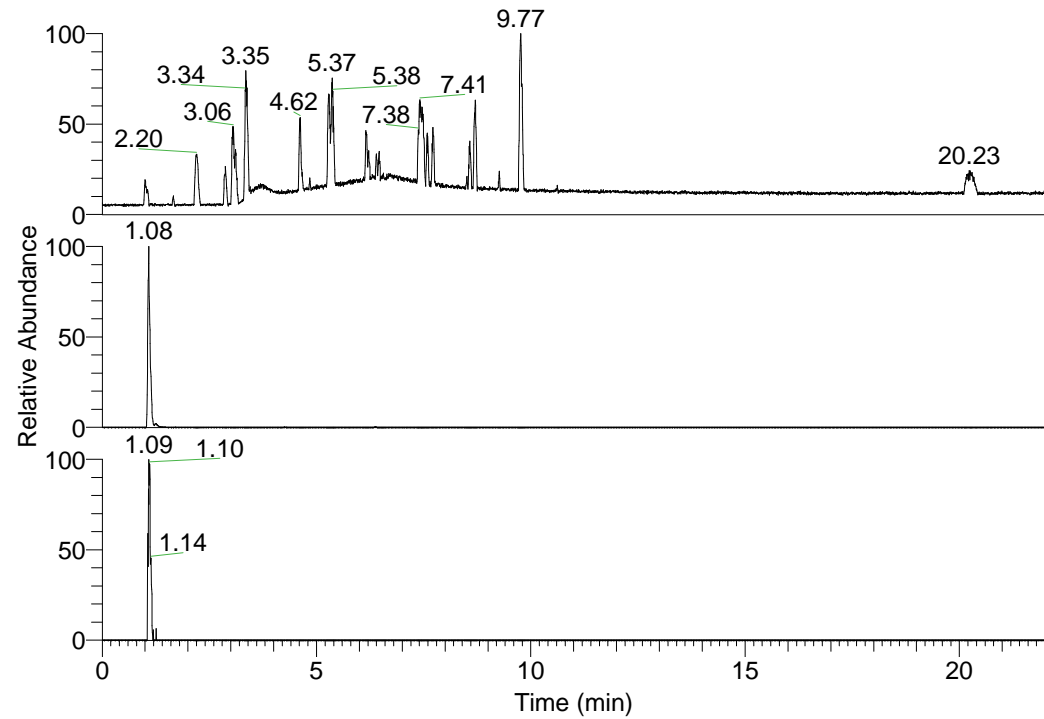


RT: 0.00 - 22.01



NL: 1.37E8
 Base Peak m/z=
 100.00000-1500.00000 F:
 FTMS + p ESI Full ms
 [100.00-1500.00] MS
 Hololenasp_HDX

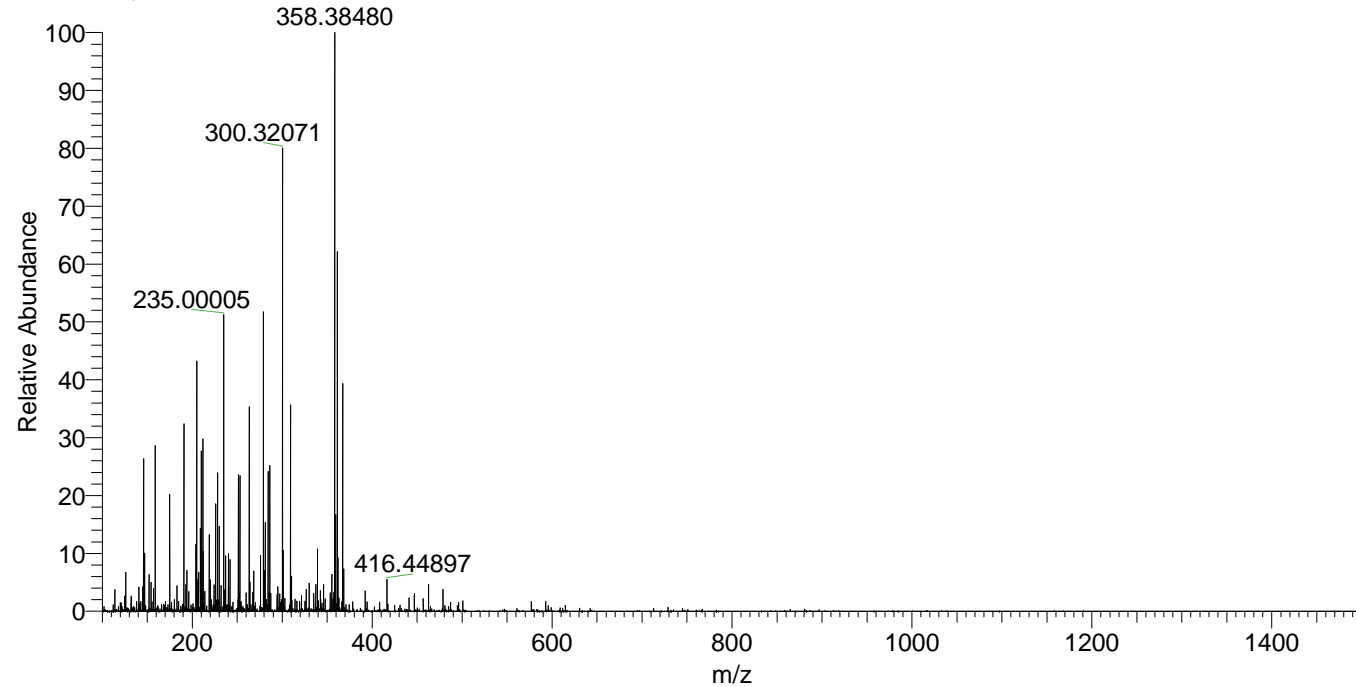
Hololenasp_HDX#161 RT: 1.08
 T: FTMS + p ESI Full ms [100.00-1500.00]
 m/z= 309.00000-310.00000

| m/z | Intensity | Relative | Delta (ppm) | Composition |
|-----------|-----------|----------|-------------|---|
| 309.33511 | 4479151.5 | 100.00 | -0.84 | C ₁₅ H ₂₉ ² H ₇ ON ₅ |
| | | | 4.16 | C ₁₅ H ₂₇ ² H ₈ ON ₅ |

NL: 5.36E6
 Base Peak m/z=
 309.33437-309.33747 F: FTMS
 + p ESI Full ms
 [100.00-1500.00] MS
 Hololenasp_HDX

NL: 5.29E4
 Base Peak m/z=
 155.67423-155.67579 F: FTMS
 + p ESI Full ms
 [100.00-1500.00] MS
 Hololenasp_HDX

Hololenasp_HDX #161 RT: 1.08 AV: 1 NL: 1.22E7
 T: FTMS + p ESI Full ms [100.00-1500.00]



Hololenasp_HDX #161 RT: 1.08 AV: 1 NL: 9.77E6
 T: FTMS + p ESI Full ms [100.00-1500.00]

