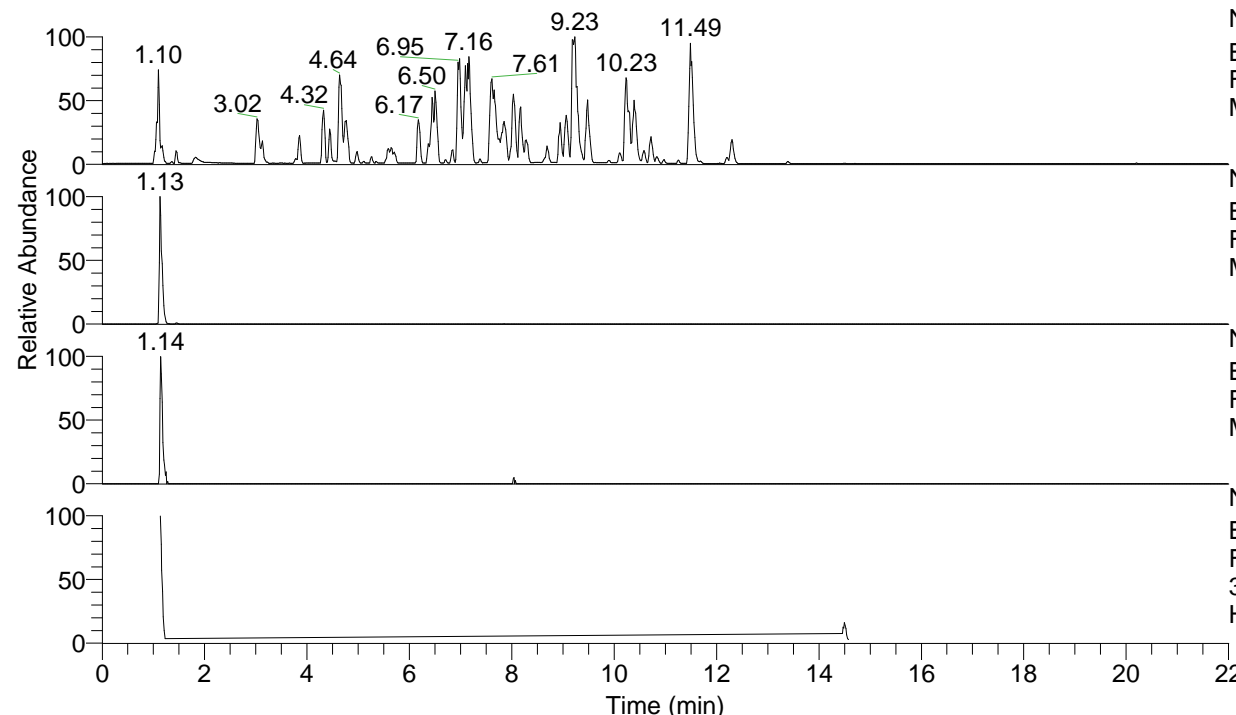


RT: 0.00 - 22.00



NL: 4.98E7
 Base Peak m/z= 100.00000-1500.00000 F:
 FTMS + p ESI Full ms [100.00-1500.00]
 MS Hololenasp

NL: 5.85E6
 Base Peak m/z= 302.29048-302.29350 F:
 FTMS + p ESI Full ms [100.00-1500.00]
 MS Hololenasp

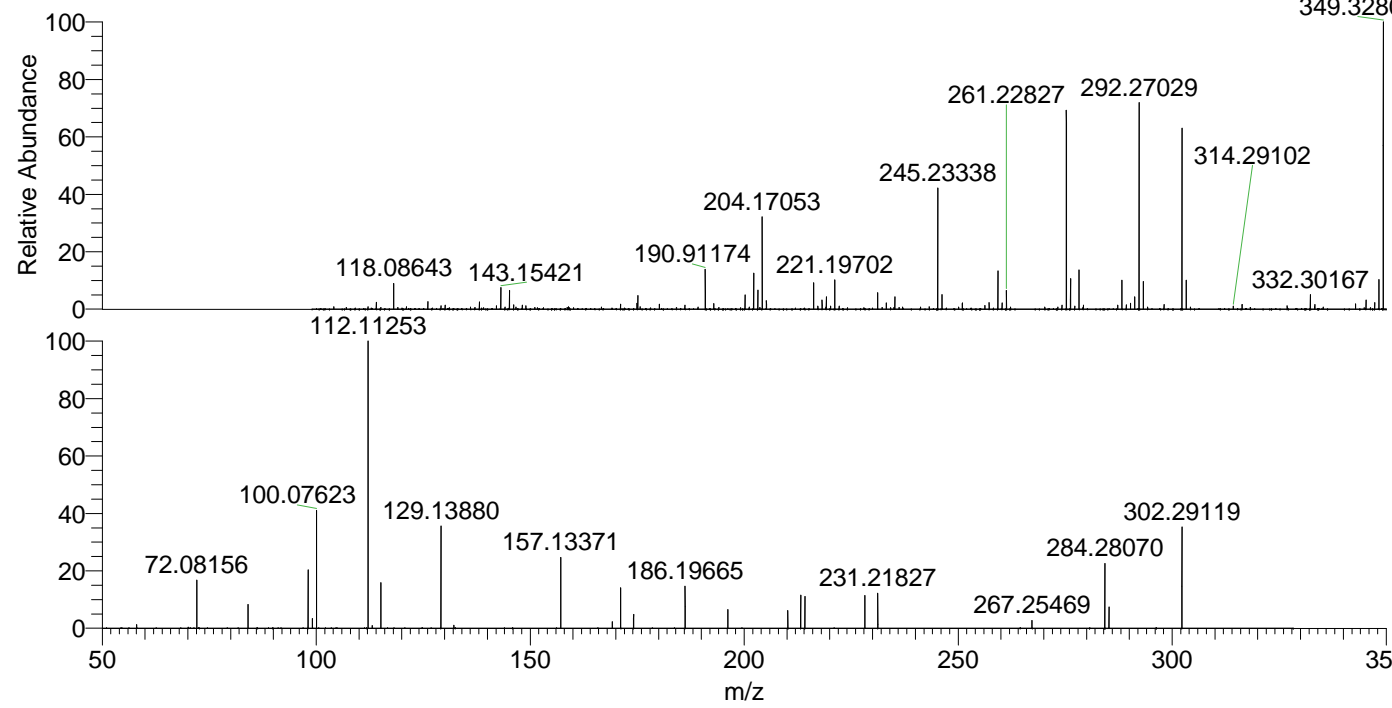
NL: 6.44E4
 Base Peak m/z= 151.64915-151.65067 F:
 FTMS + p ESI Full ms [100.00-1500.00]
 MS Hololenasp

NL: 6.65E5
 Base Peak m/z= 50.00000-1500.00000 F:
 FTMS + p ESI d Full ms2
 302.22@hcd35.00 [50.00-325.00] MS
 Hololenasp

Hololenasp#455-477 RT: 1.14-1.19 AV: 5

F: FTMS + p ESI d Full ms2 302.22 ...

m/z	Intensity	Relative
58.06597	4740.5	1.28
72.08156	63619.2	17.13
84.08143	30997.8	8.35
98.09701	76763.7	20.67
99.09231	13048.4	3.51
100.07623	152473.3	41.06
112.11253	371361.5	100.00
113.10771	3726.8	1.00
115.12336	59207.3	15.94
129.13880	136905.4	36.87
132.14992	3816.2	1.03
157.13371	92577.2	24.93
169.17014	8730.5	2.35
171.14913	52658.0	14.18
174.16016	18135.8	4.88
186.19665	54303.6	14.62
196.18119	24098.9	6.49
210.19671	23156.9	6.24
213.20722	42781.3	11.52
214.19161	41779.0	11.25
228.20713	42295.6	11.39
231.21827	46046.2	12.40
267.25469	10394.4	2.80
284.28070	83449.0	22.47
285.26506	27545.8	7.42
302.29119	131344.0	35.37



349.32809 NL: 9.00E6
 Hololenasp#451 RT: 1.13
 AV: 1 T: FTMS + p ESI
 Full ms [100.00-1500.00]

NL: 3.70E5
 Hololenasp#447-479 RT:
 1.14-1.19 AV: 5 F: FTMS
 + p ESI d Full ms2
 302.22@hcd35.00
 [50.00-325.00]