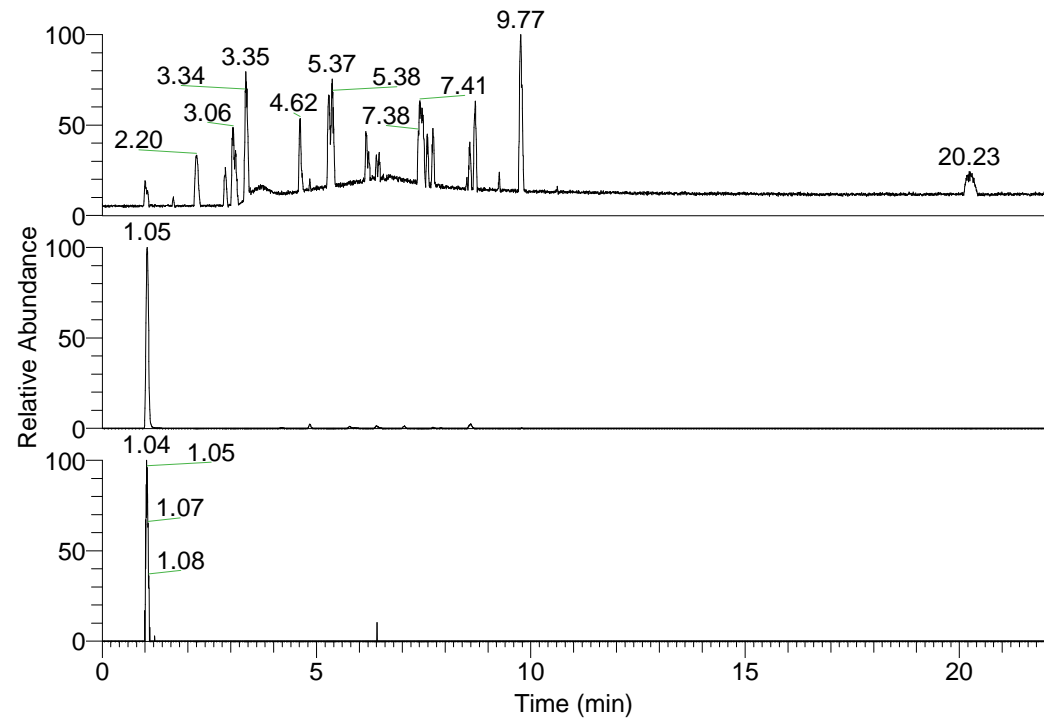


RT: 0.00 - 22.01



NL: 1.37E8
 Base Peak m/z=
 100.00000-1500.00000 F:
 FTMS + p ESI Full ms
 [100.00-1500.00] MS
 Hololenasp_HDX

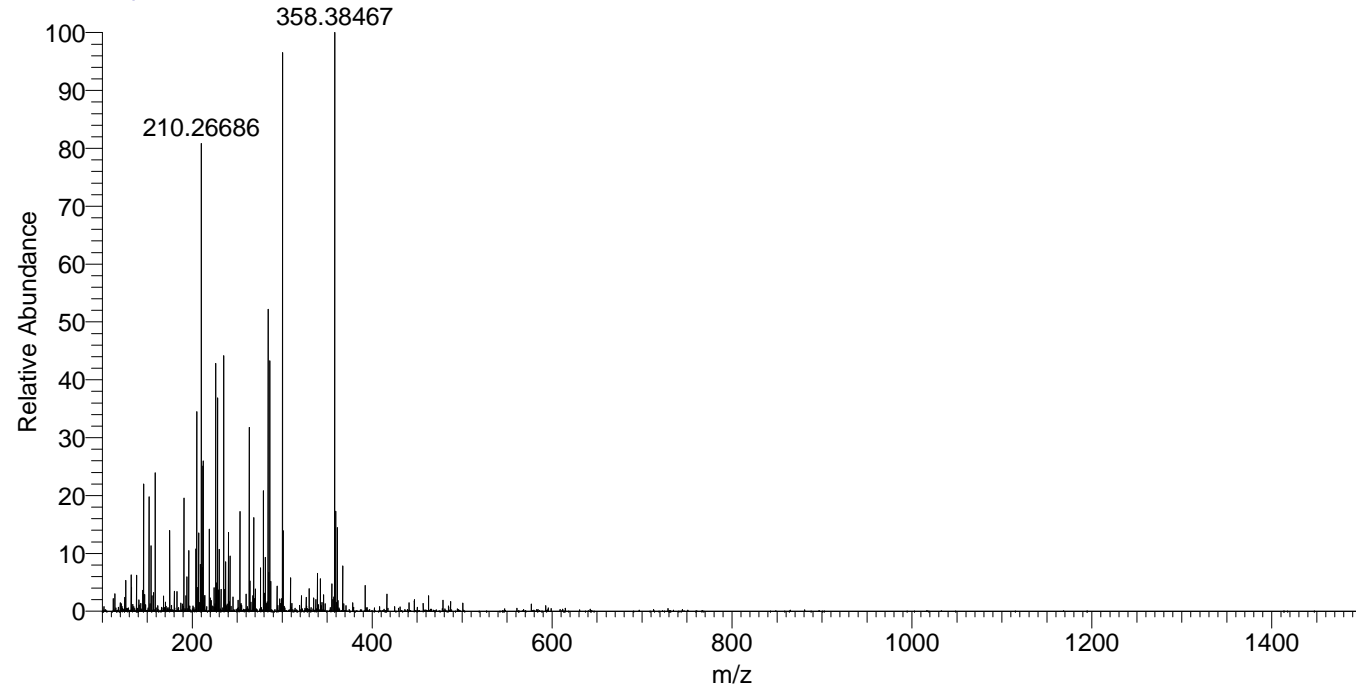
Hololenasp_HDX#156 RT: 1.05
 T: FTMS + p ESI Full ms [100.00-1500.00]
 m/z= 300.00000-301.00000

m/z	Intensity	Relative	Delta (ppm)	Composition
300.32062	16519772.0	100.00	-0.99	C ₁₃ H ₂₆ ² H ₈ O ₂ N ₅
			4.16	C ₁₃ H ₂₄ ² H ₉ O ₂ N ₅

NL: 1.65E7
 Base Peak m/z=
 300.31997-300.32297 F: FTMS
 + p ESI Full ms
 [100.00-1500.00] MS
 Hololenasp_HDX

NL: 9.41E4
 Base Peak m/z=
 151.16702-151.16854 F: FTMS
 + p ESI Full ms
 [100.00-1500.00] MS
 Hololenasp_HDX

Hololenasp_HDX #156 RT: 1.05 AV: 1 NL: 1.61E7
 T: FTMS + p ESI Full ms [100.00-1500.00]



Hololenasp_HDX #156 RT: 1.05 AV: 1 NL: 1.55E7
 T: FTMS + p ESI Full ms [100.00-1500.00]

