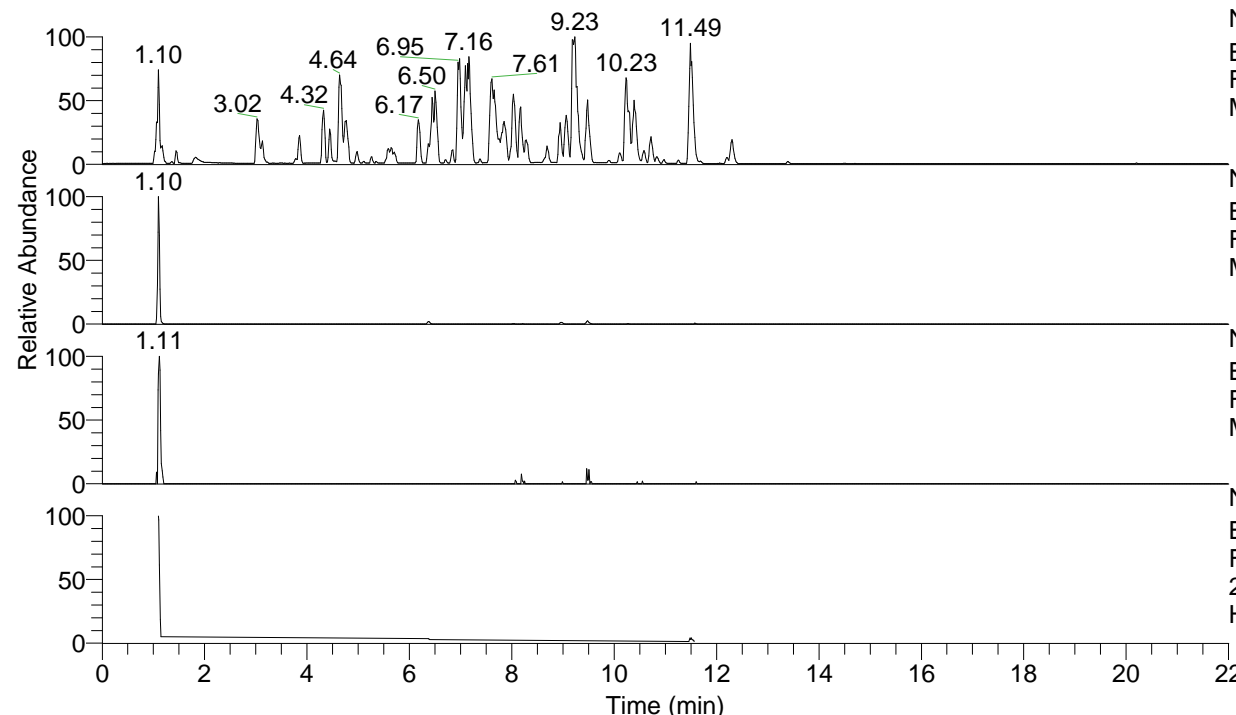


RT: 0.00 - 22.00



NL: 4.98E7
 Base Peak m/z= 100.00000-1500.00000 F:
 FTMS + p ESI Full ms [100.00-1500.00]
 MS Hololenasp

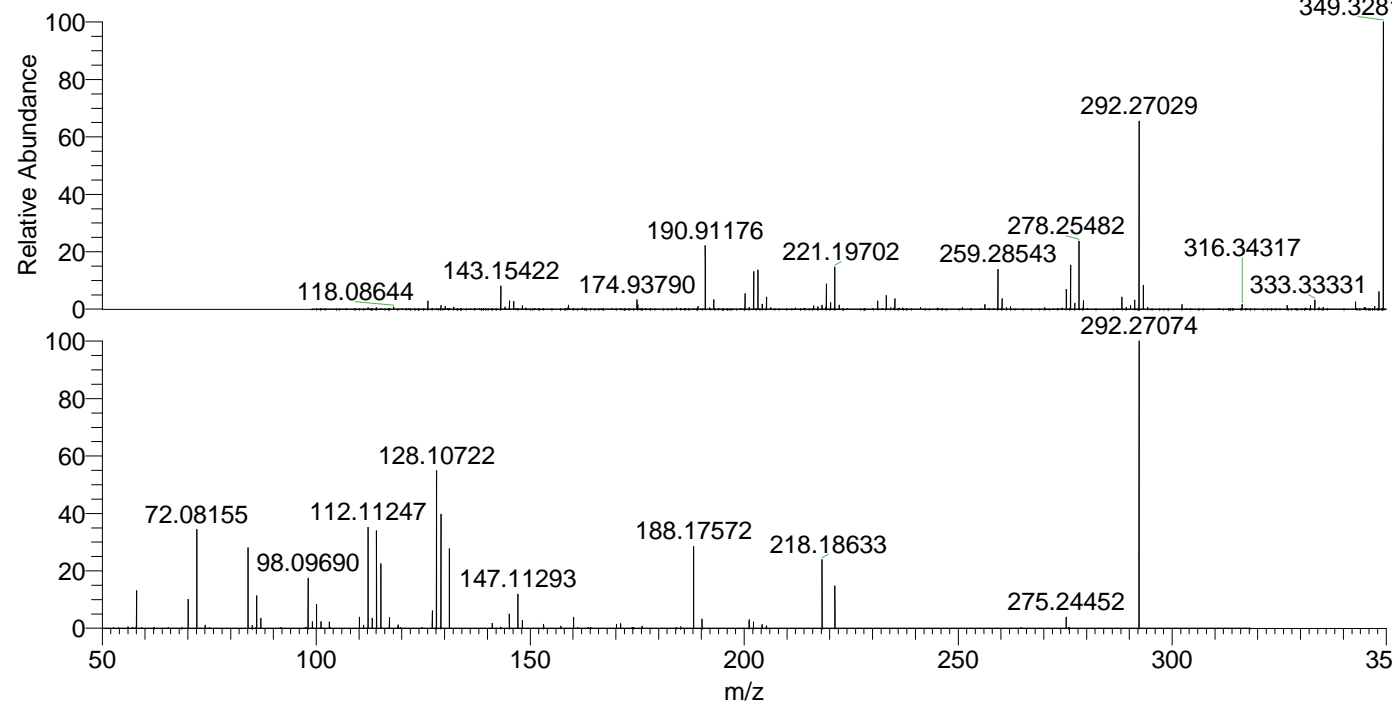
NL: 2.36E7
 Base Peak m/z= 292.26979-292.27271 F:
 FTMS + p ESI Full ms [100.00-1500.00]
 MS Hololenasp

NL: 8.29E4
 Base Peak m/z= 146.63881-146.64027 F:
 FTMS + p ESI Full ms [100.00-1500.00]
 MS Hololenasp

NL: 1.70E6
 Base Peak m/z= 50.00000-1500.00000 F:
 FTMS + p ESI d Full ms2
 292.27@hcd35.00 [50.00-315.00] MS
 Hololenasp

Hololenasp#436-447 RT: 1.10-1.12 AV: 3
 F: FTMS + p ESI d Full ms2 292.27@h ...
 m/z= 50.00000-1000.00000

m/z	Intensity	Relative
58.06598	182438.8	12.87
70.06594	140597.0	9.92
72.08155	492178.8	34.71
74.06068	14689.1	1.04
84.08147	391941.6	27.64
85.07648	12898.8	0.91
86.06064	157726.9	11.12
87.09216	48618.3	3.43
98.09690	246510.7	17.39
99.09207	32405.3	2.29
100.07624	116932.5	8.25
101.10789	32091.1	2.26
103.08695	29597.6	2.09
110.09688	54003.0	3.81
111.09217	15460.1	1.09
112.11247	506418.0	35.72
113.10762	50105.8	3.53
114.09164	474640.9	33.48
115.12334	324563.6	22.89
117.10271	51855.0	3.66
119.11809	16630.3	1.17
127.12324	86652.6	6.11
128.10722	773212.3	54.54
128.11671	13240.1	0.93
129.13876	559314.3	39.45
131.11805	389937.2	27.50
141.13867	23837.9	1.68
145.13365	72196.9	5.09
147.11293	167772.8	11.83
147.13674	85075.1	6.00
148.14464	37514.5	2.65
153.13838	20303.5	1.43
157.13323	9827.2	0.69
160.14444	54098.4	3.82
170.16514	20177.7	1.42
171.14943	22841.9	1.61
176.13954	10138.3	0.72
188.17572	409521.8	28.88
190.15487	45098.1	3.18
201.15976	40682.9	2.87
202.19135	30611.5	2.16
204.17111	18442.4	1.30
205.20227	11810.6	0.83
218.18633	335481.1	23.66
221.19734	212084.5	14.96
275.24452	54485.1	3.84
292.27074	1417777.4	100.00



349.32813 NL: 3.58E7
 Hololenasp#439 RT: 1.10
 AV: 1 T: FTMS + p ESI
 Full ms [100.00-1500.00]

NL: 1.40E6
 Hololenasp#434-452 RT:
 1.10-1.12 AV: 3 F: FTMS
 + p ESI d Full ms2
 292.27@hcd35.00
 [50.00-315.00]