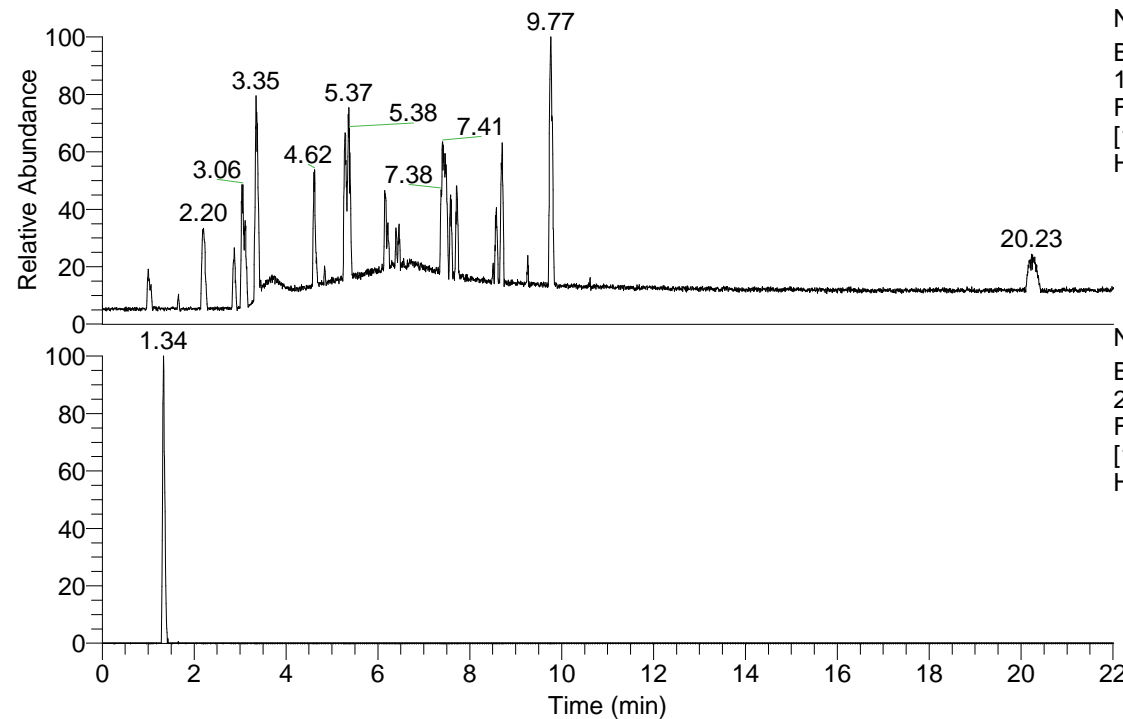


RT: 0.00 - 22.01



NL: 1.37E8
 Base Peak m/z=
 100.00000-1500.00000
 F: FTMS + p ESI Full ms
 [100.00-1500.00] MS
 Hololenasp_HDX

Hololenasp_HDX#201 RT: 1.34

T: FTMS + p ESI Full ms [100.00-1500.00]

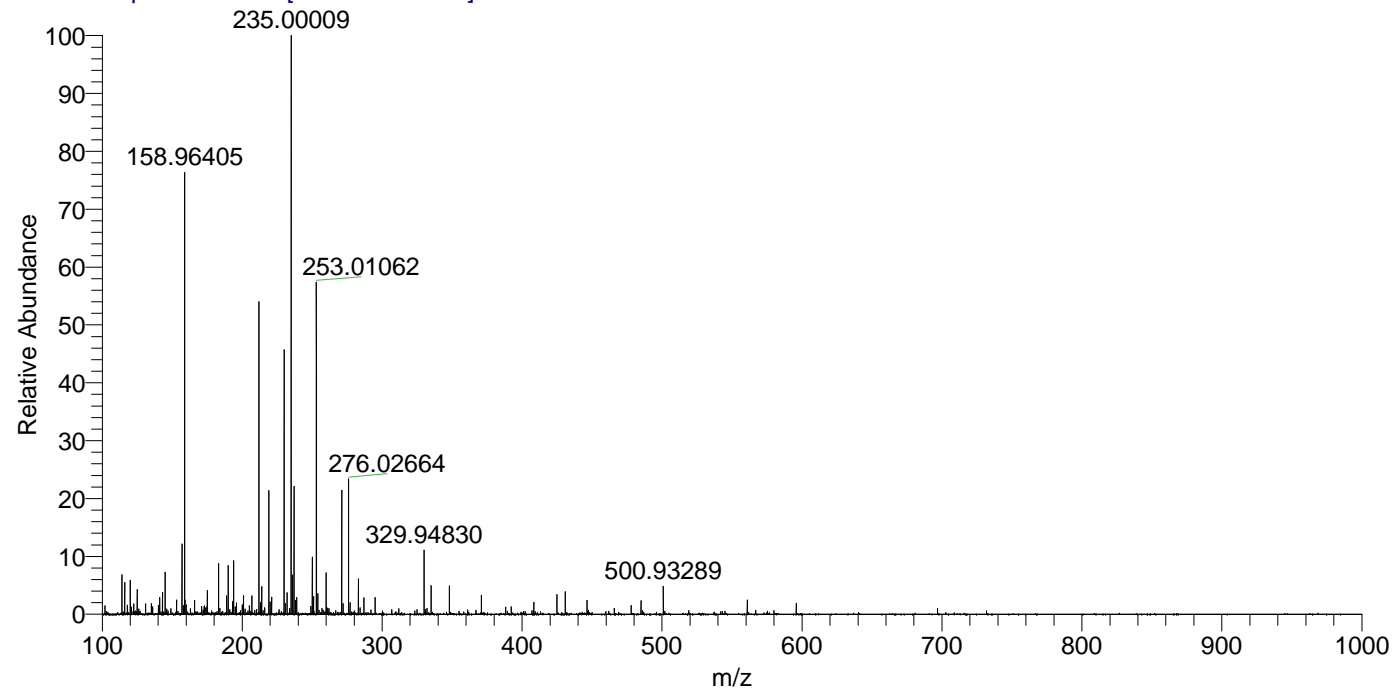
m/z= 250.00000-251.00000

m/z	Intensity	Relative	Delta (ppm)	Composition
250.13037	725703.8	100.00	-0.35	C ₉ H ₈ ² H ₆ O ₅ N ₃

NL: 7.26E5
 Base Peak m/z=
 250.12976-250.13226 F:
 FTMS + p ESI Full ms
 [100.00-1500.00] MS
 Hololenasp_HDX

Hololenasp_HDX #201 RT: 1.34 AV: 1 NL: 7.32E6

T: FTMS + p ESI Full ms [100.00-1500.00]



Hololenasp_HDX #201 RT: 1.34 AV: 1 NL: 4.20E6

T: FTMS + p ESI Full ms [100.00-1500.00]

