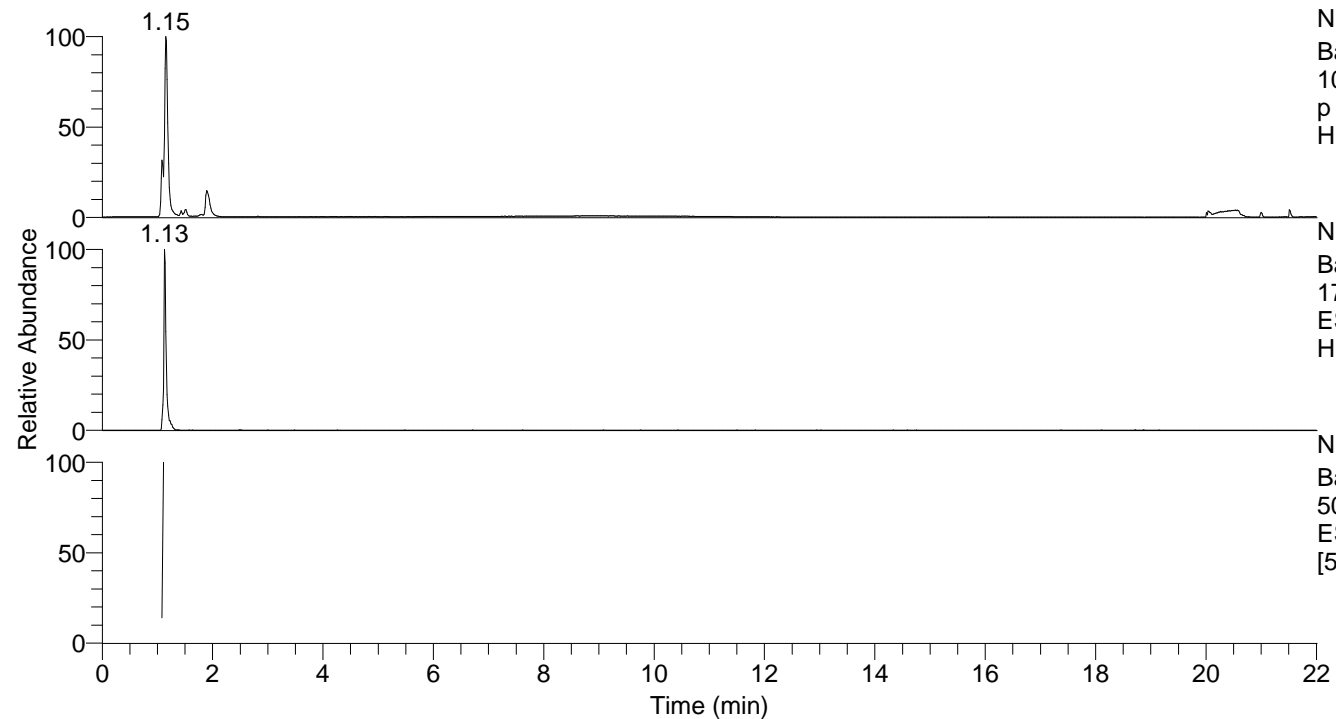


RT: 0.00 - 22.01



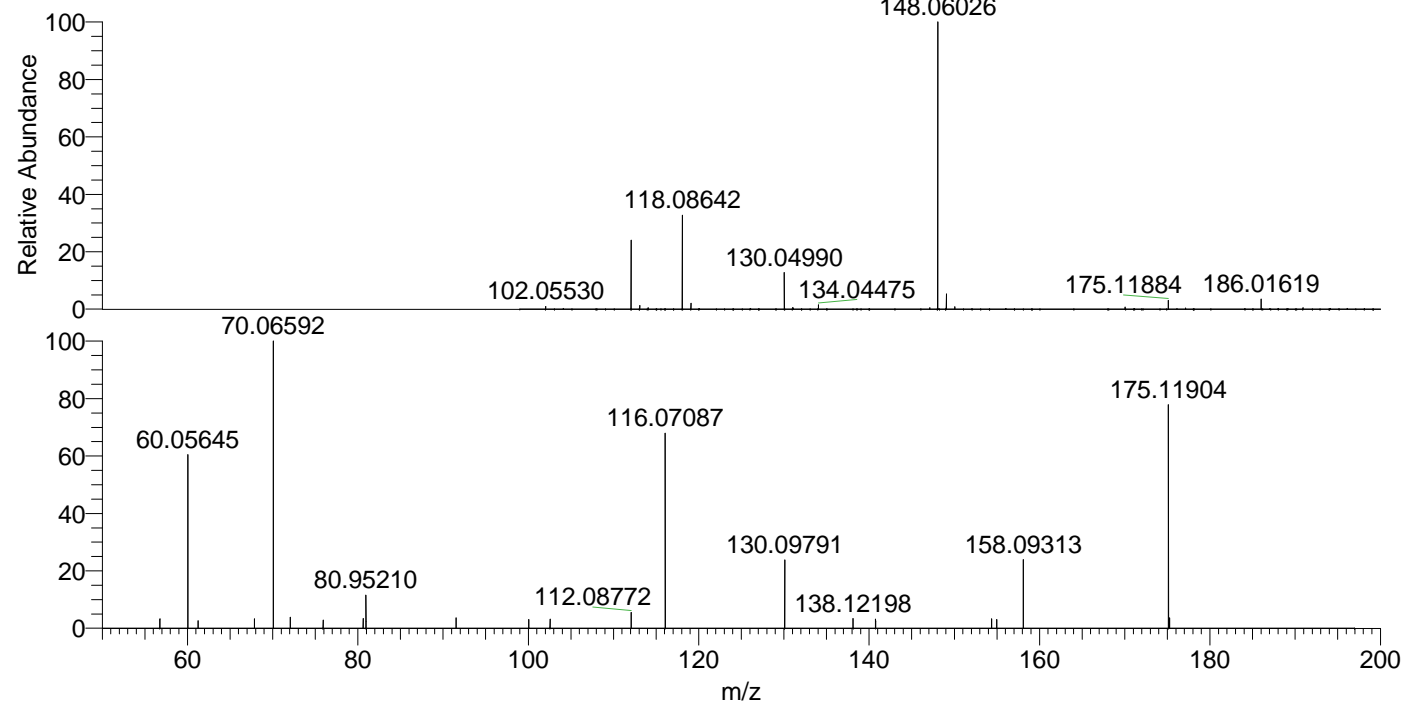
NL: 1.27E8
 Base Peak m/z=
 100.00000-1500.00000 F: FTMS +
 p ESI Full ms [100.00-1500.00] MS
 Hippocosp1

NL: 1.79E6
 Base Peak m/z=
 175.11862-175.12038 F: FTMS + p
 ESI Full ms [100.00-1500.00] MS
 Hippocosp1

NL: 6.48E4
 Base Peak m/z=
 50.00000-1500.00000 F: FTMS + p
 ESI d Full ms2 174.94@hcd35.00
 [50.00-195.00] MS Hippocosp1

Hippocosp1#432-444 RT: 1.08-1.11
 F: FTMS + p ESI d Full ms2 174.94 ...
 m/z= 50.00000-1000.00000

m/z	Intensity	Relative
56.76191	1164.2	3.23
60.05645	22200.9	61.67
60.05897	1317.2	3.66
61.25966	964.7	2.68
67.86411	1210.2	3.36
70.06592	36000.3	100.00
70.06931	1966.1	5.46
72.08175	1424.6	3.96
75.92323	1022.6	2.84
80.62032	1221.1	3.39
80.95210	4116.8	11.44
91.52791	1199.2	3.33
91.53452	1296.5	3.60
100.06991	1080.3	3.00
102.55653	1163.9	3.23
112.08772	1993.9	5.54
116.07087	24337.5	67.60
130.09791	8495.4	23.60
138.12198	1235.9	3.43
140.75741	1173.6	3.26
154.37555	1192.9	3.31
154.97979	1123.6	3.12
158.09313	8588.1	23.86
175.11904	28484.8	79.12
175.26628	1328.4	3.69



NL: 5.64E7
 Hippocosp1#451 RT:
 1.13 AV: 1 T: FTMS + p
 ESI Full ms
 [100.00-1500.00]

NL: 3.57E4
 Hippocosp1#431-452
 RT: 1.08-1.11 AV: 2 F:
 FTMS + p ESI d Full ms2
 174.94@hcd35.00
 [50.00-195.00]