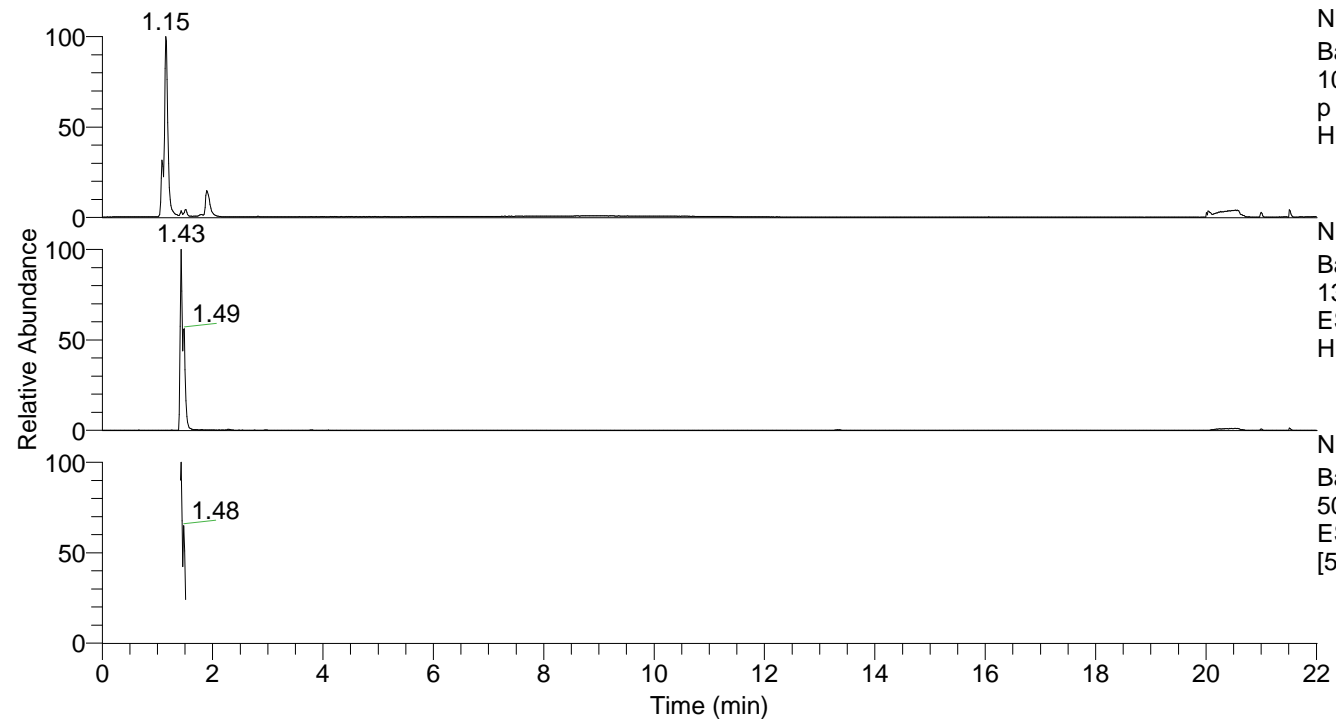


RT: 0.00 - 22.01



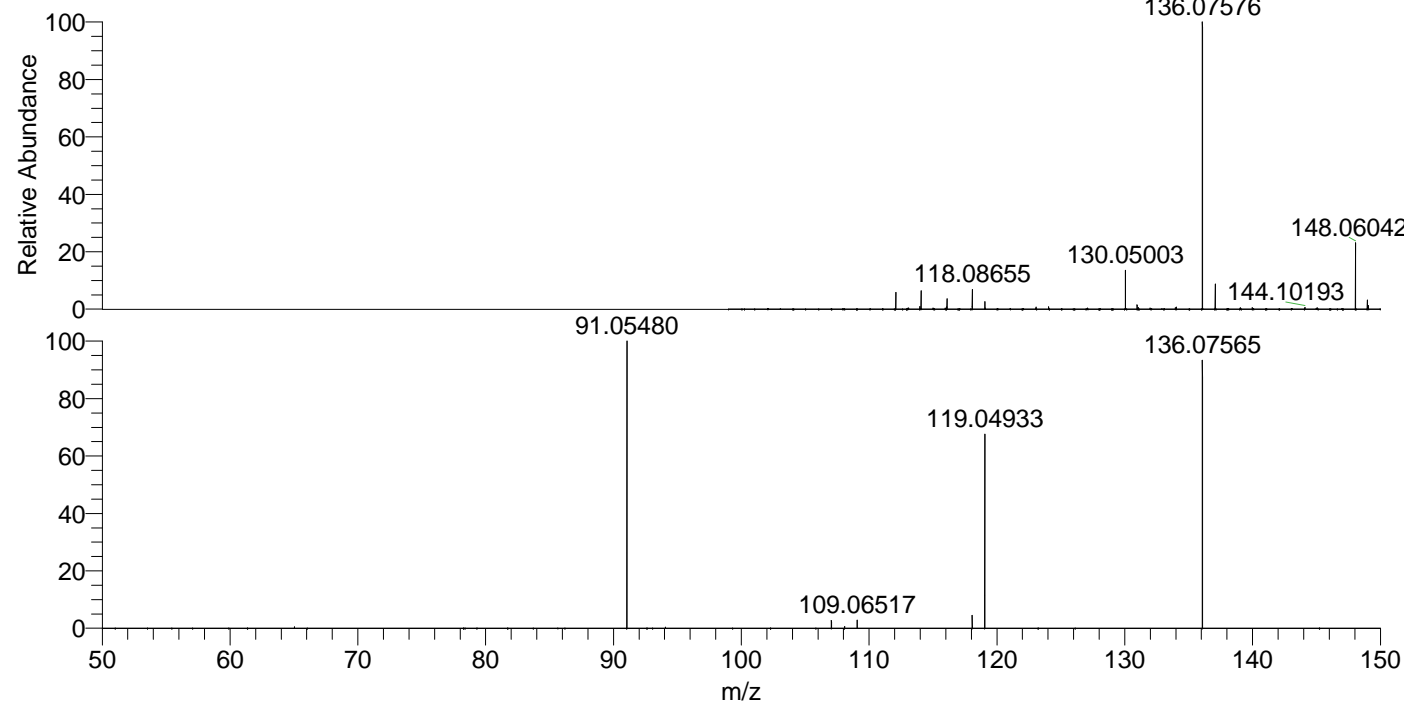
NL: 1.27E8  
 Base Peak m/z=  
 100.00000-1500.00000 F: FTMS +  
 p ESI Full ms [100.00-1500.00] MS  
 Hippocosp1

NL: 4.95E6  
 Base Peak m/z=  
 136.07555-136.07691 F: FTMS + p  
 ESI Full ms [100.00-1500.00] MS  
 Hippocosp1

NL: 1.68E6  
 Base Peak m/z=  
 50.00000-1500.00000 F: FTMS + p  
 ESI d Full ms2 136.08@hcd35.00  
 [50.00-155.00] MS Hippocosp1

Hippocosp1#574-590 RT: 1.42-1.46 AV: 4  
 F: FTMS + p ESI d Full ms2 136.08@h ...  
 m/z= 50.00000-1000.00000

m/z	Intensity	Relative
91.05481	1186528.4	100.00
107.04951	32292.4	2.72
108.08120	6455.8	0.54
109.06514	34236.7	2.89
118.06543	55293.8	4.66
119.04933	801741.1	67.57
136.07565	1125482.1	94.86



NL: 4.67E6  
 Hippocosp1#577 RT:  
 1.43 AV: 1 T: FTMS + p  
 ESI Full ms  
 [100.00-1500.00]

NL: 1.36E6  
 Hippocosp1#568-589  
 RT: 1.42-1.45 AV: 3 F:  
 FTMS + p ESI d Full ms2  
 136.08@hcd35.00  
 [50.00-155.00]