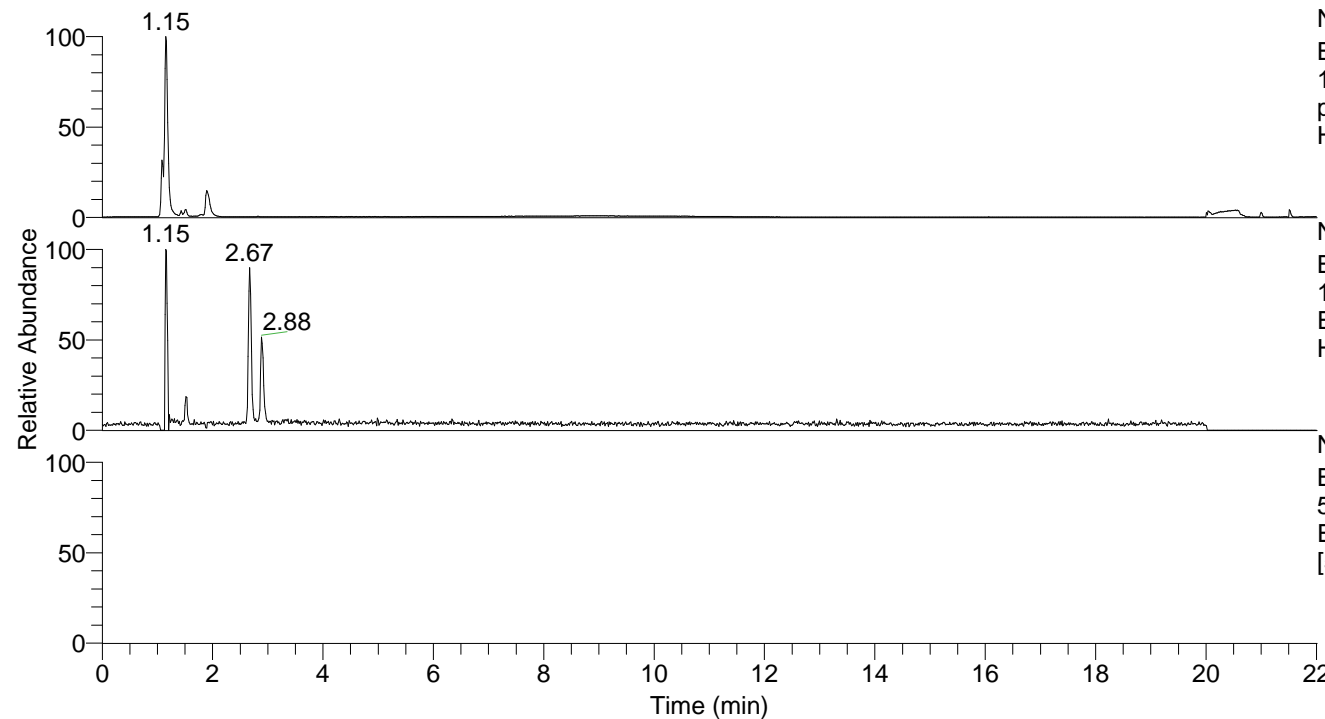


RT: 0.00 - 22.01



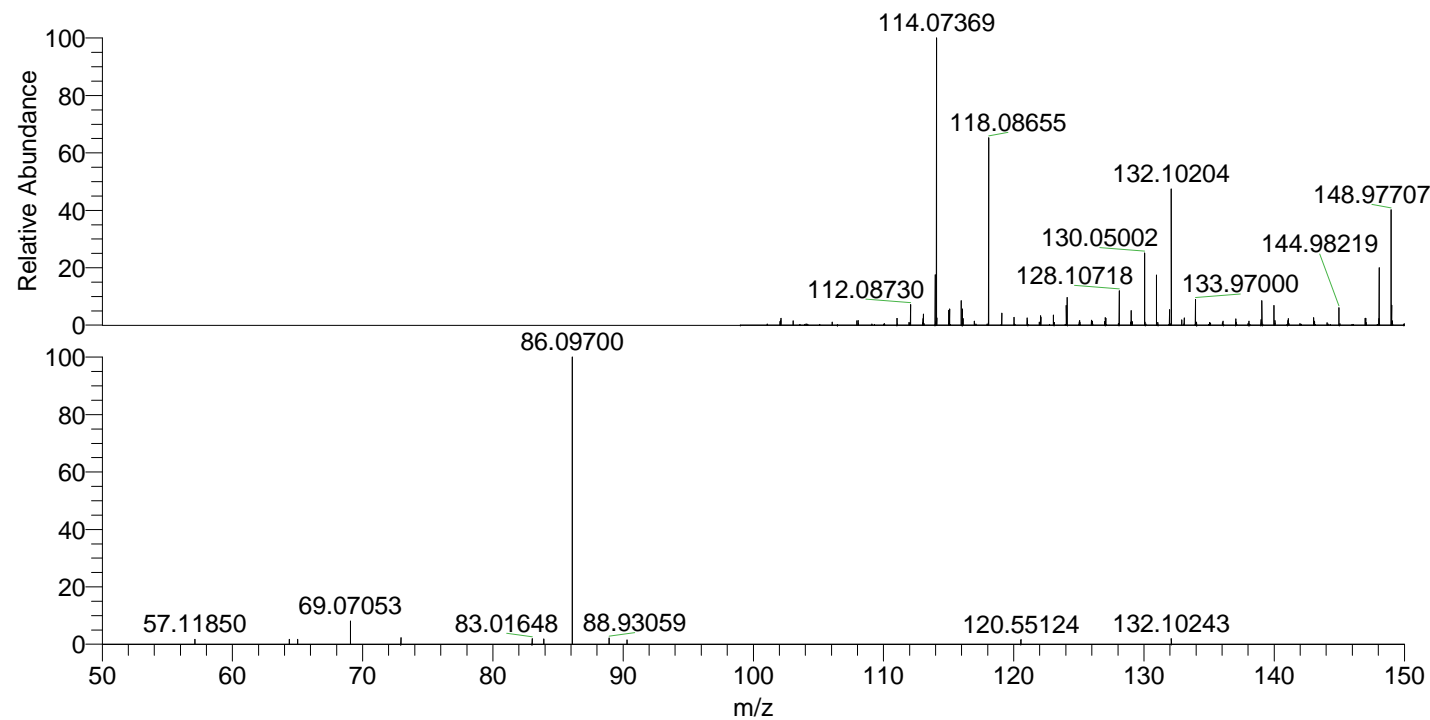
NL: 1.27E8  
 Base Peak m/z=  
 100.00000-1500.00000 F: FTMS +  
 p ESI Full ms [100.00-1500.00] MS  
 Hippocosp1

NL: 1.96E5  
 Base Peak m/z=  
 132.10179-132.10311 F: FTMS + p  
 ESI Full ms [100.00-1500.00] MS  
 Hippocosp1

NL: 1.23E5  
 Base Peak m/z=  
 50.00000-1500.00000 F: FTMS + p  
 ESI d Full ms2 132.10@hcd35.00  
 [50.00-155.00] MS Hippocosp1

Hippocosp1#1080 RT: 2.68  
 F: FTMS + p ESI d Full ms2 132.10 ...  
 m/z= 50.00000-1000.00000

m/z	Intensity	Relative
57.11850	2144.6	1.75
64.37461	2121.8	1.73
65.00315	2172.4	1.77
69.07053	10088.0	8.22
72.93793	2783.4	2.27
83.01648	2402.0	1.96
83.90850	2324.9	1.89
86.09700	122733.2	100.00
88.93059	2705.8	2.20
90.29780	1899.5	1.55
120.55124	2033.8	1.66
132.10243	2454.1	2.00



NL: 3.65E5  
 Hippocosp1#1075  
 RT: 2.67 AV: 1 T:  
 FTMS + p ESI Full ms  
 [100.00-1500.00]

NL: 1.23E5  
 Hippocosp1#1080  
 RT: 2.68 AV: 1 F:  
 FTMS + p ESI d Full  
 ms2 132.10@hcd35.00  
 [50.00-155.00]