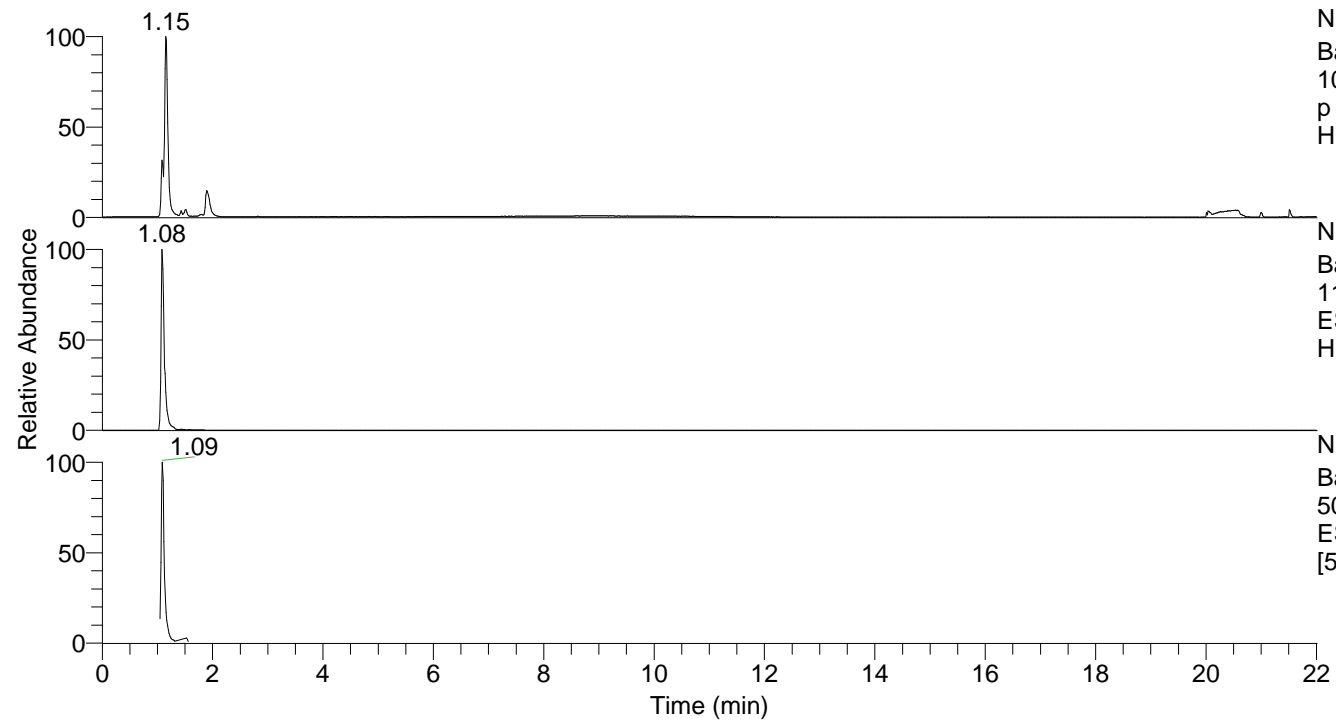


RT: 0.00 - 22.01



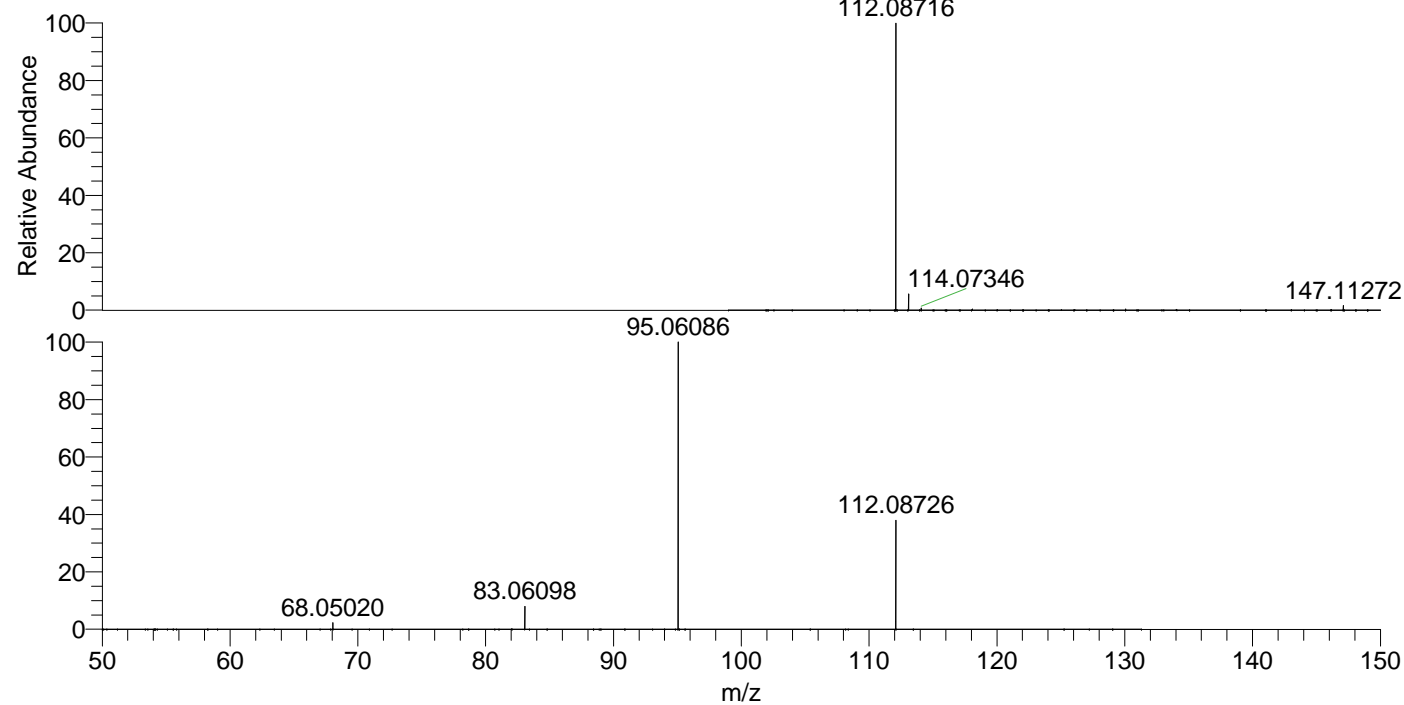
NL: 1.27E8
 Base Peak m/z=
 100.00000-1500.00000 F: FTMS + p
 ESI Full ms [100.00-1500.00] MS
 Hippocosp1

NL: 4.04E7
 Base Peak m/z=
 112.08691-112.08803 F: FTMS + p
 ESI Full ms [100.00-1500.00] MS
 Hippocosp1

NL: 5.60E7
 Base Peak m/z=
 50.00000-1500.00000 F: FTMS + p
 ESI d Full ms2 112.05@hcd35.00
 [50.00-130.00] MS Hippocosp1

Hippocosp1#418-452 RT: 1.05-1.13 AV: 7
 F: FTMS + p ESI d Full ms2 112.05@hc ...
 m/z= 50.00000-1000.00000

m/z	Intensity	Relative
68.05020	744878.7	2.31
83.06098	2533204.0	7.85
95.06086	32282950.0	100.00
112.08726	11975645.0	37.10



NL: 3.96E7
 Hippocosp1#433 RT:
 1.08 AV: 1 T: FTMS + p
 ESI Full ms
 [100.00-1500.00]

NL: 3.14E7
 Hippocosp1#416-459
 RT: 1.05-1.13 AV: 7 F:
 FTMS + p ESI d Full ms2
 112.05@hcd35.00
 [50.00-130.00]