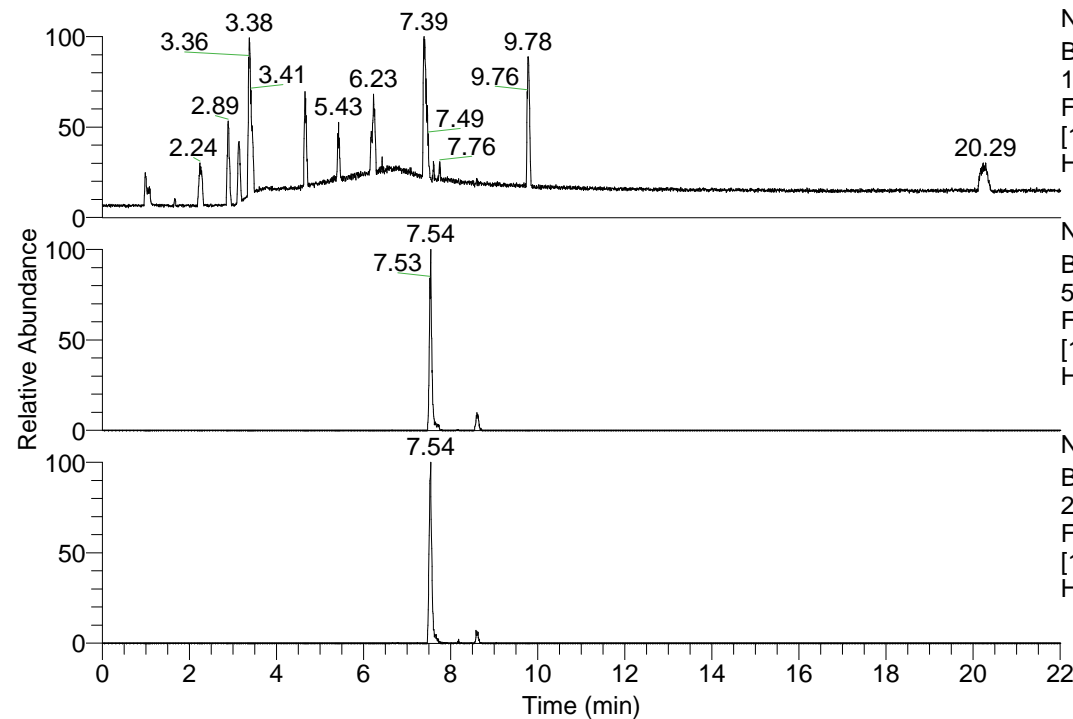


RT: 0.00 - 22.01



NL: 1.13E8
Base Peak m/z=
100.00000-1500.00000 F:
FTMS + p ESI Full ms
[100.00-1500.00] MS
Hcurta_HDX

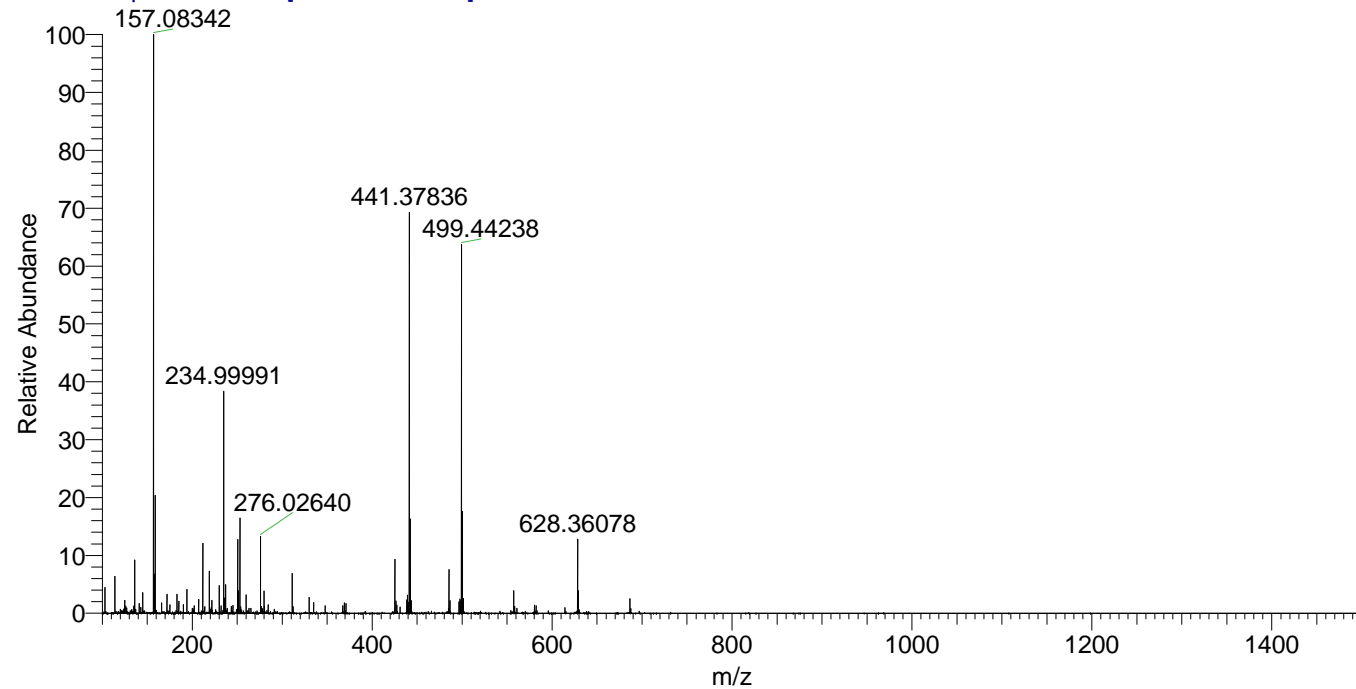
Hcurta_HDX#1216 RT: 7.54
T: FTMS + p ESI Full ms [100.00-1500.00]
m/z= 557.00000-558.00000

m/z	Intensity	Relative	Delta (ppm)	Composition
557.50659	964794.6	100.00	-0.76	C ₂₉ H ₄₅ ² H ₁₀ O ₂ N ₈
			2.01	C ₂₉ H ₄₃ ² H ₁₁ O ₂ N ₈
			-3.54	C ₂₉ H ₄₇ ² H ₉ O ₂ N ₈
			4.79	C ₂₉ H ₄₁ ² H ₁₂ O ₂ N ₈

NL: 1.08E6
Base Peak m/z=
557.50478-557.51036 F:
FTMS + p ESI Full ms
[100.00-1500.00] MS
Hcurta_HDX

NL: 1.05E6
Base Peak m/z=
279.75943-279.76223 F:
FTMS + p ESI Full ms
[100.00-1500.00] MS
Hcurta_HDX

Hcurta_HDX #1216 RT: 7.54 AV: 1 NL: 2.44E7
T: FTMS + p ESI Full ms [100.00-1500.00]



Hcurta_HDX #1216 RT: 7.54 AV: 1 NL: 9.47E5
T: FTMS + p ESI Full ms [100.00-1500.00]

