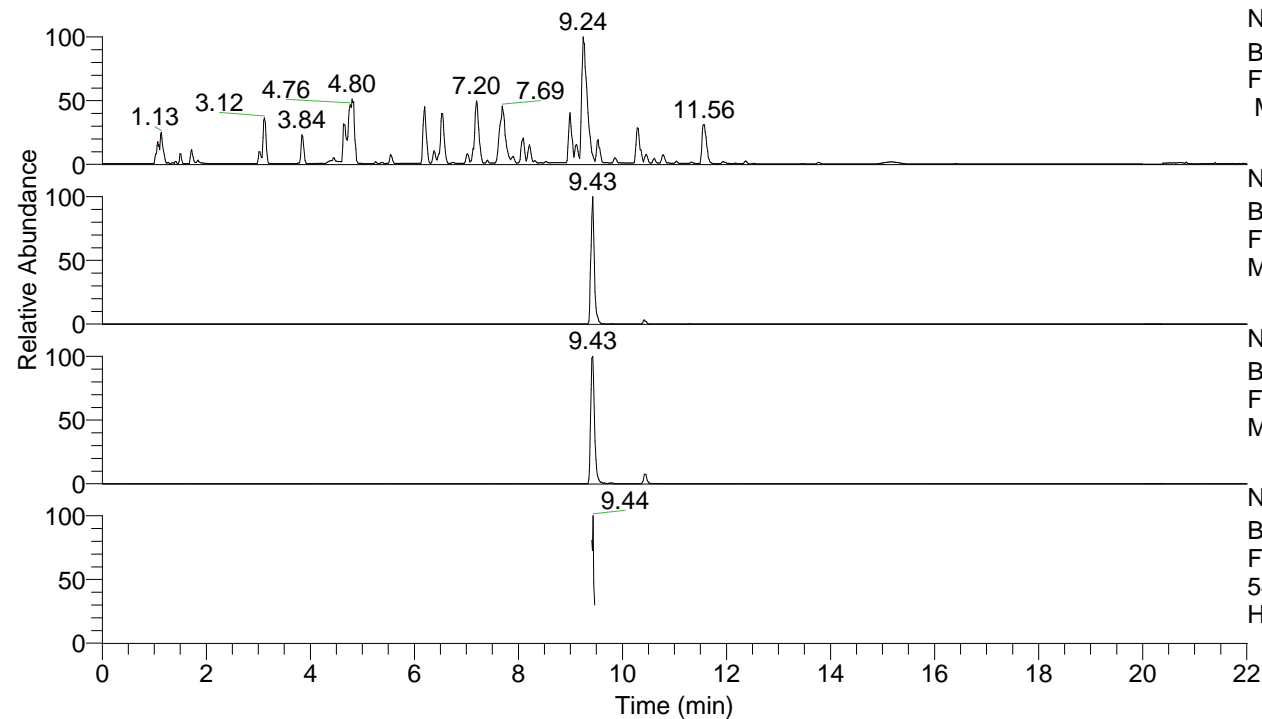


RT: 0.00 - 22.01



NL: 8.52E7  
 Base Peak m/z= 100.00000-1500.00000  
 F: FTMS + p ESI Full ms [100.00-1500.00]  
 MS Hcurta

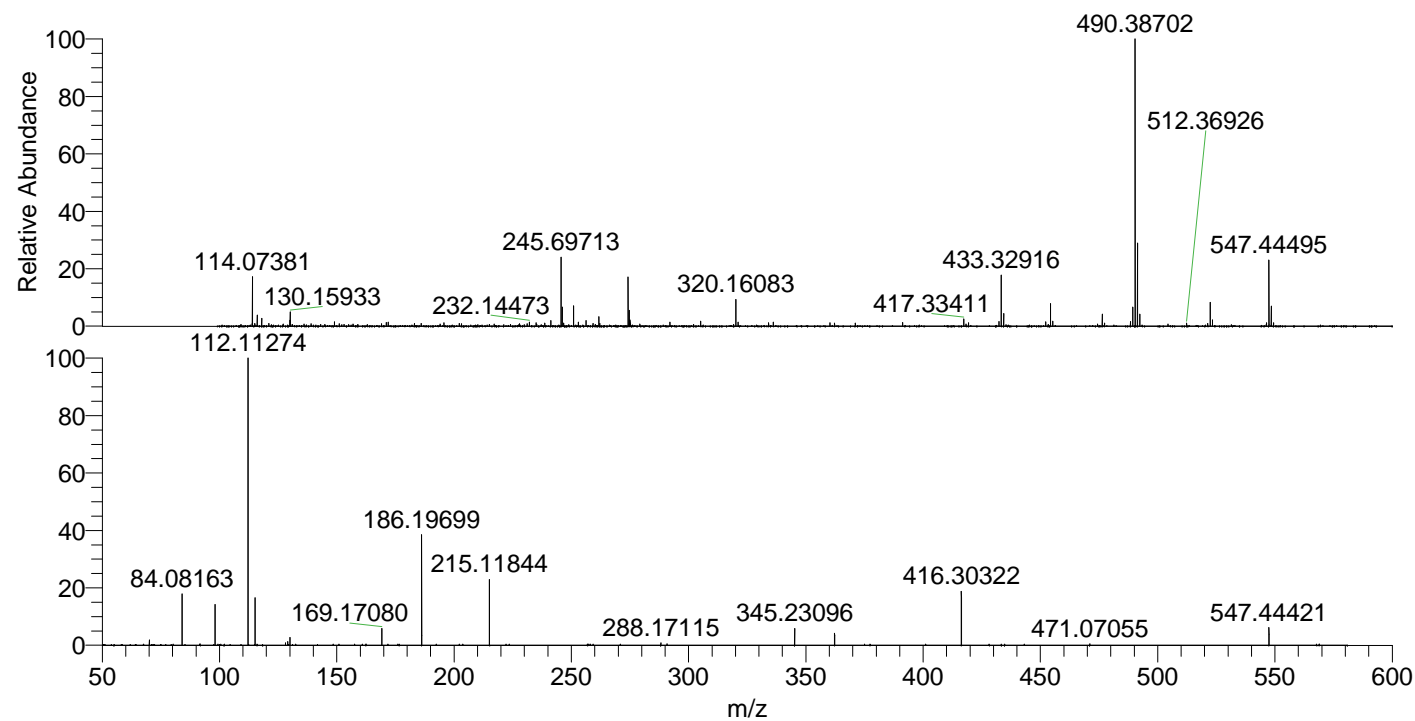
NL: 1.43E6  
 Base Peak m/z= 547.43933-547.45027 F:  
 FTMS + p ESI Full ms [100.00-1500.00]  
 MS Hcurta

NL: 1.07E6  
 Base Peak m/z= 274.22357-274.22905 F:  
 FTMS + p ESI Full ms [100.00-1500.00]  
 MS Hcurta

NL: 4.13E5  
 Base Peak m/z= 50.00000-1500.00000 F:  
 FTMS + p ESI d Full ms2  
 547.44@hcd35.00 [50.00-575.00] MS  
 Hcurta

Hcurta#3780-3801 RT: 9.41-9.46 AV: 5  
 F: FTMS + p ESI d Full ms2 547.44 ...  
 m/z= 50.00000-1000.00000

m/z	Intensity	Relative
70.06599	4765.3	1.85
84.08163	47561.4	18.49
98.09727	36347.6	14.13
112.11274	257222.7	100.00
115.12367	42649.6	16.58
128.10750	2066.7	0.80
129.13934	3369.6	1.31
130.06594	7059.2	2.74
169.17080	15051.0	5.85
186.19699	100624.2	39.12
215.11844	58674.9	22.81
288.17115	2001.0	0.78
345.23096	15438.7	6.00
362.25632	10599.9	4.12
416.30322	48296.4	18.78
471.07055	1409.6	0.55
547.44421	16264.5	6.32



NL: 6.08E6  
 Hcurta#3787 RT: 9.43  
 AV: 1 T: FTMS + p ESI  
 Full lock ms  
 [100.00-1500.00]

NL: 2.56E5  
 Hcurta#3780-3801 RT:  
 9.41-9.46 AV: 5 F: FTMS  
 + p ESI d Full ms2  
 547.44@hcd35.00  
 [50.00-575.00]