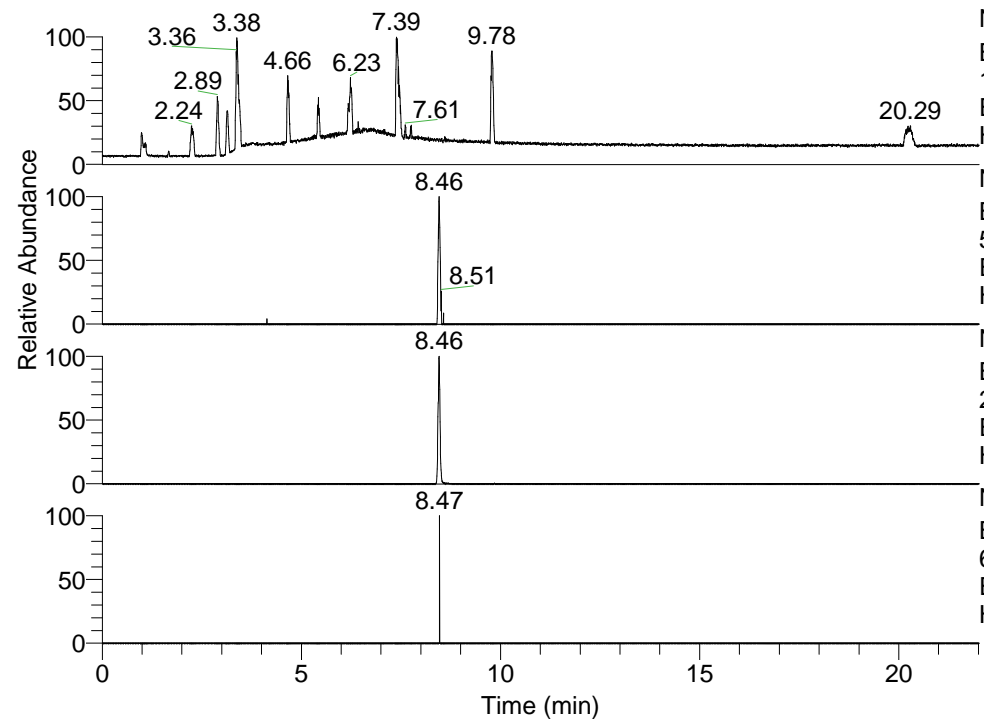


RT: 0.00 - 22.01



NL: 1.13E8
Base Peak m/z=
100.00000-1500.00000 F: FTMS + p
ESI Full ms [100.00-1500.00] MS
Hcurta_HDX

NL: 7.38E4
Base Peak m/z=
552.48445-552.48997 F: FTMS + p
ESI Full ms [100.00-1500.00] MS
Hcurta_HDX

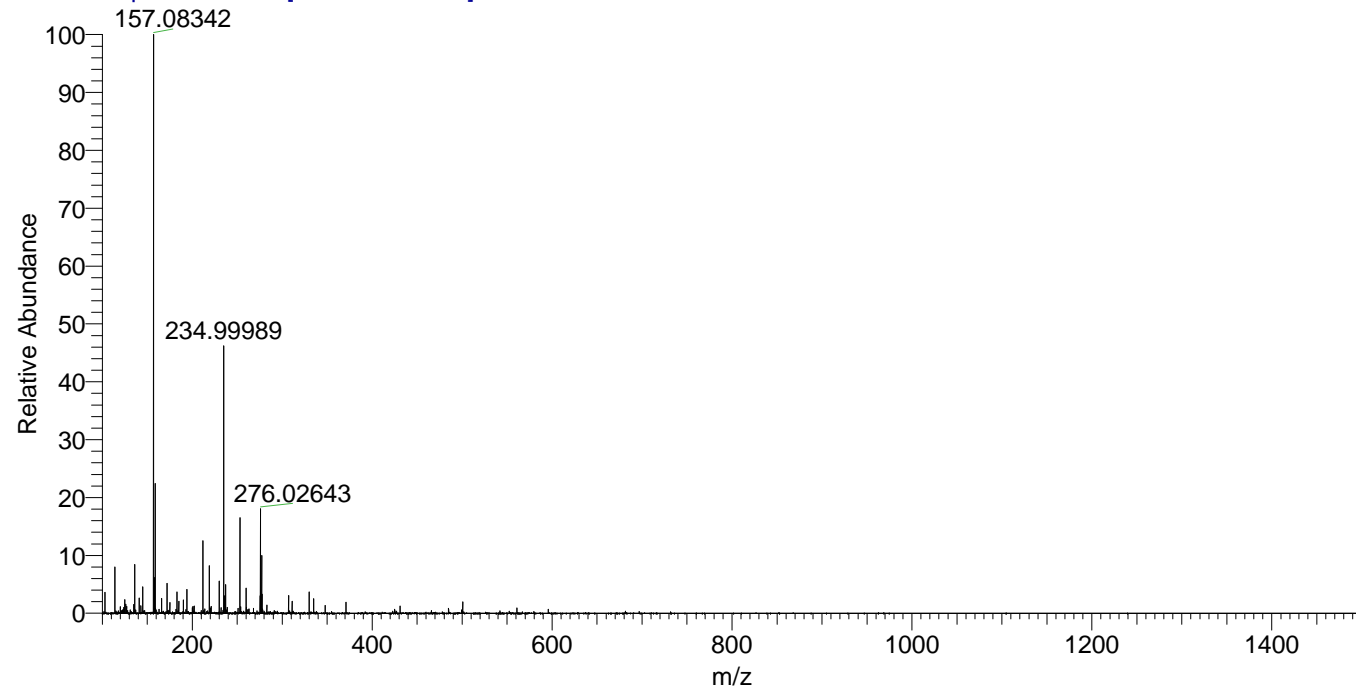
NL: 2.24E6
Base Peak m/z=
277.24927-277.25205 F: FTMS + p
ESI Full ms [100.00-1500.00] MS
Hcurta_HDX

NL: 4.95E3
Base Peak m/z=
667.48301-667.48969 F: FTMS + p
ESI Full ms [100.00-1500.00] MS
Hcurta_HDX

Hcurta_HDX#1368 RT: 8.46
T: FTMS + p ESI Full ms [100.00-1500.00]
m/z= 552.00000-553.00000

m/z	Intensity	Relative	Delta (ppm)	Composition
552.48627	73819.5	100.00	-0.71	C ₃₀ H ₅₀ ² H ₆ O ₂ N ₇
			2.09	C ₃₀ H ₄₈ ² H ₇ O ₂ N ₇
			-3.52	C ₃₀ H ₅₂ ² H ₅ O ₂ N ₇
			4.89	C ₃₀ H ₄₆ ² H ₈ O ₂ N ₇

Hcurta_HDX #1368 RT: 8.46 AV: 1 NL: 2.19E7
T: FTMS + p ESI Full ms [100.00-1500.00]



Hcurta_HDX #1368 RT: 8.46 AV: 1 NL: 1.95E5
T: FTMS + p ESI Full ms [100.00-1500.00]

