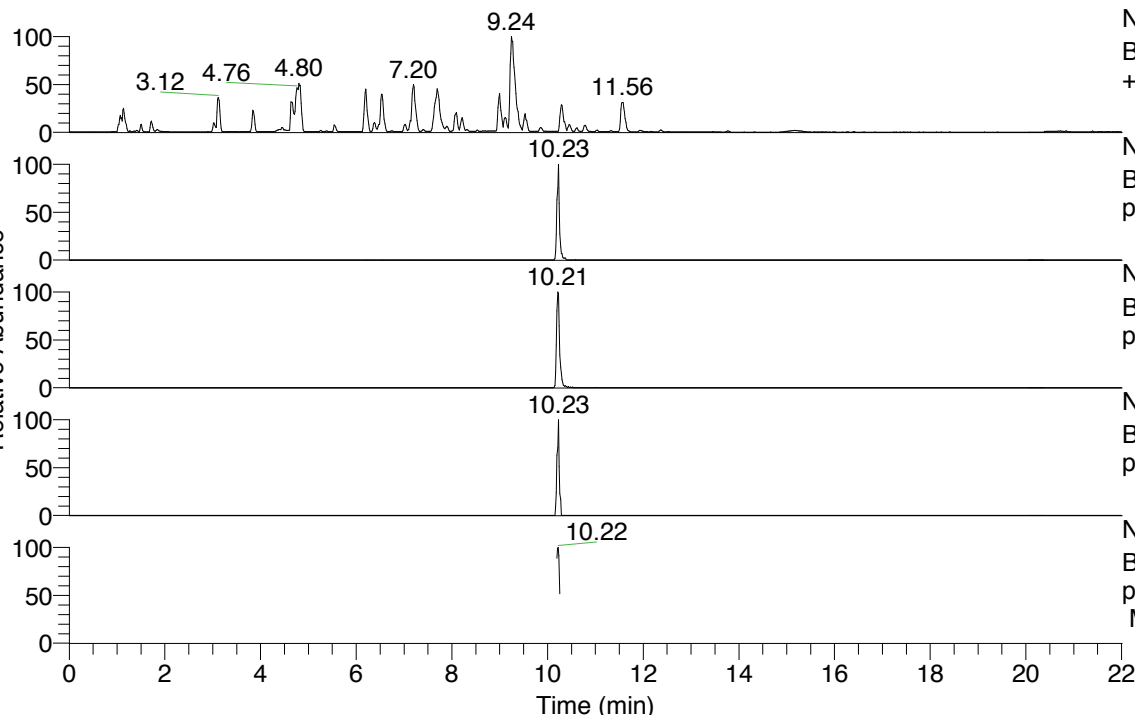


RT: 0.00 - 22.01



NL: 8.52E7
 Base Peak m/z= 100.00000-1500.00000 F: FTMS + p ESI Full ms [100.00-1500.00] MS Hcurta

NL: 5.43E5
 Base Peak m/z= 546.44409-546.45501 F: FTMS + p ESI Full ms [100.00-1500.00] MS Hcurta

NL: 6.35E5
 Base Peak m/z= 273.72595-273.73143 F: FTMS + p ESI Full ms [100.00-1500.00] MS Hcurta

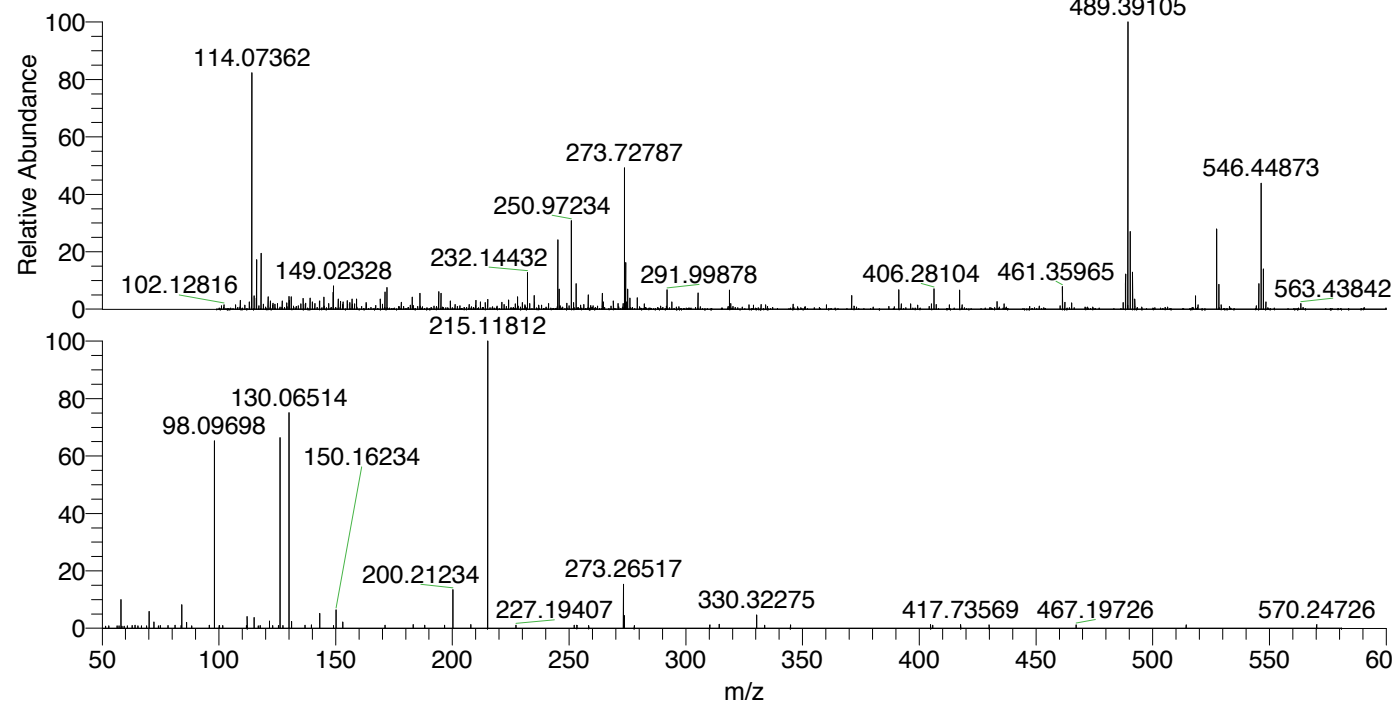
NL: 5.29E4
 Base Peak m/z= 660.43581-660.44901 F: FTMS + p ESI Full ms [100.00-1500.00] MS Hcurta

NL: 7.60E4
 Base Peak m/z= 50.00000-1500.00000 F: FTMS + p ESI d Full ms2 273.73@hcd35.00 [50.00-575.00] MS Hcurta

Hcurta#4092-4115 RT: 10.19-10.25 AV: 5

F: FTMS + p ESI d Full ms2 273.73 ...
 m/z= 50.00000-1000.00000

m/z	Intensity	Relative
58.06596	6189.5	10.05
62.86602	573.8	0.93
63.99732	650.9	1.06
70.06602	3702.2	6.01
72.08145	1386.8	2.25
81.18241	631.6	1.03
84.08153	5176.2	8.40
86.09712	1297.7	2.11
95.90762	657.4	1.07
98.09698	40690.4	66.05
100.06346	597.4	0.97
100.20753	612.7	0.99
111.83475	591.4	0.96
112.11242	2525.2	4.10
115.12344	2266.4	3.68
117.62590	578.3	0.94
121.63354	1616.3	2.62
123.06225	580.1	0.94
125.47973	593.1	0.96
126.12804	41418.0	67.23
127.36219	602.3	0.98
130.06514	47063.3	76.39
131.11769	1486.9	2.41
136.87221	667.1	1.08
139.56556	693.6	1.13
143.15438	3178.1	5.16
149.04385	605.0	0.98
150.16234	3929.9	6.38
153.04067	1357.4	2.20
171.18516	659.7	1.07
183.18507	822.9	1.34
188.17570	670.3	1.09
196.69962	685.7	1.11
200.21234	8243.3	13.38
207.86941	758.2	1.23
215.11812	61608.3	100.00
227.19407	653.1	1.06
252.22733	633.0	1.03
253.35175	650.8	1.06
258.41906	621.7	1.01
273.26517	9619.5	15.61
273.72859	2758.0	4.48
277.92057	597.1	0.97
310.26266	711.5	1.15
314.32741	890.2	1.44
330.32275	2844.2	4.62
333.75989	663.3	1.08
344.83234	734.5	1.19
404.84732	777.6	1.26
405.77554	652.8	1.06
417.73569	785.5	1.27
429.94979	746.7	1.21
467.19726	704.2	1.14
514.35548	693.7	1.13
570.24726	755.8	1.23



NL: 1.19E6
 Hcurta#4105 RT: 10.23
 AV: 1 T: FTMS + p ESI
 Full lock ms
 [100.00-1500.00]

NL: 6.13E4
 Hcurta#4092-4117 RT:
 10.19-10.25 AV: 5 F:
 FTMS + p ESI d Full ms2
 273.73@hcd35.00
 [50.00-575.00]

Hcurta#4092-4115 RT: 10.19-10.25 AV: 5

F: FTMS + p ESI d Full ms2 273.73@hcd35.00 [50.00-575.00]

m/z= 50.00000-1000.00000

m/z	Intensity	Relative
51.40647	469.1	0.76
51.43549	433.0	0.70
52.83093	491.7	0.80
52.86478	512.3	0.83
56.43805	504.6	0.82
57.16436	524.6	0.85
58.06596	6189.5	10.05
58.45833	474.8	0.77
59.41971	453.8	0.74
60.81236	506.7	0.82
62.86602	573.8	0.93
63.99732	650.9	1.06
65.24412	524.4	0.85
66.80637	503.1	0.82
69.05145	531.4	0.86
70.06602	3702.2	6.01
72.08145	1386.8	2.25
74.10165	528.4	0.86
74.11071	490.3	0.80
74.91692	551.5	0.90
78.12785	549.3	0.89
81.18241	631.6	1.03
83.81484	551.5	0.90
84.08153	5176.2	8.40
86.09712	1297.7	2.11
88.27904	526.5	0.85
95.90762	657.4	1.07
98.09698	40690.4	66.05
100.06346	597.4	0.97
100.20753	612.7	0.99
101.59143	573.0	0.93
111.83475	591.4	0.96
112.11242	2525.2	4.10
115.12344	2266.4	3.68
116.80130	539.4	0.88
117.62590	578.3	0.94
121.63354	1616.3	2.62
123.06225	580.1	0.94
125.47973	593.1	0.96

Hcurta#4092-4115 RT: 10.19-10.25 AV: 5

F: FTMS + p ESI d Full ms2 273.73@hcd35.00 [50.00-575.00]

m/z= 50.00000-1000.00000

m/z	Intensity	Relative
126.12804	41418.0	67.23
127.36219	602.3	0.98
130.06514	47063.3	76.39
131.11769	1486.9	2.41
136.87221	667.1	1.08
139.56556	693.6	1.13
143.15438	3178.1	5.16
149.04385	605.0	0.98
150.16234	3929.9	6.38
153.04067	1357.4	2.20
171.18516	659.7	1.07
183.18507	822.9	1.34
188.17570	670.3	1.09
196.69962	685.7	1.11
200.21234	8243.3	13.38
207.86941	758.2	1.23
215.11812	61608.3	100.00
227.19407	653.1	1.06
252.22733	633.0	1.03
253.35175	650.8	1.06
258.41906	621.7	1.01
273.26517	9619.5	15.61
273.72859	2758.0	4.48
277.92057	597.1	0.97
310.26266	711.5	1.15
314.32741	890.2	1.44
330.32275	2844.2	4.62
333.75989	663.3	1.08
344.83234	734.5	1.19
404.84732	777.6	1.26
405.77554	652.8	1.06
417.73569	785.5	1.27
429.94979	746.7	1.21
467.19726	704.2	1.14
514.35548	693.7	1.13
570.24726	755.8	1.23