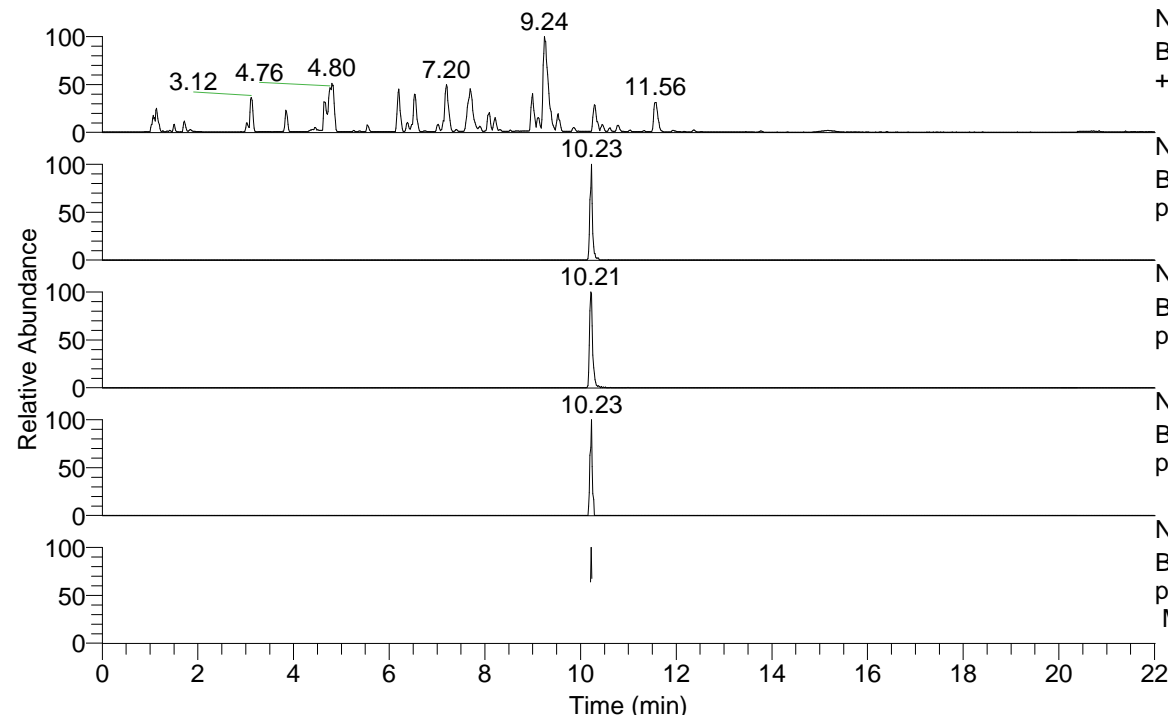


RT: 0.00 - 22.01



NL: 8.52E7
 Base Peak m/z= 100.00000-1500.00000 F: FTMS + p ESI Full ms [100.00-1500.00] MS Hcurta

NL: 5.43E5
 Base Peak m/z= 546.44409-546.45501 F: FTMS + p ESI Full ms [100.00-1500.00] MS Hcurta

NL: 6.35E5
 Base Peak m/z= 273.72595-273.73143 F: FTMS + p ESI Full ms [100.00-1500.00] MS Hcurta

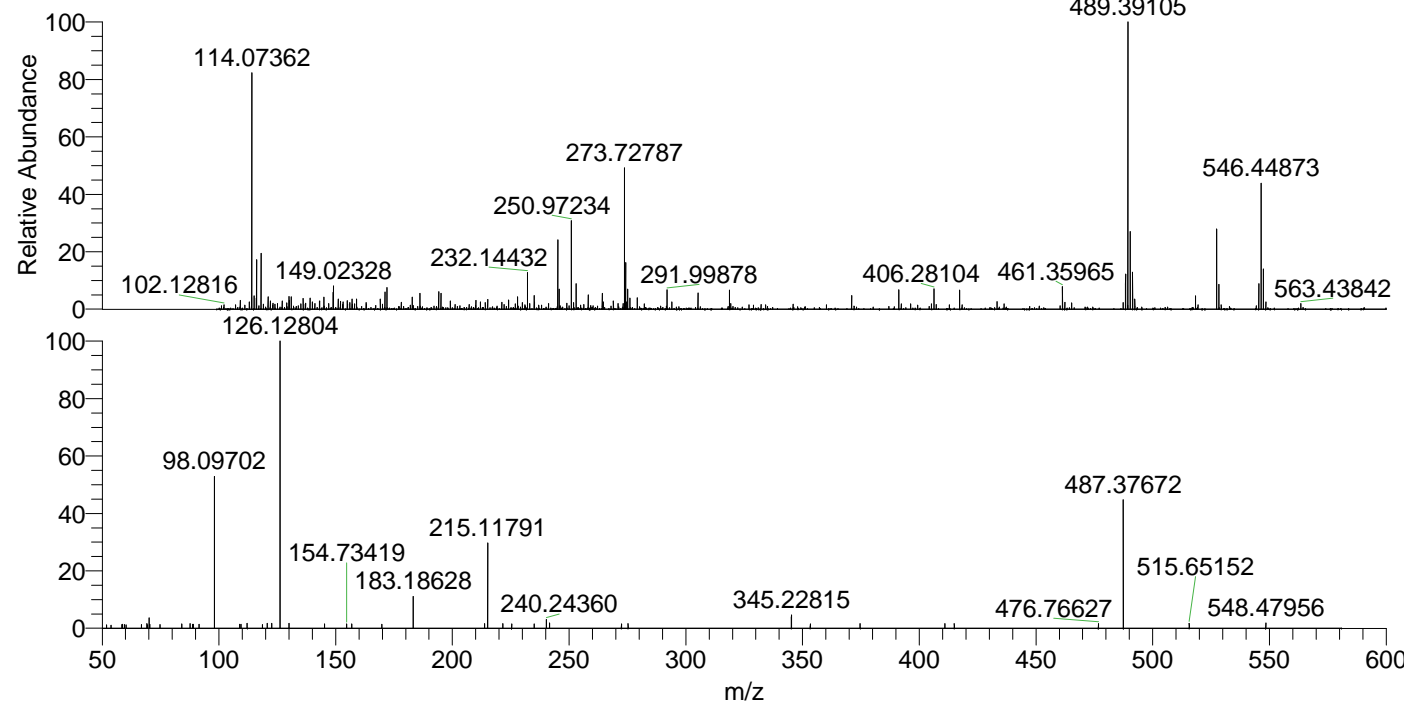
NL: 5.29E4
 Base Peak m/z= 660.43581-660.44901 F: FTMS + p ESI Full ms [100.00-1500.00] MS Hcurta

NL: 1.44E5
 Base Peak m/z= 50.00000-1500.00000 F: FTMS + p ESI d Full ms2 546.45@hcd35.00 [50.00-575.00] MS Hcurta

Hcurta#4098-4109 RT: 10.21-10.24 AV: 3

F: FTMS + p ESI d Full ms2 546.45 ...

m/z	Intensity	Relative
51.87254	1230.7	1.20
53.73929	1053.5	1.02
58.45942	1300.9	1.26
58.72317	1375.8	1.34
59.52539	1239.8	1.20
60.22969	1251.3	1.22
66.82643	1232.2	1.20
69.09358	1679.9	1.63
69.41600	1208.2	1.17
70.06590	3668.4	3.56
70.39509	1360.6	1.32
74.69771	1286.3	1.25
84.08133	1573.9	1.53
87.62431	1624.5	1.58
88.72112	1359.6	1.32
88.99184	1453.0	1.41
91.43158	1439.5	1.40
98.09702	52557.8	51.05
108.93359	1356.3	1.32
109.46922	1433.2	1.39
112.11243	1713.4	1.66
118.58692	1320.7	1.28
120.63702	1716.8	1.67
122.56001	1747.8	1.70
126.12804	102960.9	100.00
126.13668	1688.1	1.64
130.06528	1775.3	1.72
145.28056	1491.1	1.45
154.73419	1534.5	1.49
156.91341	1538.6	1.49
169.76708	1405.6	1.37
183.18628	11017.7	10.70
213.75772	1642.9	1.60
215.11791	29484.8	28.64
221.58087	1669.2	1.62
225.39631	1560.9	1.52
235.07641	1499.2	1.46
240.24360	3001.5	2.92
241.65108	1795.9	1.74
272.42115	1548.4	1.50
275.28542	1598.0	1.55
345.22815	4553.6	4.42
353.32869	1571.6	1.53
374.67052	1686.0	1.64
410.98013	1604.9	1.56
415.00998	1615.5	1.57
476.76627	1647.7	1.60
487.37672	44460.4	43.18
515.65152	1700.8	1.65
548.47956	1900.6	1.85



NL: 1.19E6
 Hcurta#4105 RT: 10.23
 AV: 1 T: FTMS + p ESI
 Full lock ms
 [100.00-1500.00]

NL: 9.93E4
 Hcurta#4094-4113 RT:
 10.21-10.24 AV: 3 F:
 FTMS + p ESI d Full ms2
 546.45@hcd35.00
 [50.00-575.00]