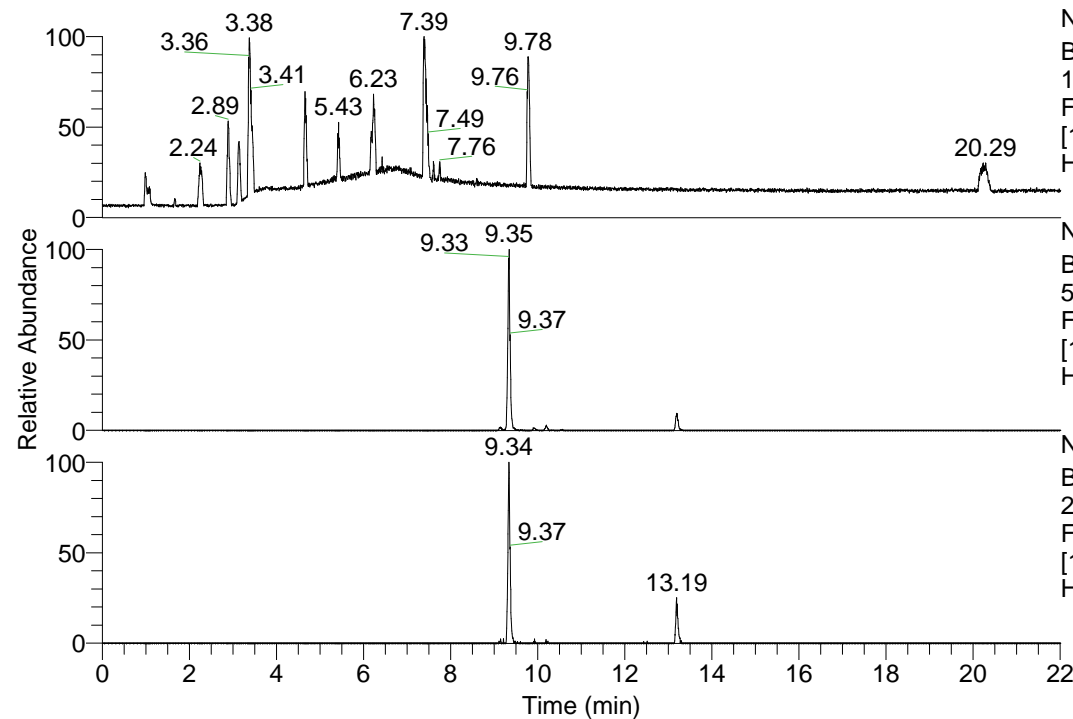


RT: 0.00 - 22.01



NL: 1.13E8
 Base Peak m/z=
 100.00000-1500.00000 F:
 FTMS + p ESI Full ms
 [100.00-1500.00] MS
 Hcurta_HDX

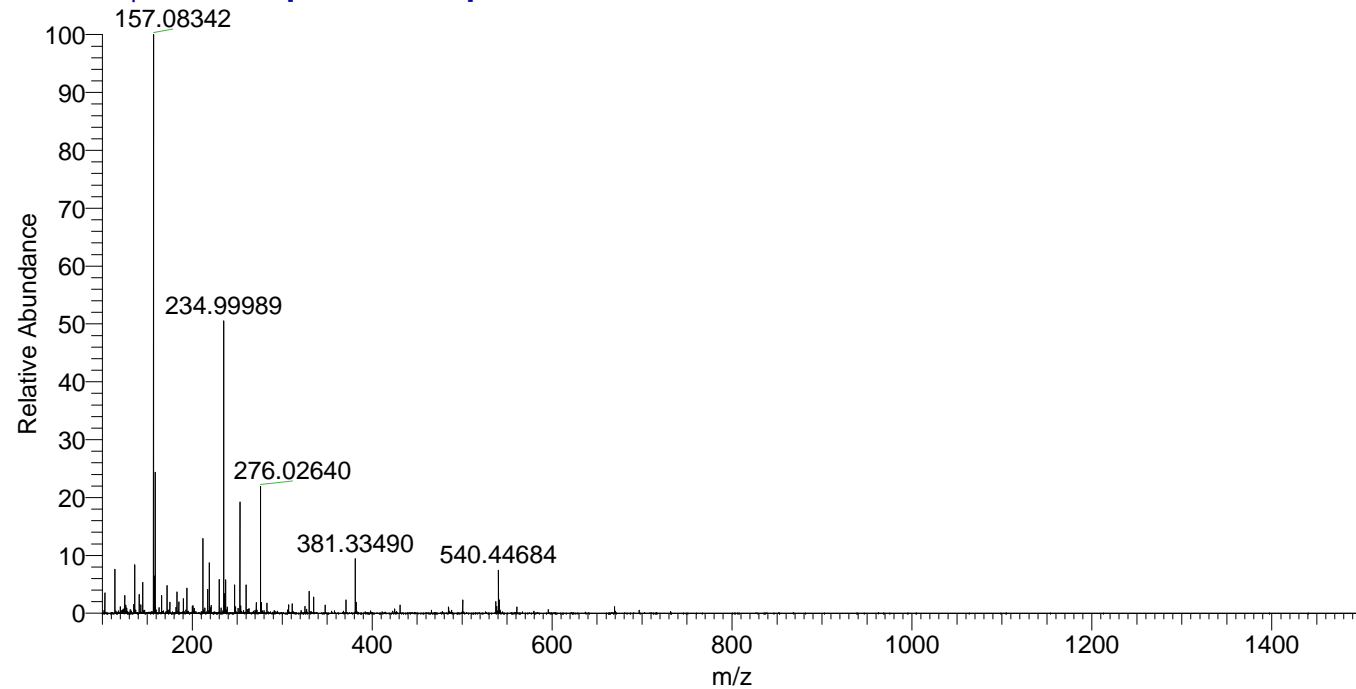
NL: 1.59E6
 Base Peak m/z=
 540.44503-540.45043 F:
 FTMS + p ESI Full ms
 [100.00-1500.00] MS
 Hcurta_HDX

NL: 4.15E5
 Base Peak m/z=
 271.22956-271.23228 F:
 FTMS + p ESI Full ms
 [100.00-1500.00] MS
 Hcurta_HDX

Hcurta_HDX#1516 RT: 9.35
 T: FTMS + p ESI Full ms [100.00-1500.00]
 m/z= 540.00000-541.00000

m/z	Intensity	Relative	Delta (ppm)	Composition
540.44684	1508729.6	100.00	-0.63	C ₂₈ H ₄₂ ² H ₈ O ₃ N ₇
			2.23	C ₂₈ H ₄₀ ² H ₉ O ₃ N ₇
			-3.49	C ₂₈ H ₄₄ ² H ₇ O ₃ N ₇

Hcurta_HDX #1516 RT: 9.35 AV: 1 NL: 2.03E7
 T: FTMS + p ESI Full ms [100.00-1500.00]



Hcurta_HDX #1516 RT: 9.35 AV: 1 NL: 1.51E6
 T: FTMS + p ESI Full ms [100.00-1500.00]

