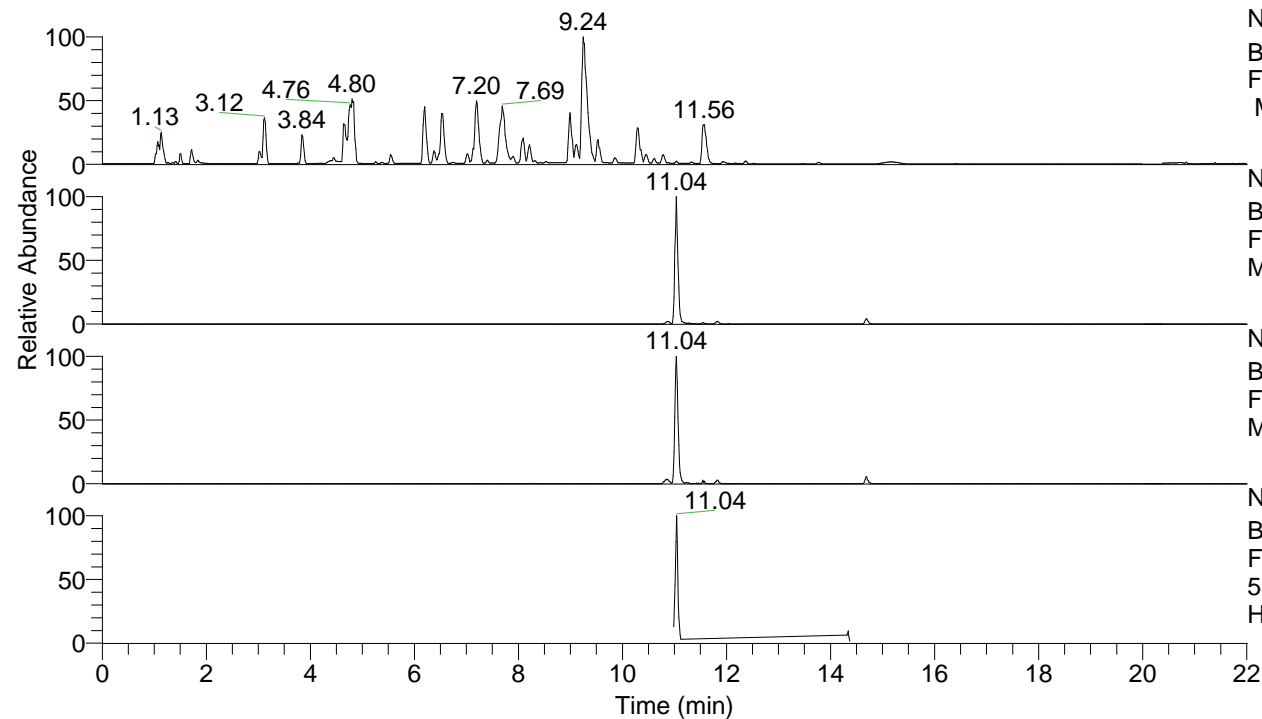


RT: 0.00 - 22.01



NL: 8.52E7
 Base Peak m/z= 100.00000-1500.00000
 F: FTMS + p ESI Full ms [100.00-1500.00]
 MS Hcurta

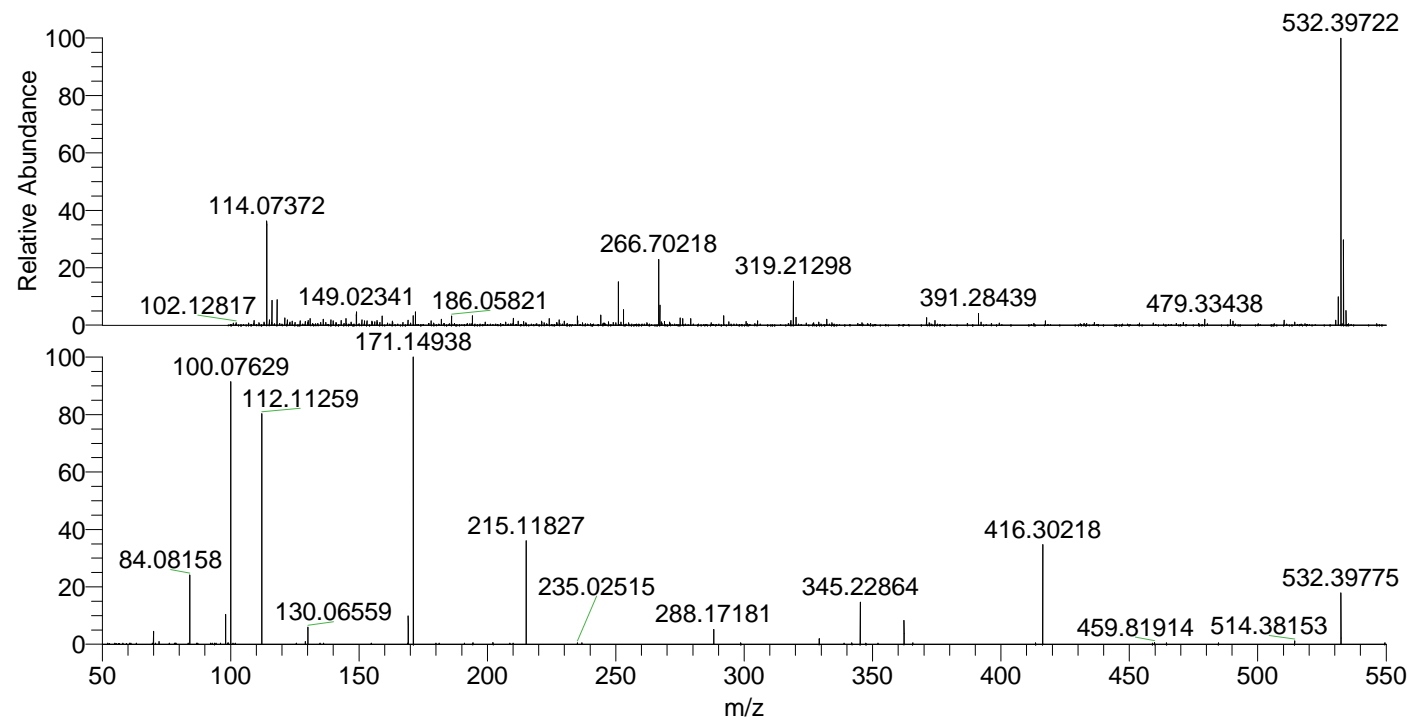
NL: 2.25E6
 Base Peak m/z= 532.39219-532.40283 F:
 FTMS + p ESI Full ms [100.00-1500.00]
 MS Hcurta

NL: 5.13E5
 Base Peak m/z= 266.70000-266.70534 F:
 FTMS + p ESI Full ms [100.00-1500.00]
 MS Hcurta

NL: 3.63E5
 Base Peak m/z= 50.00000-1500.00000 F:
 FTMS + p ESI d Full ms2
 532.31@hcd35.00 [50.00-560.00] MS
 Hcurta

Hcurta#4414-4442 RT: 11.00-11.07 AV: 6
 F: FTMS + p ESI d Full ms2 532.31 ...
 m/z= 50.00000-1000.00000

m/z	Intensity	Relative
70.06593	8571.9	4.18
72.08176	1770.0	0.86
84.08155	48119.6	23.49
98.09718	18991.8	9.27
100.07628	183127.5	89.39
112.11258	158712.2	77.47
129.13953	1755.9	0.86
130.06555	11784.6	5.75
169.13392	1765.2	0.86
169.17038	20291.2	9.91
171.14937	204857.6	100.00
202.19104	1097.6	0.54
215.11830	71213.2	34.76
288.17181	9504.4	4.64
329.23448	3612.7	1.76
345.22853	29872.1	14.58
362.25589	15253.7	7.45
416.30221	68378.3	33.38
459.81914	1147.0	0.56
514.38153	2207.0	1.08
532.39776	34316.1	16.75



NL: 2.20E6
 Hcurta#4429 RT: 11.04
 AV: 1 T: FTMS + p ESI
 Full lock ms
 [100.00-1500.00]

NL: 2.19E5
 Hcurta#4415-4447 RT:
 11.01-11.07 AV: 5 F:
 FTMS + p ESI d Full ms2
 532.31@hcd35.00
 [50.00-560.00]