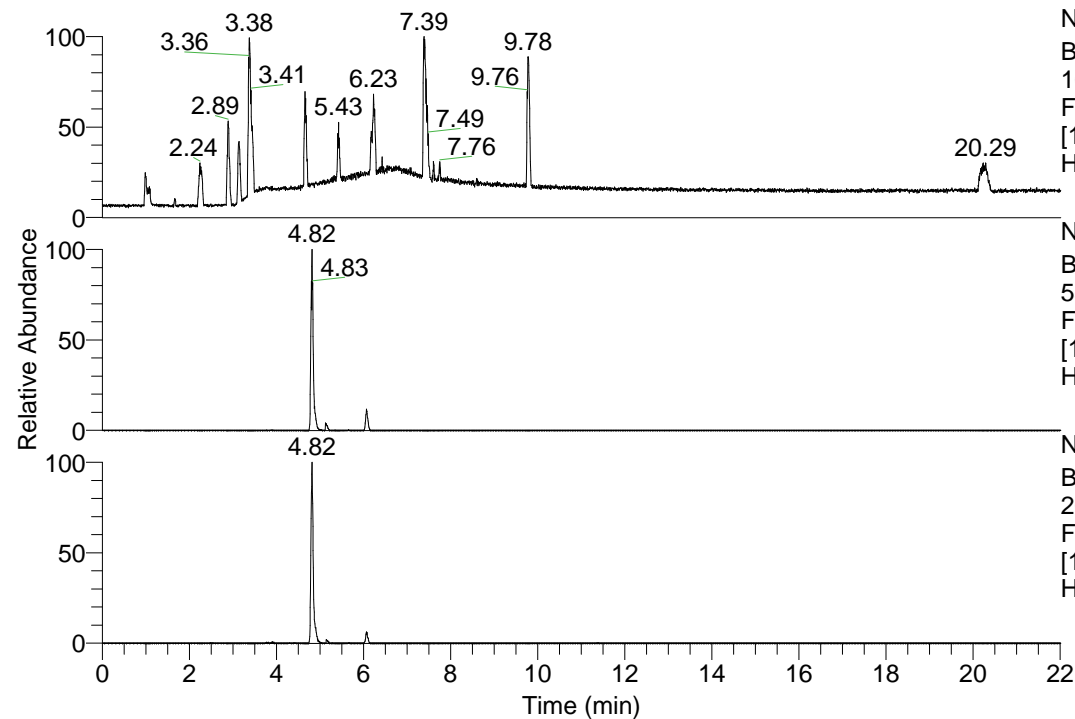


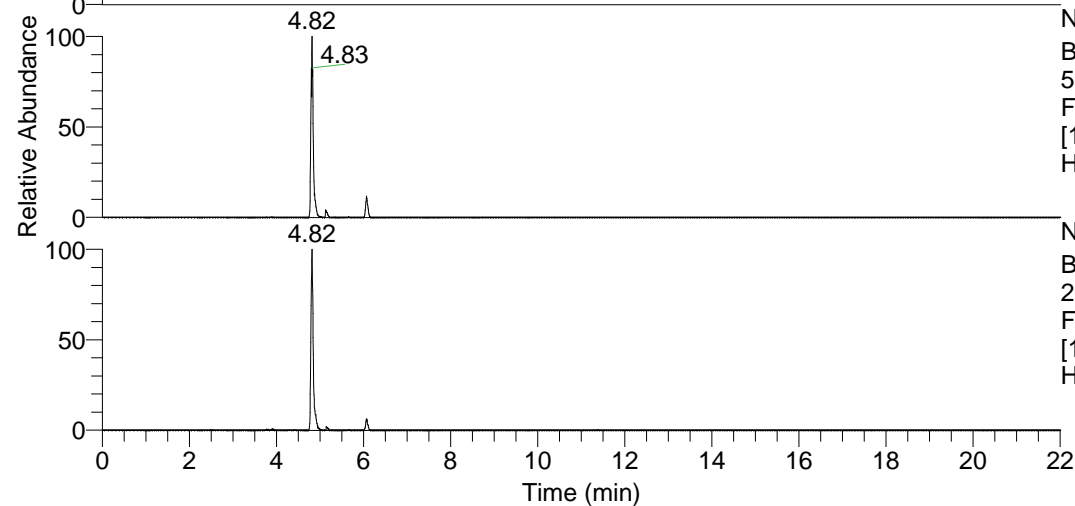
RT: 0.00 - 22.01



NL: 1.13E8
 Base Peak m/z=
 100.00000-1500.00000 F:
 FTMS + p ESI Full ms
 [100.00-1500.00] MS
 Hcurta_HDX

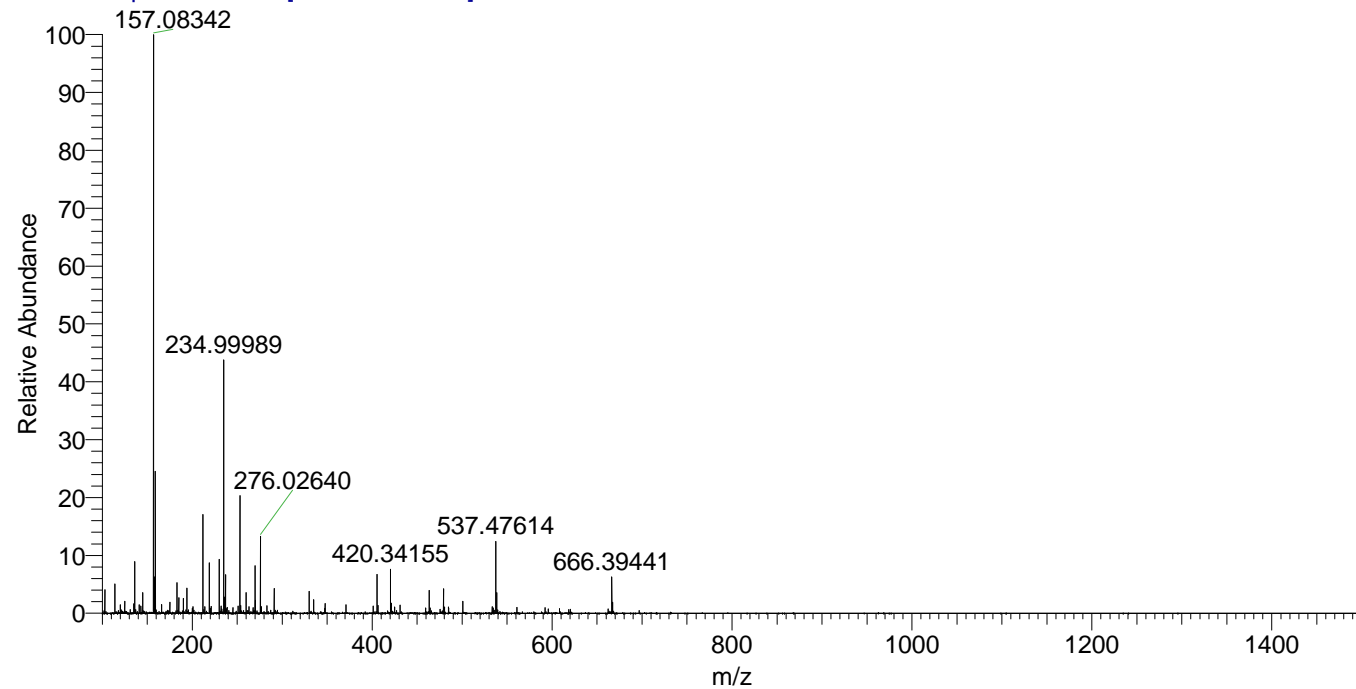
Hcurta_HDX#760 RT: 4.82
 T: FTMS + p ESI Full ms [100.00-1500.00]
 m/z= 537.00000-538.00000

m/z	Intensity	Relative	Delta (ppm)	Composition
537.47614	2626442.5	100.00	-0.82	C ₂₆ H ₄₁ ² H ₁₁ O ₄ N ₇
			2.06	C ₂₆ H ₃₉ ² H ₁₂ O ₄ N ₇
			-3.70	C ₂₆ H ₄₃ ² H ₁₀ O ₄ N ₇
			4.95	C ₂₆ H ₃₇ ² H ₁₃ O ₄ N ₇



NL: 2.63E6
 Base Peak m/z=
 537.47443-537.47981 F:
 FTMS + p ESI Full ms
 [100.00-1500.00] MS
 Hcurta_HDX

Hcurta_HDX #760 RT: 4.82 AV: 1 NL: 2.11E7
 T: FTMS + p ESI Full ms [100.00-1500.00]



Hcurta_HDX #760 RT: 4.82 AV: 1 NL: 2.62E6
 T: FTMS + p ESI Full ms [100.00-1500.00]

