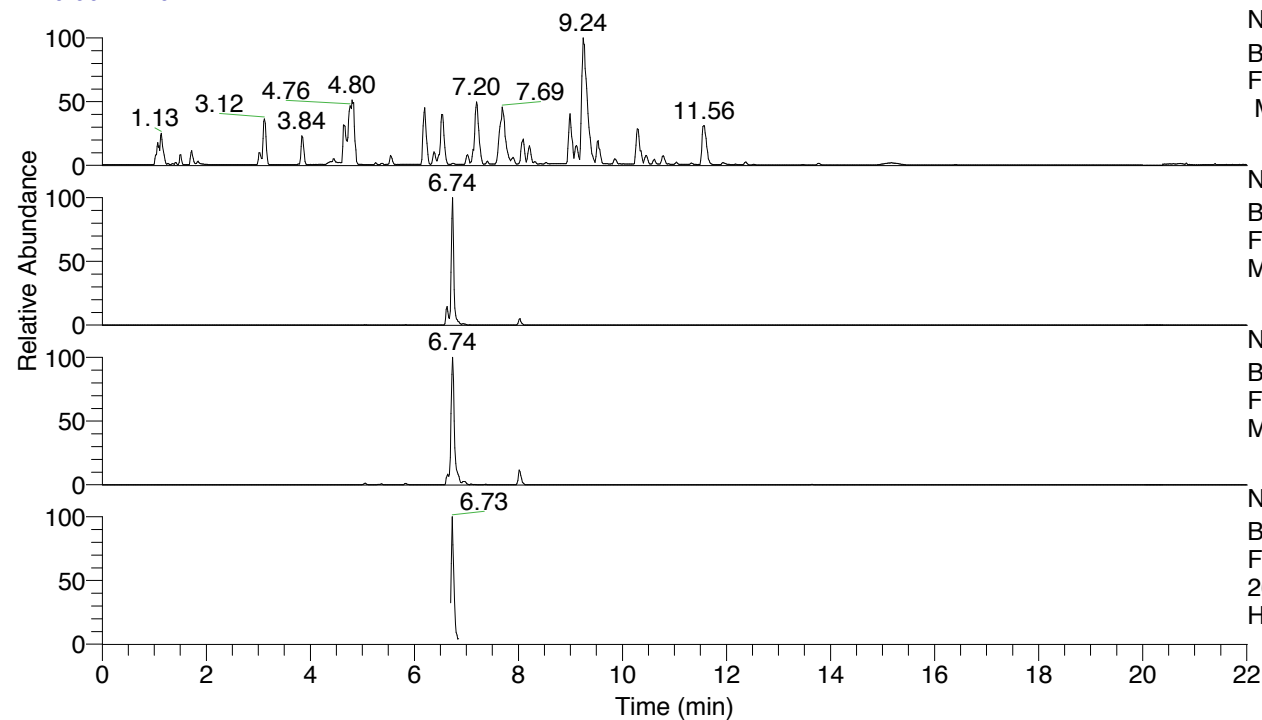


RT: 0.00 - 22.01



NL: 8.52E7  
 Base Peak m/z= 100.00000-1500.00000  
 F: FTMS + p ESI Full ms [100.00-1500.00]  
 MS Hcurta

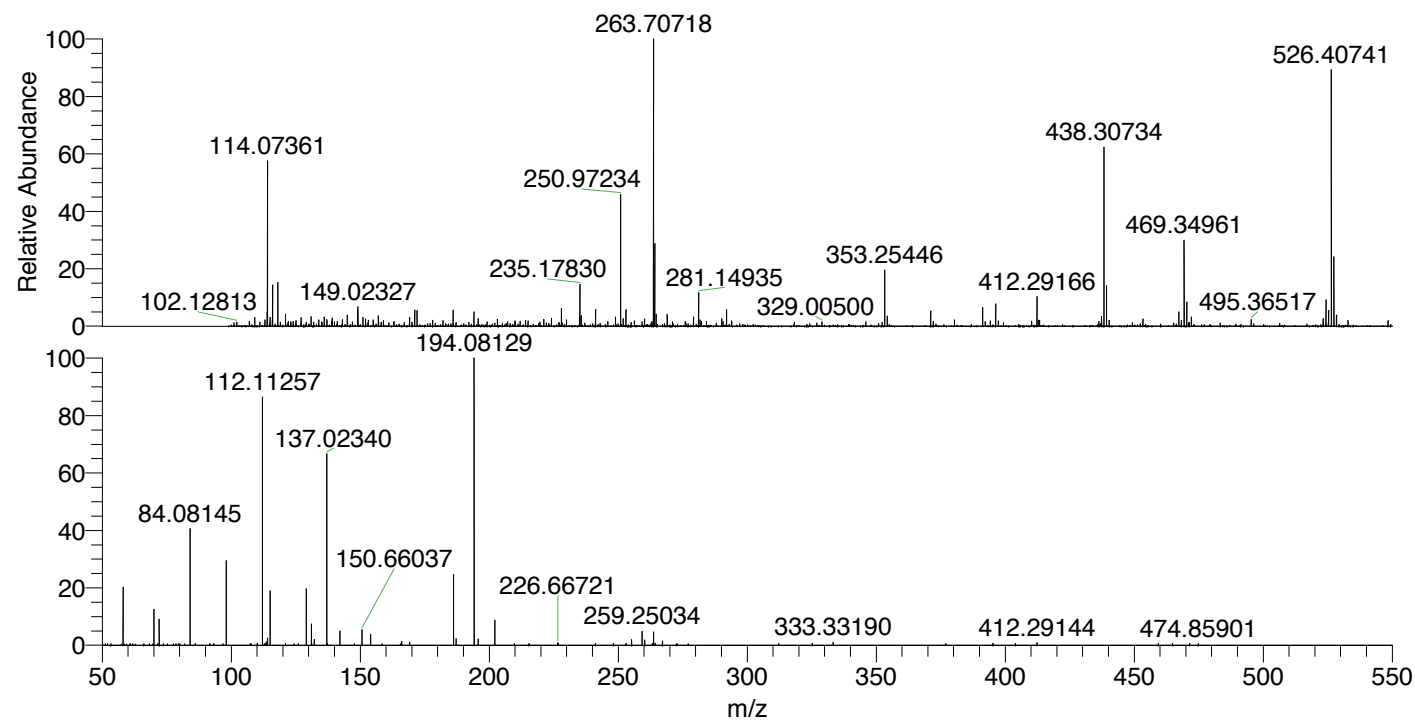
NL: 1.27E6  
 Base Peak m/z= 526.40282-526.41334 F:  
 FTMS + p ESI Full ms [100.00-1500.00]  
 MS Hcurta

NL: 1.41E6  
 Base Peak m/z= 263.70531-263.71059 F:  
 FTMS + p ESI Full ms [100.00-1500.00]  
 MS Hcurta

NL: 1.74E5  
 Base Peak m/z= 50.00000-1500.00000 F:  
 FTMS + p ESI d Full ms2  
 263.71@hcd35.00 [50.00-555.00] MS  
 Hcurta

Hcurta#2692-2715 RT: 6.71-6.77 AV: 5  
 F: FTMS + p ESI d Full ms2 263.71 ...  
 m/z= 50.00000-1000.00000

m/z	Intensity	Relative
58.06603	22640.5	20.62
70.06595	13981.9	12.73
72.08157	10146.1	9.24
84.08145	45154.4	41.12
91.75207	669.4	0.61
98.09704	32617.2	29.70
107.40615	629.0	0.57
107.59834	698.4	0.64
110.09665	767.1	0.70
112.10521	841.2	0.77
112.11257	94826.6	86.35
113.61786	1293.3	1.18
114.09189	2765.7	2.52
115.12336	20920.7	19.05
121.02891	750.1	0.68
125.94040	665.5	0.61
129.13902	21772.6	19.83
131.11826	8246.0	7.51
132.14986	2332.1	2.12
137.02340	74336.0	67.69
137.28401	649.1	0.59
142.14692	5446.2	4.96
150.66037	6074.1	5.53
154.04998	4279.7	3.90
166.05021	1550.2	1.41
169.16994	1211.7	1.10
186.19692	27503.3	25.04
187.18609	2475.0	2.25
194.08129	109818.2	100.00
194.17260	715.3	0.65
195.69969	2409.4	2.19
202.19180	9838.3	8.96
209.73269	635.5	0.58
215.39004	630.8	0.57
226.44852	729.2	0.66
226.66721	1055.2	0.96
241.17421	658.4	0.60
248.14221	666.7	0.61
255.19414	2209.6	2.01
259.25034	5258.9	4.79
260.28212	2000.5	1.82
263.21517	682.2	0.62
263.70789	5199.6	4.73
264.30260	808.1	0.74
267.13467	1685.2	1.53
325.18846	671.0	0.61
333.33190	1217.9	1.11
376.96460	667.5	0.61
395.26643	783.3	0.71
403.92733	644.8	0.59
412.29144	996.0	0.91
459.33638	713.0	0.65
464.83704	707.1	0.64
471.46826	662.7	0.60
474.85901	726.9	0.66



NL: 1.36E6  
 Hcurta#2701 RT: 6.74  
 AV: 1 T: FTMS + p ESI  
 Full lock ms  
 [100.00-1500.00]

NL: 1.10E5  
 Hcurta#2688-2715 RT:  
 6.71-6.77 AV: 5 F: FTMS  
 + p ESI d Full ms2  
 263.71@hcd35.00  
 [50.00-555.00]

Hcurta#2692-2715 RT: 6.71-6.77 AV: 5

F: FTMS + p ESI d Full ms2 263.71@hcd35.00 [50.00-555.00]

m/z= 50.00000-1000.00000

m/z	Intensity	Relative
58.06603	22640.5	20.62
60.72615	607.1	0.55
61.86258	581.5	0.53
69.66731	560.3	0.51
70.06595	13981.9	12.73
72.08157	10146.1	9.24
78.58692	583.8	0.53
84.08145	45154.4	41.12
86.06031	623.5	0.57
91.75207	669.4	0.61
93.22206	625.4	0.57
96.82513	560.9	0.51
98.09704	32617.2	29.70
107.40615	629.0	0.57
107.59834	698.4	0.64
110.09665	767.1	0.70
112.10521	841.2	0.77
112.11257	94826.6	86.35
112.88000	601.7	0.55
113.10769	575.9	0.52
113.61786	1293.3	1.18
114.09189	2765.7	2.52
115.12336	20920.7	19.05
121.02891	750.1	0.68
125.94040	665.5	0.61
129.13902	21772.6	19.83
131.11826	8246.0	7.51
131.23467	613.9	0.56
132.14986	2332.1	2.12
137.02340	74336.0	67.69
137.28401	649.1	0.59
142.14692	5446.2	4.96
147.72127	581.1	0.53
150.66037	6074.1	5.53
154.04998	4279.7	3.90
158.45547	589.2	0.54
165.55351	600.5	0.55
166.05021	1550.2	1.41
169.16994	1211.7	1.10

Hcurta#2692-2715 RT: 6.71-6.77 AV: 5

F: FTMS + p ESI d Full ms2 263.71@hcd35.00 [50.00-555.00]

m/z= 50.00000-1000.00000

m/z	Intensity	Relative
186.19692	27503.3	25.04
187.18609	2475.0	2.25
194.08129	109818.2	100.00
194.17260	715.3	0.65
195.69969	2409.4	2.19
202.19180	9838.3	8.96
209.73269	635.5	0.58
215.39004	630.8	0.57
226.44852	729.2	0.66
226.66721	1055.2	0.96
241.17421	658.4	0.60
248.14221	666.7	0.61
252.92824	571.1	0.52
253.14504	613.0	0.56
255.19414	2209.6	2.01
259.25034	5258.9	4.79
260.28212	2000.5	1.82
263.21517	682.2	0.62
263.70789	5199.6	4.73
264.30260	808.1	0.74
267.13467	1685.2	1.53
272.57123	566.6	0.52
273.04512	595.5	0.54
277.10873	601.1	0.55
312.21393	625.7	0.57
325.18846	671.0	0.61
333.33190	1217.9	1.11
376.96460	667.5	0.61
395.26643	783.3	0.71
403.92733	644.8	0.59
412.29144	996.0	0.91
459.33638	713.0	0.65
464.83704	707.1	0.64
471.46826	662.7	0.60
474.85901	726.9	0.66