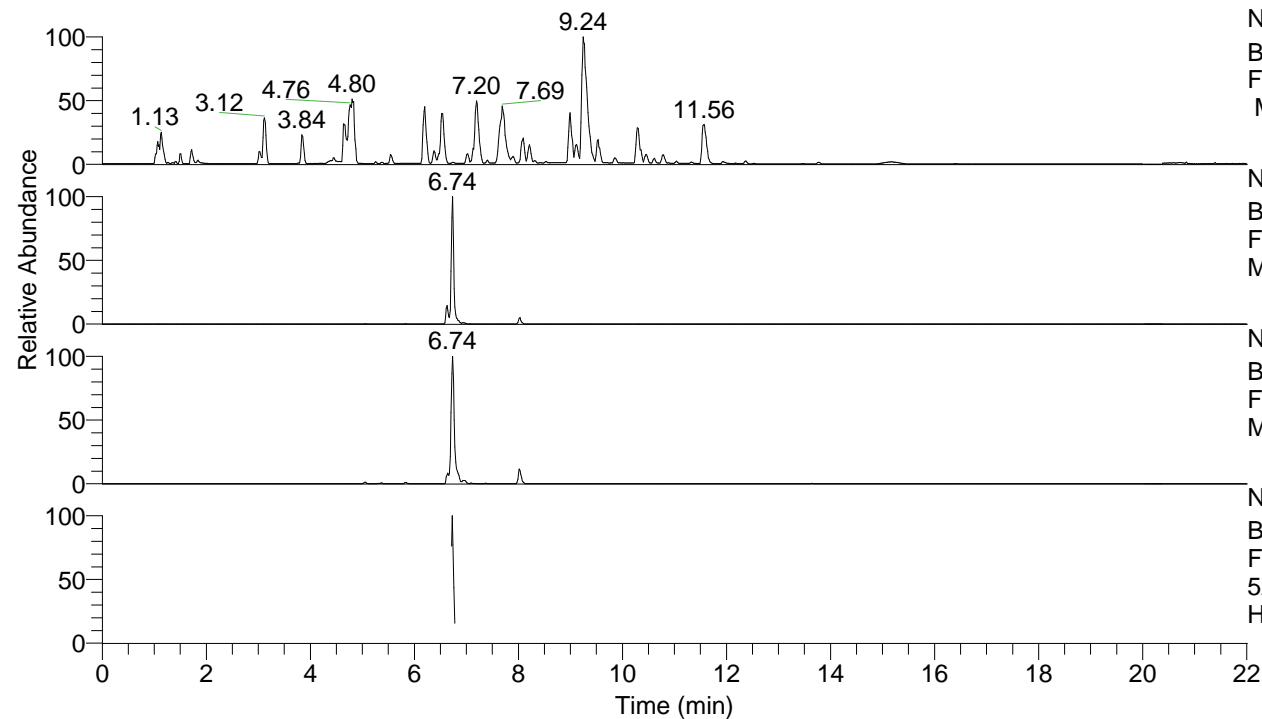


RT: 0.00 - 22.01



NL: 8.52E7
 Base Peak m/z= 100.00000-1500.00000
 F: FTMS + p ESI Full ms [100.00-1500.00]
 MS Hcurta

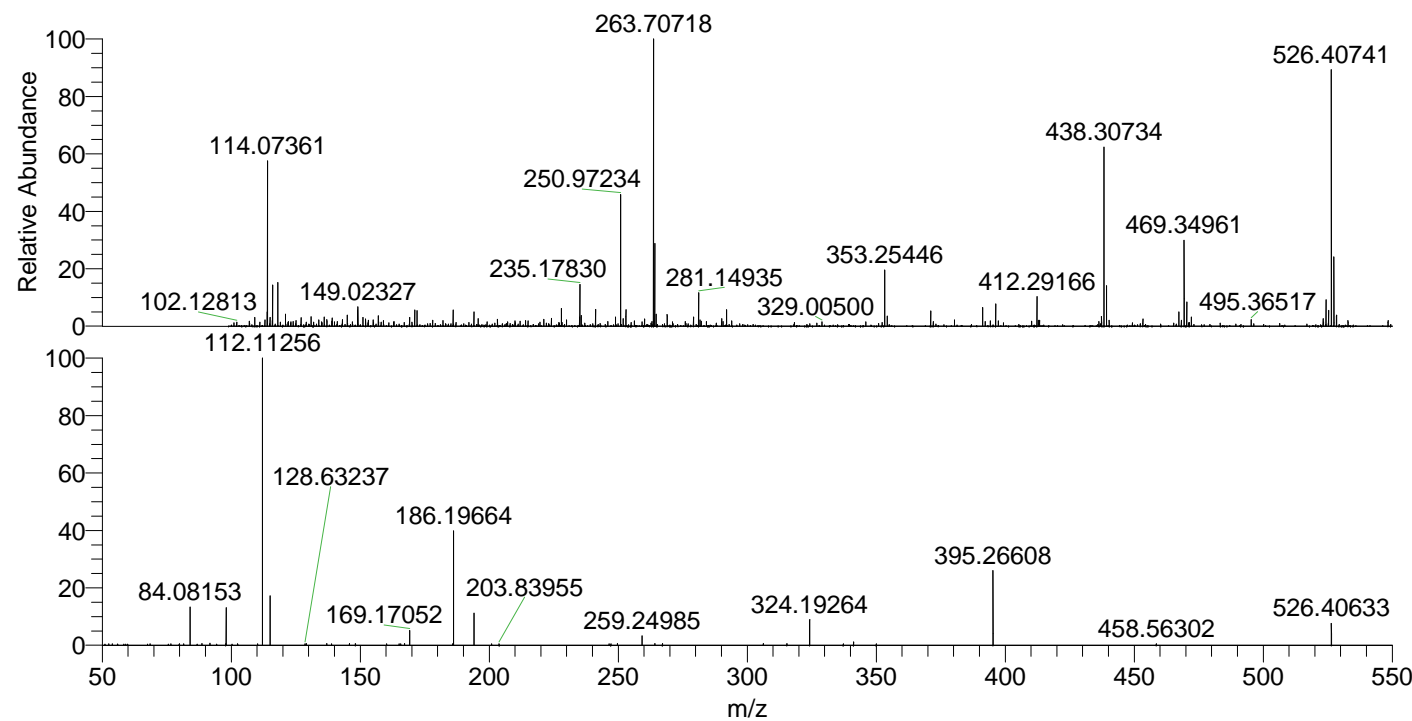
NL: 1.27E6
 Base Peak m/z= 526.40282-526.41334 F:
 FTMS + p ESI Full ms [100.00-1500.00]
 MS Hcurta

NL: 1.41E6
 Base Peak m/z= 263.70531-263.71059 F:
 FTMS + p ESI Full ms [100.00-1500.00]
 MS Hcurta

NL: 3.20E5
 Base Peak m/z= 50.00000-1500.00000 F:
 FTMS + p ESI d Full ms2
 526.41@hcd35.00 [50.00-555.00] MS
 Hcurta

Hcurta#2693-2709 RT: 6.71-6.76 AV: 4
 F: FTMS + p ESI d Full ms2 526.41 ...
 m/z= 50.00000-1000.00000

m/z	Intensity	Relative
53.92965	1174.3	0.53
84.08153	30111.1	13.55
88.59496	1346.9	0.61
91.75249	1682.0	0.76
97.89028	1128.9	0.51
98.09710	29479.4	13.26
98.10277	1366.2	0.61
110.27642	1165.7	0.52
112.11256	222247.6	100.00
115.12343	38387.4	17.27
128.63237	1160.8	0.52
129.13931	1346.4	0.61
137.02585	1321.9	0.59
138.88931	1159.2	0.52
145.79166	1245.0	0.56
148.13793	1115.3	0.50
160.25722	1126.8	0.51
165.09192	1144.4	0.51
167.15785	1345.6	0.61
169.17052	11768.9	5.30
185.80305	1164.8	0.52
186.19664	88308.9	39.73
194.08135	24783.3	11.15
203.83955	1129.7	0.51
246.43110	1185.6	0.53
247.15640	1119.1	0.50
249.68253	1337.2	0.60
259.24985	7524.2	3.39
264.22701	1450.1	0.65
267.13605	1459.2	0.66
306.23580	1255.9	0.57
315.38271	1261.3	0.57
324.19264	20520.3	9.23
337.24772	1216.1	0.55
341.21990	2635.0	1.19
350.02462	1220.4	0.55
395.26608	57840.2	26.03
458.56302	1243.1	0.56
526.40633	17134.0	7.71



NL: 1.36E6
 Hcurta#2701 RT: 6.74
 AV: 1 T: FTMS + p ESI
 Full lock ms
 [100.00-1500.00]

NL: 2.22E5
 Hcurta#2693-2710 RT:
 6.71-6.76 AV: 4 F: FTMS
 + p ESI d Full ms2
 526.41@hcd35.00
 [50.00-555.00]