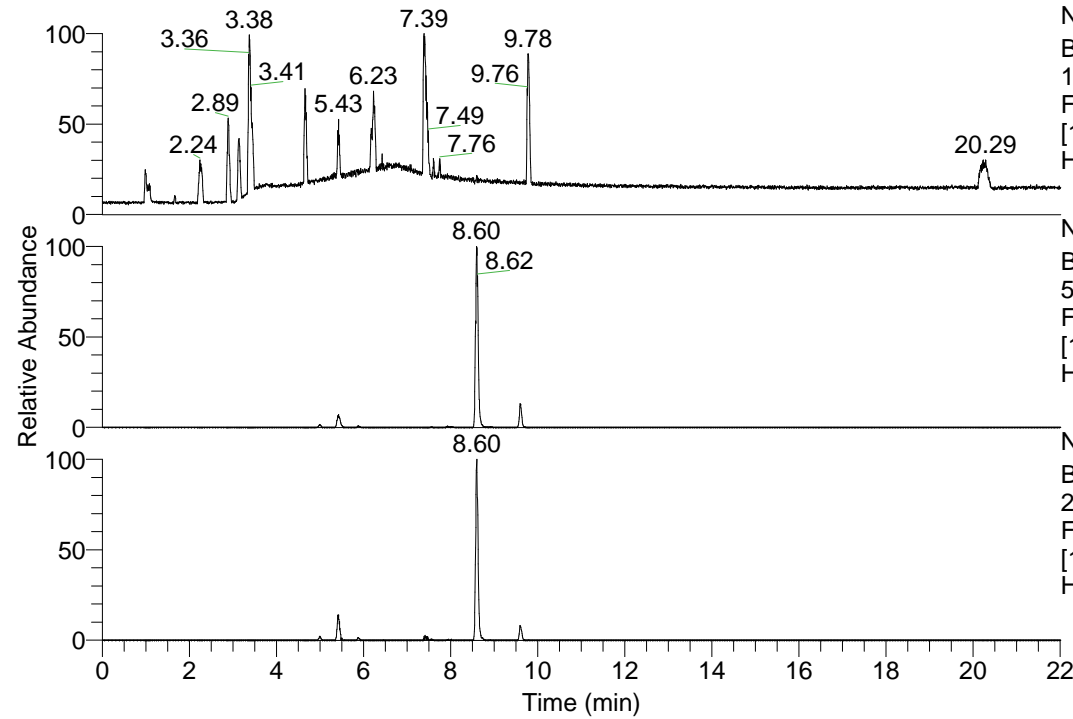


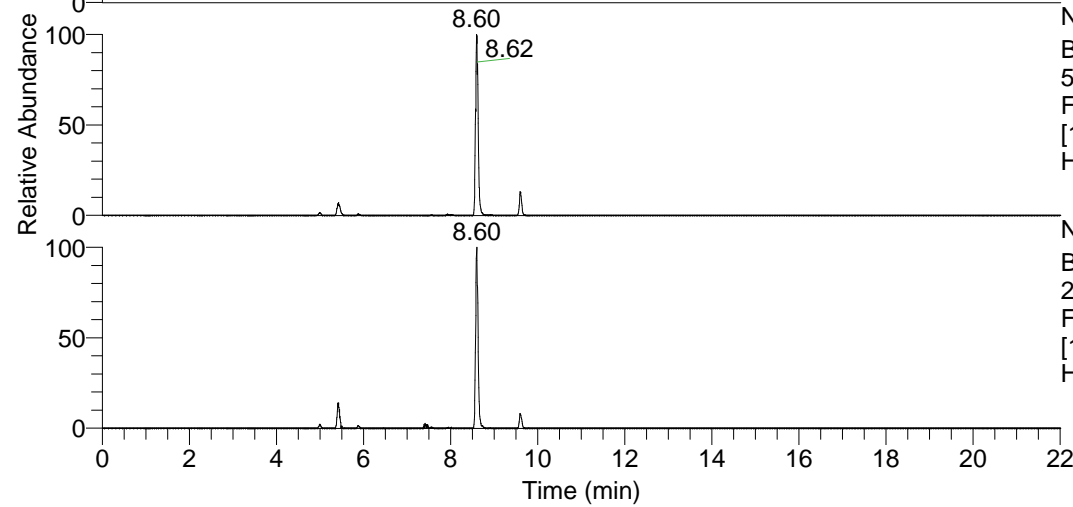
RT: 0.00 - 22.01



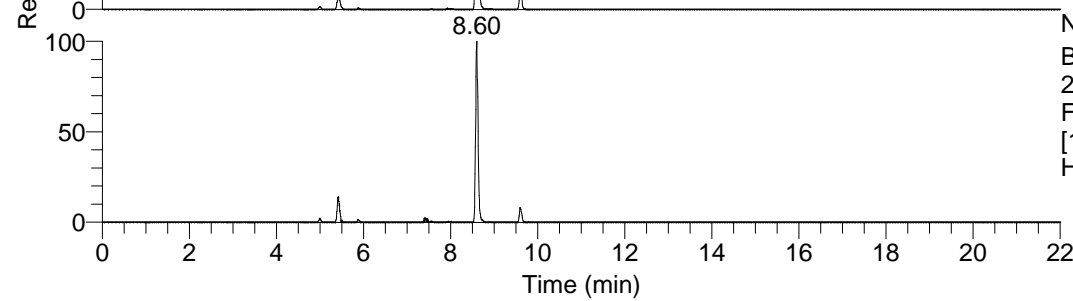
NL: 1.13E8
 Base Peak m/z=
 100.00000-1500.00000 F:
 FTMS + p ESI Full ms
 [100.00-1500.00] MS
 Hcurta_HDX

Hcurta_HDX#1556 RT: 9.60
 T: FTMS + p ESI Full ms [100.00-1500.00]
 m/z= 515.00000-516.00000

m/z	Intensity	Relative	Delta (ppm)	Composition
515.43750	3240954.0	100.00	-0.59	C ₂₆ H ₃₉ ² H ₉ O ₃ N ₇
			2.41	C ₂₆ H ₃₇ ² H ₁₀ O ₃ N ₇
			-3.60	C ₂₆ H ₄₁ ² H ₈ O ₃ N ₇

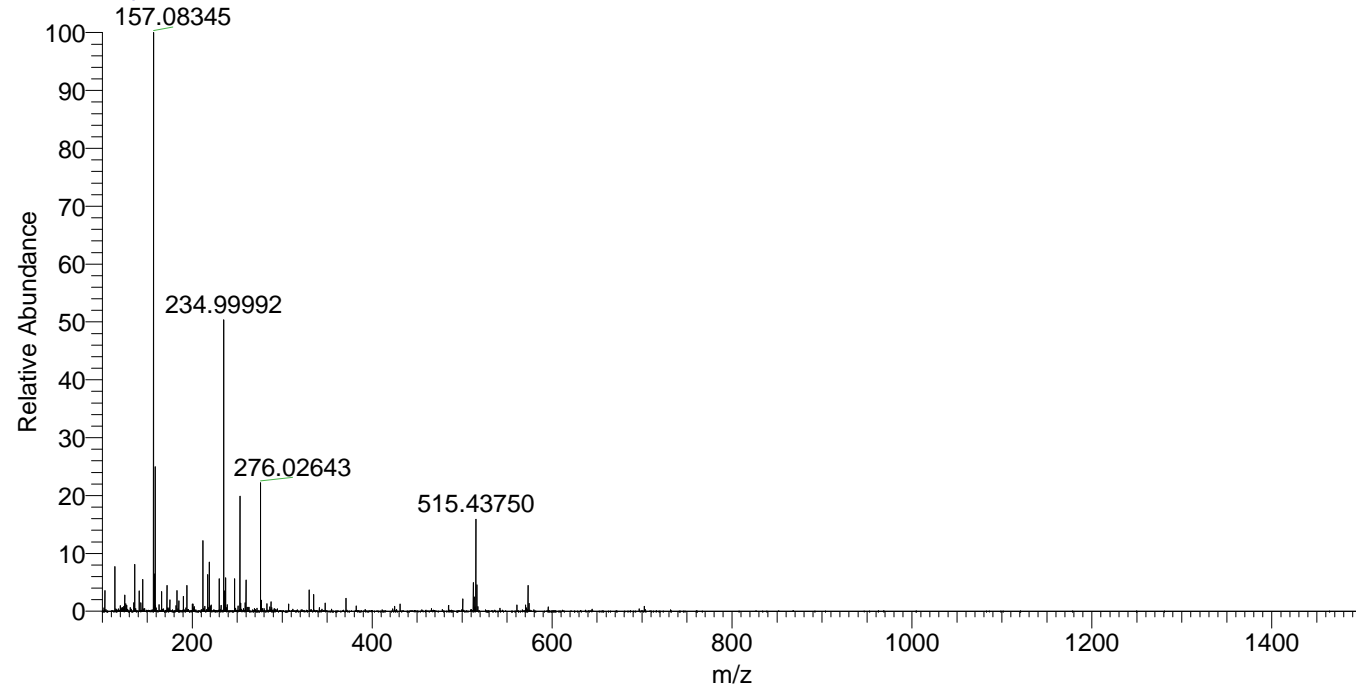


NL: 2.45E7
 Base Peak m/z=
 515.43578-515.44094 F:
 FTMS + p ESI Full ms
 [100.00-1500.00] MS
 Hcurta_HDX



NL: 3.67E6
 Base Peak m/z=
 258.72494-258.72752 F:
 FTMS + p ESI Full ms
 [100.00-1500.00] MS
 Hcurta_HDX

Hcurta_HDX #1556 RT: 9.60 AV: 1 NL: 2.00E7
 T: FTMS + p ESI Full ms [100.00-1500.00]



Hcurta_HDX #1556 RT: 9.60 AV: 1 NL: 3.19E6
 T: FTMS + p ESI Full ms [100.00-1500.00]

