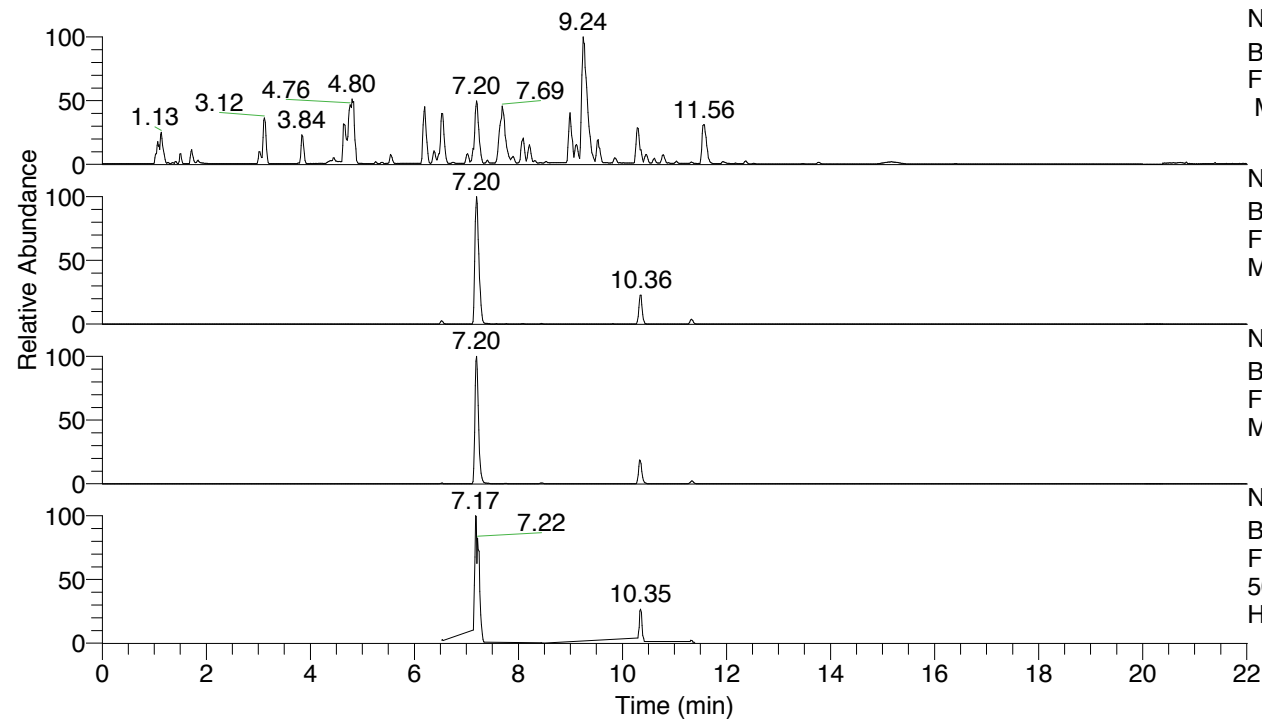


RT: 0.00 - 22.01



NL: 8.52E7
 Base Peak m/z= 100.00000-1500.00000
 F: FTMS + p ESI Full ms [100.00-1500.00]
 MS Hcurta

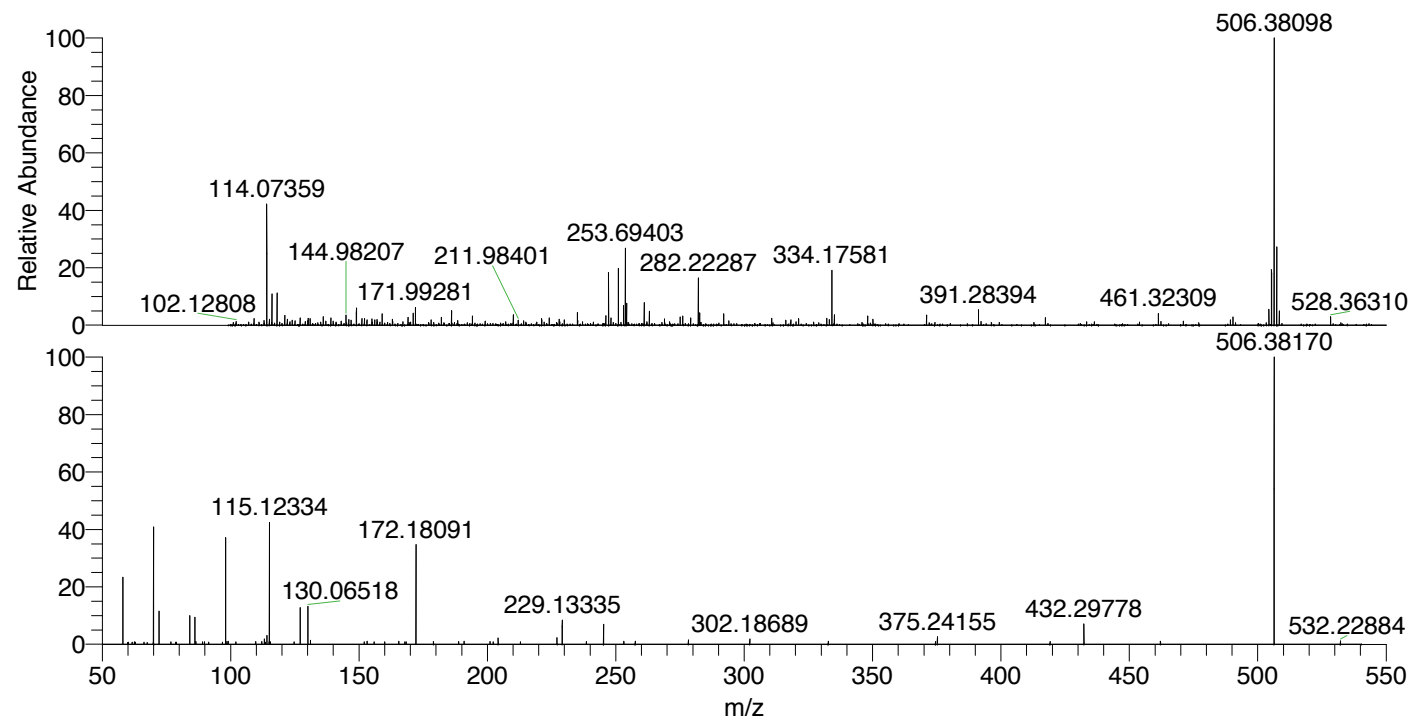
NL: 4.25E7
 Base Peak m/z= 506.37680-506.38692 F:
 FTMS + p ESI Full ms [100.00-1500.00]
 MS Hcurta

NL: 1.98E7
 Base Peak m/z= 253.69230-253.69738 F:
 FTMS + p ESI Full ms [100.00-1500.00]
 MS Hcurta

NL: 6.62E6
 Base Peak m/z= 50.00000-1500.00000 F:
 FTMS + p ESI d Full ms2
 506.38@hcd35.00 [50.00-535.00] MS
 Hcurta

Hcurta#4534-4550 RT: 11.30-11.34 AV: 4
 F: FTMS + p ESI d Full ms2 506.38 ...
 m/z= 50.00000-1000.00000

m/z	Intensity	Relative
58.06353	1025.7	0.81
58.06597	29868.7	23.50
70.06592	52235.1	41.10
72.08158	14687.4	11.56
76.71642	1006.2	0.79
84.08143	12628.2	9.94
86.06061	12183.8	9.59
86.51952	1149.8	0.90
89.10761	1022.7	0.80
98.09700	47798.1	37.61
98.53468	1132.5	0.89
99.09266	1324.5	1.04
102.09324	1096.1	0.86
109.79900	1230.2	0.97
112.11238	1264.1	0.99
113.10802	2341.3	1.84
114.09159	3953.2	3.11
115.04124	1081.3	0.85
115.12334	54203.3	42.65
115.51058	1065.1	0.84
124.74343	1038.5	0.82
127.12336	16567.7	13.04
130.06518	16991.0	13.37
131.11749	1732.9	1.36
152.03048	1068.6	0.84
153.13895	1407.3	1.11
155.86053	1101.5	0.87
159.99449	1089.6	0.86
165.50013	1312.7	1.03
167.81355	1102.2	0.87
168.40878	1064.6	0.84
172.18091	44843.9	35.29
179.01444	1193.8	0.94
188.83046	1156.4	0.91
190.92639	1346.7	1.06
201.02974	1243.5	0.98
202.23048	1076.2	0.85
204.19386	2725.1	2.14
212.82537	1140.7	0.90
227.11721	2906.0	2.29
229.13335	10606.1	8.35
238.52948	1247.5	0.98
245.23384	8891.2	7.00
253.16729	1355.9	1.07
257.57510	1423.7	1.12
278.25657	1933.7	1.52
302.18689	2389.7	1.88
332.75174	1302.7	1.03
374.49667	1247.4	0.98
375.24155	3257.4	2.56
419.14680	1250.2	0.98
432.29778	9145.1	7.20
462.10281	1305.7	1.03
506.38170	127078.3	100.00
532.22884	1437.9	1.13



NL: 1.60E6
 Hcurta#4543 RT: 11.32
 AV: 1 T: FTMS + p ESI
 Full lock ms
 [100.00-1500.00]

NL: 1.26E5
 Hcurta#4534-4555 RT:
 11.30-11.34 AV: 4 F:
 FTMS + p ESI d Full ms2
 506.38@hcd35.00
 [50.00-535.00]

Hcurta#4534-4550 RT: 11.30-11.34 AV: 4

F: FTMS + p ESI d Full ms2 506.38@hcd35.00 [50.00-535.00]

m/z= 50.00000-1000.00000

m/z	Intensity	Relative
58.06353	1025.7	0.81
58.06597	29868.7	23.50
59.87576	824.2	0.65
60.19104	892.3	0.70
61.69236	980.6	0.77
62.52449	998.0	0.79
62.56992	869.3	0.68
62.85067	974.1	0.77
66.23554	915.6	0.72
67.52638	828.4	0.65
69.87799	813.7	0.64
70.06592	52235.1	41.10
72.08158	14687.4	11.56
76.71642	1006.2	0.79
78.60160	990.9	0.78
78.85675	906.8	0.71
84.08143	12628.2	9.94
86.06061	12183.8	9.59
86.51952	1149.8	0.90
89.10761	1022.7	0.80
89.85926	999.6	0.79
91.41425	972.0	0.76
96.81301	982.6	0.77
98.09700	47798.1	37.61
98.53468	1132.5	0.89
99.09266	1324.5	1.04
102.09324	1096.1	0.86
109.79900	1230.2	0.97
112.11238	1264.1	0.99
113.10802	2341.3	1.84
113.13100	999.6	0.79
113.50563	976.3	0.77
114.09159	3953.2	3.11
115.04124	1081.3	0.85
115.12334	54203.3	42.65
115.51058	1065.1	0.84
124.74343	1038.5	0.82
127.12336	16567.7	13.04
130.06518	16991.0	13.37

Hcurta#4534-4550 RT: 11.30-11.34 AV: 4

F: FTMS + p ESI d Full ms2 506.38@hcd35.00 [50.00-535.00]

m/z= 50.00000-1000.00000

m/z	Intensity	Relative
131.11749	1732.9	1.36
152.03048	1068.6	0.84
153.13895	1407.3	1.11
155.86053	1101.5	0.87
159.99449	1089.6	0.86
165.50013	1312.7	1.03
167.81355	1102.2	0.87
168.40878	1064.6	0.84
172.18091	44843.9	35.29
179.01444	1193.8	0.94
188.83046	1156.4	0.91
190.92639	1346.7	1.06
201.02974	1243.5	0.98
202.23048	1076.2	0.85
204.19386	2725.1	2.14
212.82537	1140.7	0.90
227.11721	2906.0	2.29
229.13335	10606.1	8.35
238.52948	1247.5	0.98
245.23384	8891.2	7.00
253.16729	1355.9	1.07
257.57510	1423.7	1.12
278.25657	1933.7	1.52
302.18689	2389.7	1.88
332.75174	1302.7	1.03
374.49667	1247.4	0.98
375.24155	3257.4	2.56
419.14680	1250.2	0.98
432.29778	9145.1	7.20
462.10281	1305.7	1.03
506.38170	127078.3	100.00
532.22884	1437.9	1.13