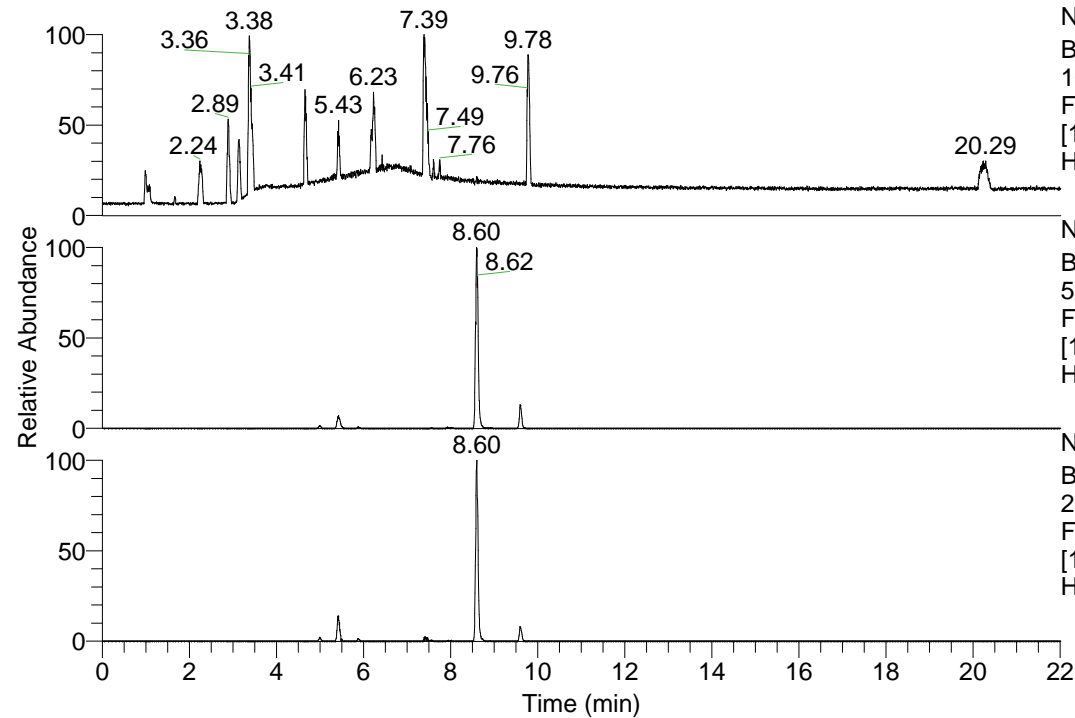


RT: 0.00 - 22.01



NL: 1.13E8
Base Peak m/z=
100.00000-1500.00000 F:
FTMS + p ESI Full ms
[100.00-1500.00] MS
Hcurta_HDX

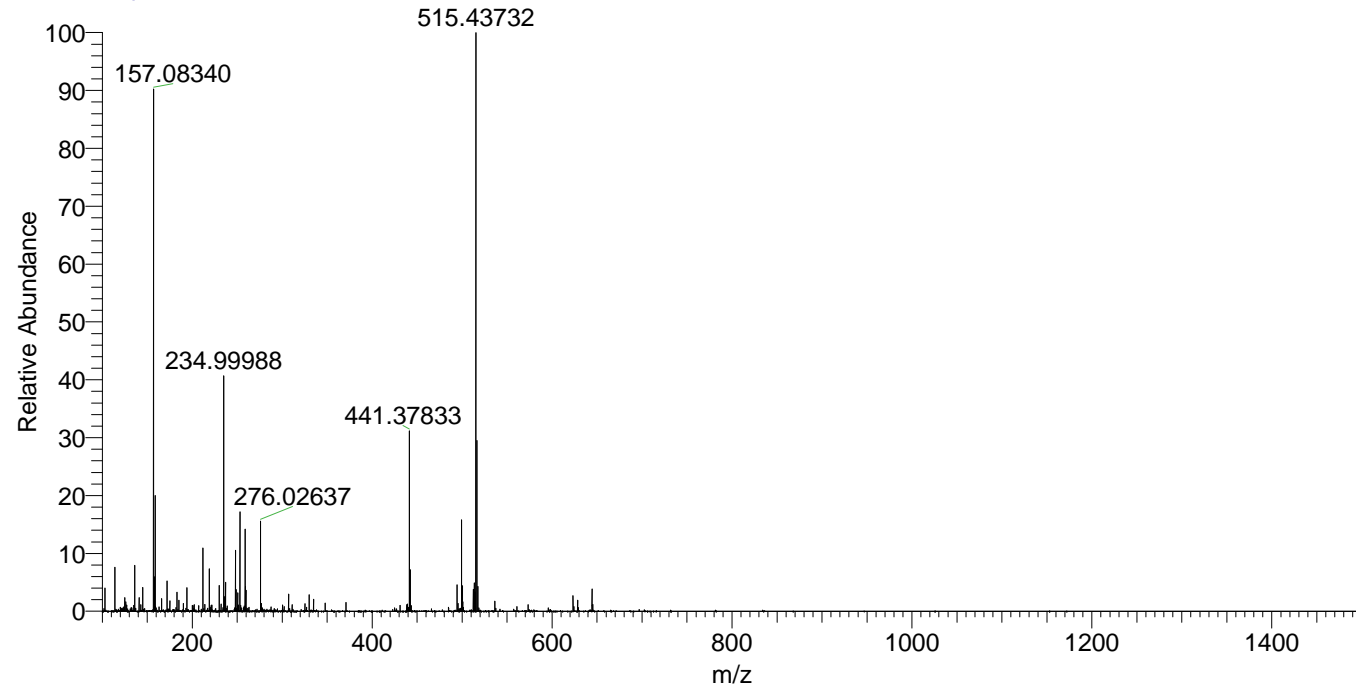
Hcurta_HDX#1392 RT: 8.60
T: FTMS + p ESI Full ms [100.00-1500.00]
m/z= 515.00000-516.00000

m/z	Intensity	Relative	Delta (ppm)	Composition
515.43732	24495678.0	100.00	-0.95	C ₂₆ H ₃₉ ² H ₉ O ₃ N ₇
			2.06	C ₂₆ H ₃₇ ² H ₁₀ O ₃ N ₇
			-3.95	C ₂₆ H ₄₁ ² H ₈ O ₃ N ₇

NL: 2.45E7
Base Peak m/z=
515.43578-515.44094 F:
FTMS + p ESI Full ms
[100.00-1500.00] MS
Hcurta_HDX

NL: 3.67E6
Base Peak m/z=
258.72494-258.72752 F:
FTMS + p ESI Full ms
[100.00-1500.00] MS
Hcurta_HDX

Hcurta_HDX #1392 RT: 8.60 AV: 1 NL: 2.41E7
T: FTMS + p ESI Full ms [100.00-1500.00]



Hcurta_HDX #1392 RT: 8.60 AV: 1 NL: 2.41E7
T: FTMS + p ESI Full ms [100.00-1500.00]

