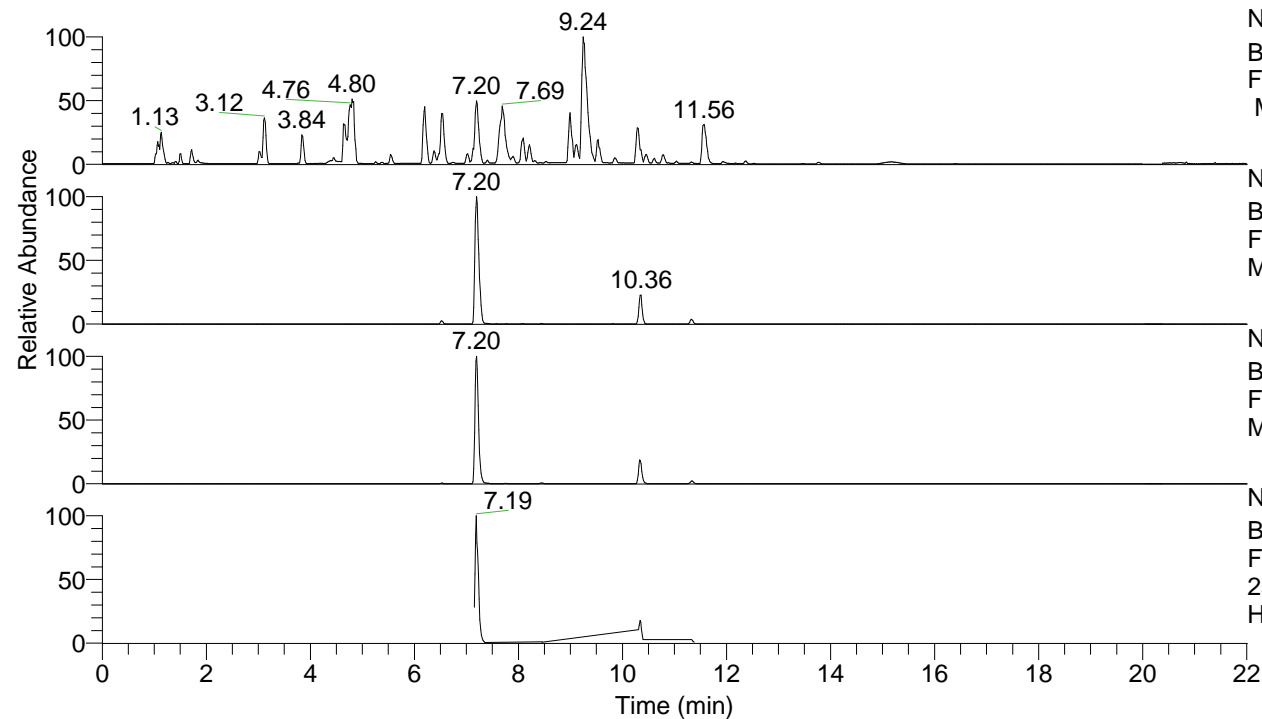


RT: 0.00 - 22.01



NL: 8.52E7
 Base Peak m/z= 100.00000-1500.00000
 F: FTMS + p ESI Full ms [100.00-1500.00]
 MS Hcurta

NL: 4.25E7
 Base Peak m/z= 506.37680-506.38692 F:
 FTMS + p ESI Full ms [100.00-1500.00]
 MS Hcurta

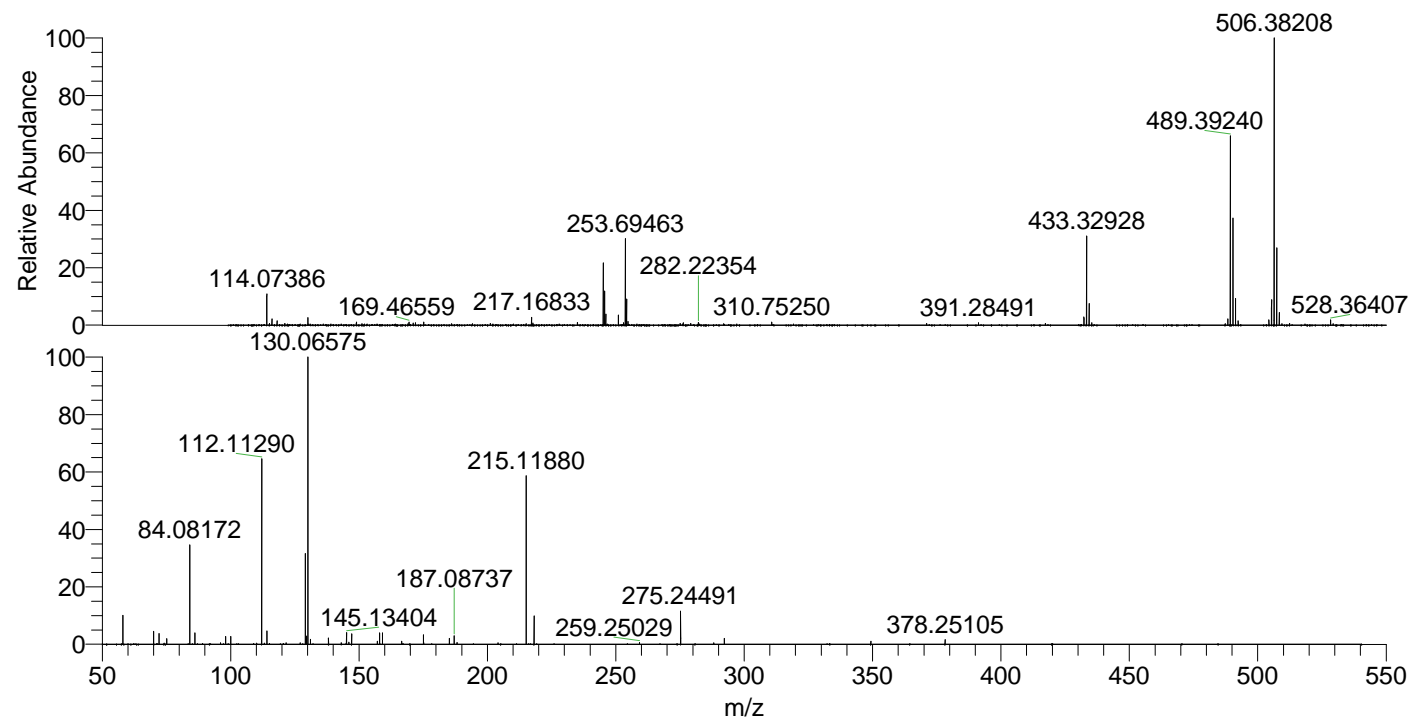
NL: 1.98E7
 Base Peak m/z= 253.69230-253.69738 F:
 FTMS + p ESI Full ms [100.00-1500.00]
 MS Hcurta

NL: 3.78E6
 Base Peak m/z= 50.00000-1500.00000 F:
 FTMS + p ESI d Full ms2
 253.69@hcd35.00 [50.00-535.00] MS
 Hcurta

Hcurta#4140-4162 RT: 10.31-10.37 AV: 5

F: FTMS + p ESI d Full ms2 253.69 ...
 m/z= 50.00000-1000.00000

| m/z | Intensity | Relative |
|-----------|-----------|----------|
| 58.06620 | 48472.1 | 9.82 |
| 70.06610 | 21342.2 | 4.32 |
| 72.08175 | 18139.4 | 3.67 |
| 75.09266 | 9197.2 | 1.86 |
| 84.08172 | 165777.6 | 33.58 |
| 86.06108 | 19113.4 | 3.87 |
| 96.08178 | 2689.9 | 0.54 |
| 98.09736 | 13137.3 | 2.66 |
| 100.07658 | 13014.1 | 2.64 |
| 112.11290 | 307226.4 | 62.23 |
| 114.09214 | 22919.3 | 4.64 |
| 121.61566 | 2638.7 | 0.53 |
| 129.13927 | 154734.5 | 31.34 |
| 129.61315 | 13373.8 | 2.71 |
| 130.06575 | 493711.4 | 100.00 |
| 131.11876 | 8589.1 | 1.74 |
| 138.12622 | 10359.1 | 2.10 |
| 145.13404 | 19509.9 | 3.95 |
| 146.06058 | 3319.5 | 0.67 |
| 147.11352 | 17349.0 | 3.51 |
| 157.13421 | 4805.4 | 0.97 |
| 158.06071 | 19121.4 | 3.87 |
| 159.09223 | 18889.2 | 3.83 |
| 166.65553 | 4990.8 | 1.01 |
| 175.06367 | 15918.3 | 3.22 |
| 185.16541 | 9900.6 | 2.01 |
| 187.08737 | 14080.7 | 2.85 |
| 188.17661 | 3052.2 | 0.62 |
| 204.17217 | 2478.3 | 0.50 |
| 215.11880 | 279120.8 | 56.54 |
| 218.18715 | 47161.2 | 9.55 |
| 259.25029 | 3027.2 | 0.61 |
| 275.24491 | 54699.3 | 11.08 |
| 288.17098 | 2669.0 | 0.54 |
| 292.27196 | 9637.0 | 1.95 |
| 349.32961 | 4771.2 | 0.97 |
| 378.25105 | 7494.9 | 1.52 |



NL: 9.67E6
 Hcurta#4159 RT: 10.36
 AV: 1 T: FTMS + p ESI
 Full lock ms
 [100.00-1500.00]

NL: 4.75E5
 Hcurta#4139-4163 RT:
 10.31-10.37 AV: 5 F:
 FTMS + p ESI d Full ms2
 253.69@hcd35.00
 [50.00-535.00]