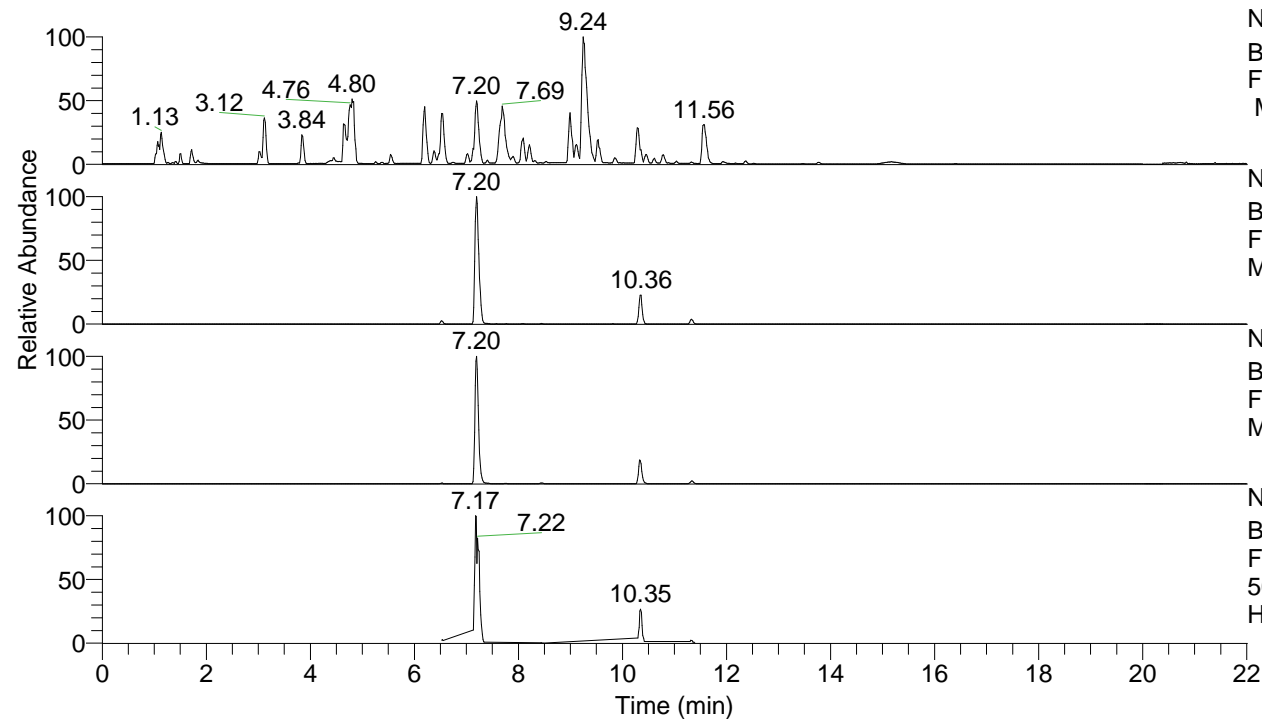


RT: 0.00 - 22.01



NL: 8.52E7  
 Base Peak m/z= 100.00000-1500.00000  
 F: FTMS + p ESI Full ms [100.00-1500.00]  
 MS Hcurta

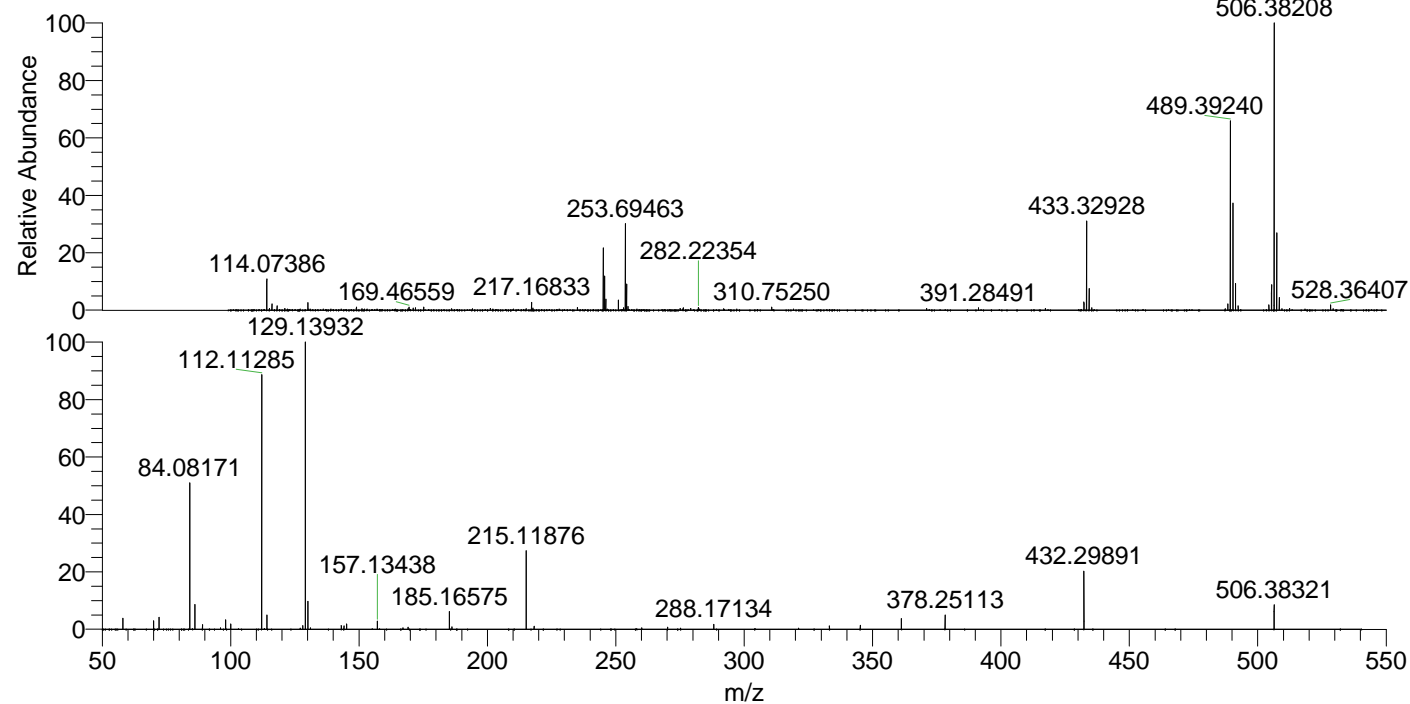
NL: 4.25E7  
 Base Peak m/z= 506.37680-506.38692 F:  
 FTMS + p ESI Full ms [100.00-1500.00]  
 MS Hcurta

NL: 1.98E7  
 Base Peak m/z= 253.69230-253.69738 F:  
 FTMS + p ESI Full ms [100.00-1500.00]  
 MS Hcurta

NL: 6.62E6  
 Base Peak m/z= 50.00000-1500.00000 F:  
 FTMS + p ESI d Full ms2  
 506.38@hcd35.00 [50.00-535.00] MS  
 Hcurta

Hcurta#4138-4172 RT: 10.31-10.39 AV: 7  
 F: FTMS + p ESI d Full ms2 506.38@h ...  
 m/z= 50.00000-1000.00000

m/z	Intensity	Relative
58.06617	41244.9	3.92
70.06612	32750.7	3.12
72.08175	43379.6	4.13
84.08171	553300.1	52.64
86.06098	91412.4	8.70
89.10823	17282.7	1.64
98.09734	34767.6	3.31
100.07660	19730.3	1.88
112.07674	15300.2	1.46
112.11285	935404.0	88.98
114.09226	51920.2	4.94
128.10775	13893.3	1.32
129.13932	1051196.3	100.00
130.06574	103076.2	9.81
131.11845	5940.5	0.57
143.11849	13076.1	1.24
144.12628	13044.1	1.24
145.13433	19353.5	1.84
157.13438	29411.4	2.80
167.15484	5671.6	0.54
169.13415	7497.3	0.71
185.16575	65929.0	6.27
186.19763	9588.8	0.91
215.11876	288448.6	27.44
218.18698	11382.7	1.08
270.16072	7961.3	0.76
288.17134	18128.2	1.72
333.19311	12051.4	1.15
345.22980	15451.7	1.47
361.22506	39632.7	3.77
378.25113	53400.2	5.08
432.29891	213605.0	20.32
506.38321	91055.4	8.66



NL: 9.67E6  
 Hcurta#4159 RT: 10.36  
 AV: 1 T: FTMS + p ESI  
 Full lock ms  
 [100.00-1500.00]

NL: 1.05E6  
 Hcurta#4137-4174 RT:  
 10.31-10.39 AV: 7 F:  
 FTMS + p ESI d Full ms2  
 506.38@hcd35.00  
 [50.00-535.00]