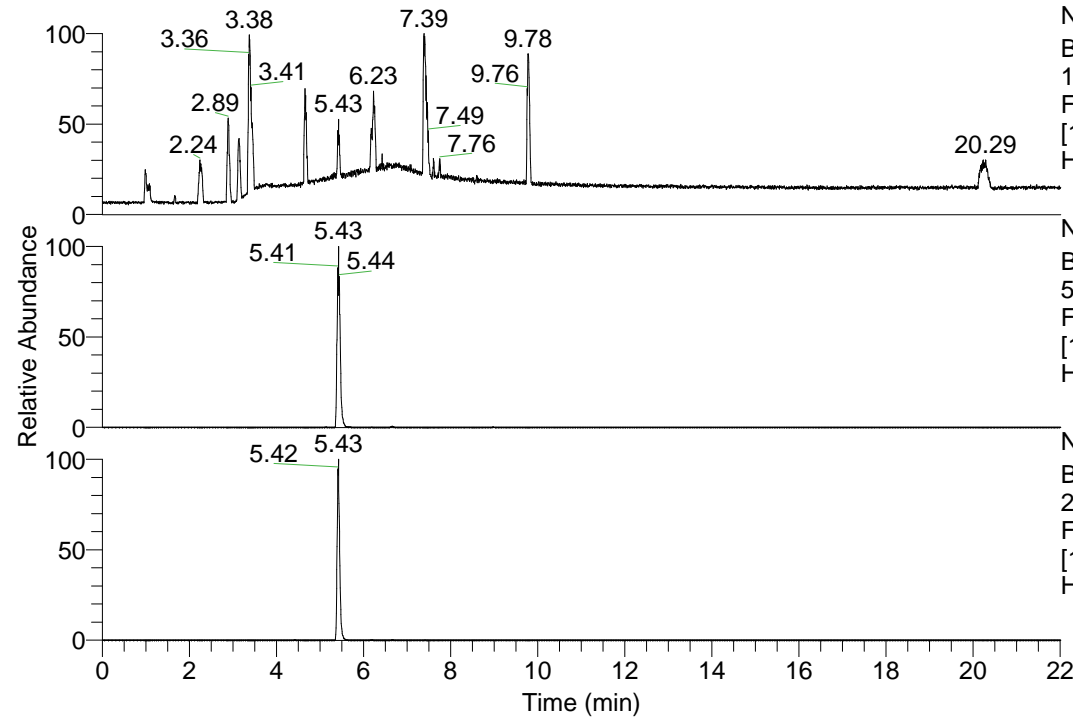


RT: 0.00 - 22.01



NL: 1.13E8  
 Base Peak m/z=  
 100.00000-1500.00000 F:  
 FTMS + p ESI Full ms  
 [100.00-1500.00] MS  
 Hcurta\_HDX

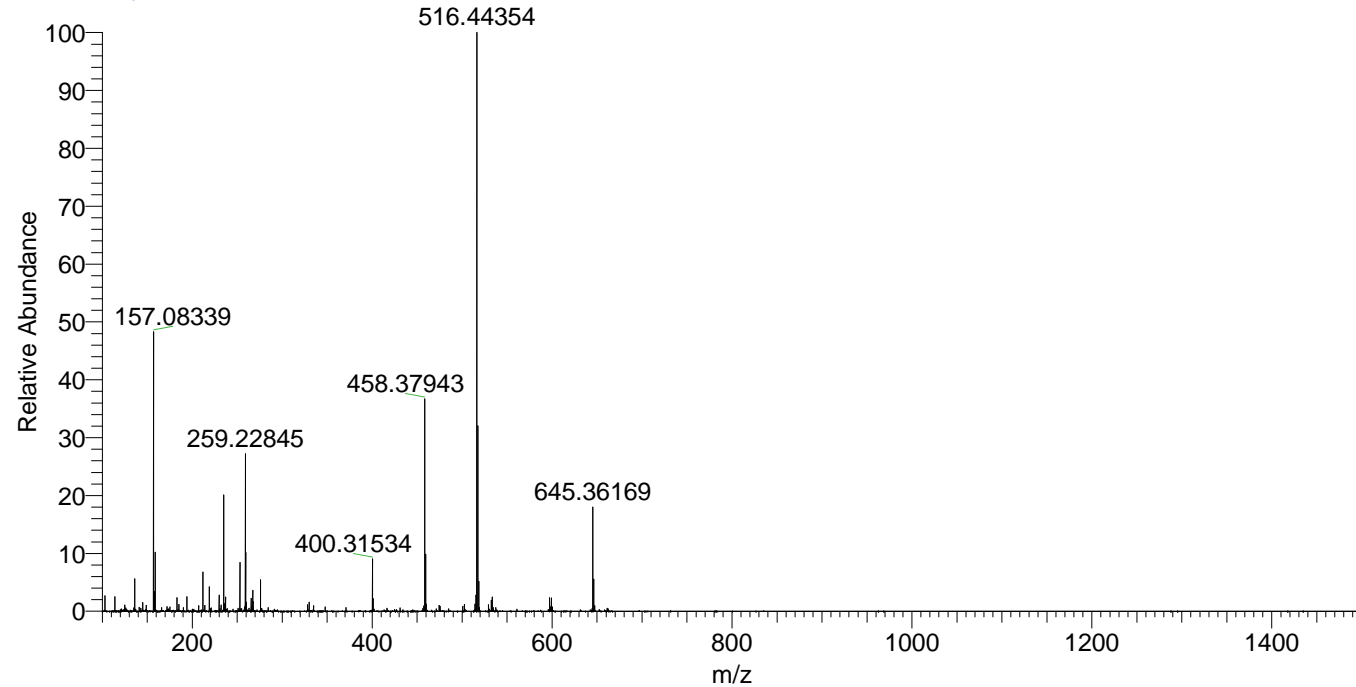
NL: 5.95E7  
 Base Peak m/z=  
 516.44205-516.44721 F:  
 FTMS + p ESI Full ms  
 [100.00-1500.00] MS  
 Hcurta\_HDX

NL: 1.60E7  
 Base Peak m/z=  
 259.22807-259.23067 F:  
 FTMS + p ESI Full ms  
 [100.00-1500.00] MS  
 Hcurta\_HDX

Hcurta\_HDX#861 RT: 5.43  
 T: FTMS + p ESI Full ms [100.00-1500.00]  
 m/z= 516.00000-517.00000

m/z	Intensity	Relative	Delta (ppm)	Composition
516.44354	46993892.0	100.00	-1.05	C <sub>26</sub> H <sub>38</sub> <sup>2</sup> H <sub>10</sub> O <sub>3</sub> N <sub>7</sub>
			1.95	C <sub>26</sub> H <sub>36</sub> <sup>2</sup> H <sub>11</sub> O <sub>3</sub> N <sub>7</sub>
			-4.04	C <sub>26</sub> H <sub>40</sub> <sup>2</sup> H <sub>9</sub> O <sub>3</sub> N <sub>7</sub>
			4.95	C <sub>26</sub> H <sub>34</sub> <sup>2</sup> H <sub>12</sub> O <sub>3</sub> N <sub>7</sub>

Hcurta\_HDX #861 RT: 5.43 AV: 1 NL: 4.60E7  
 T: FTMS + p ESI Full ms [100.00-1500.00]



Hcurta\_HDX #861 RT: 5.43 AV: 1 NL: 4.60E7  
 T: FTMS + p ESI Full ms [100.00-1500.00]

