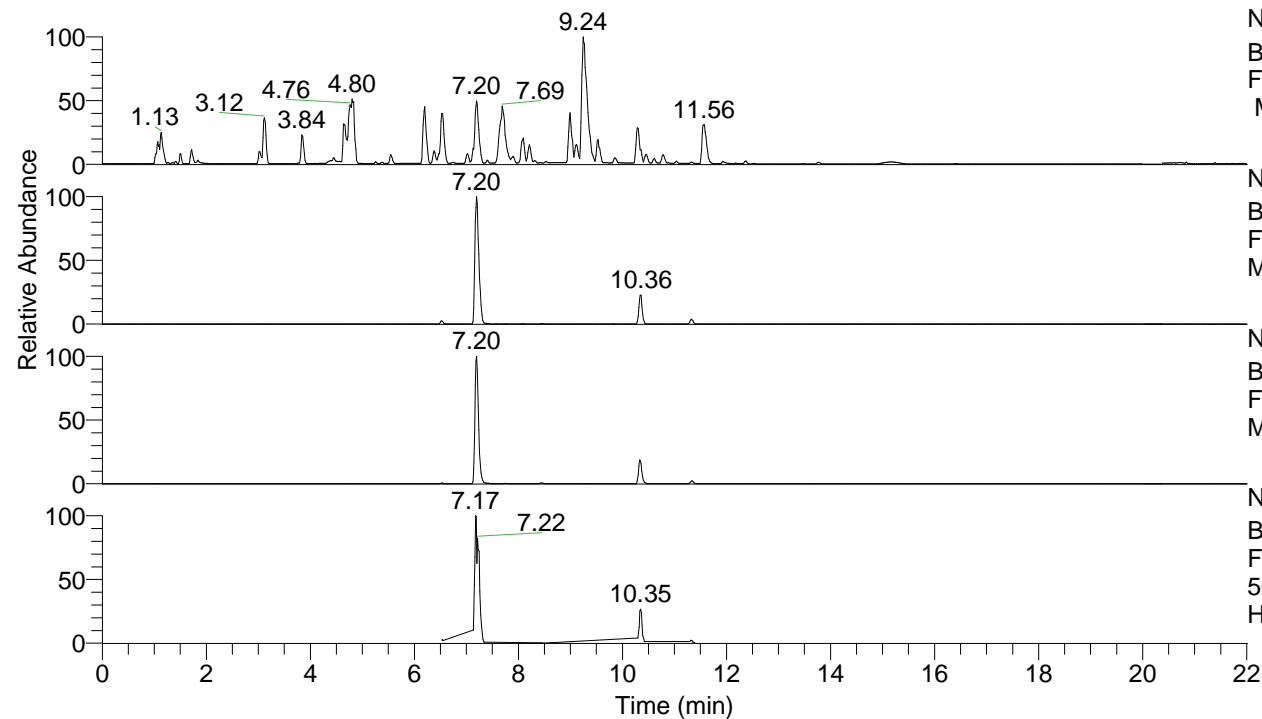


RT: 0.00 - 22.01



NL: 8.52E7
 Base Peak m/z= 100.00000-1500.00000
 F: FTMS + p ESI Full ms [100.00-1500.00]
 MS Hcurta

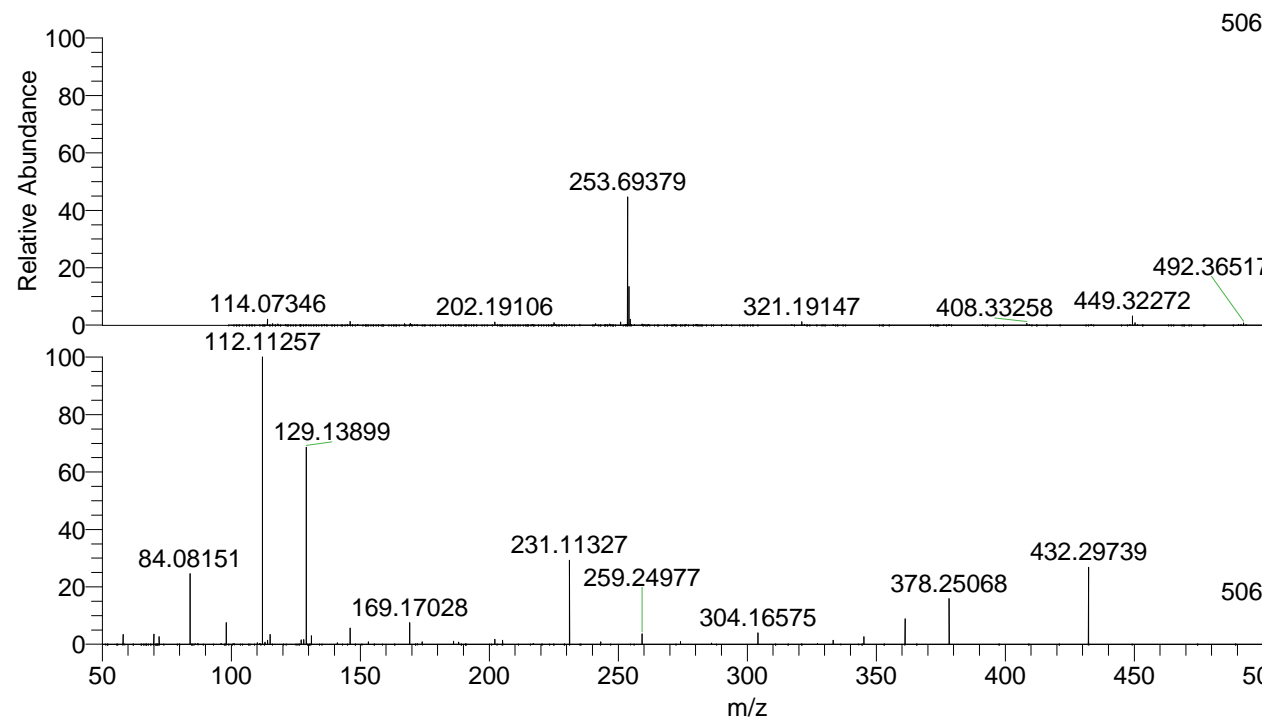
NL: 4.25E7
 Base Peak m/z= 506.37680-506.38692 F:
 FTMS + p ESI Full ms [100.00-1500.00]
 MS Hcurta

NL: 1.98E7
 Base Peak m/z= 253.69230-253.69738 F:
 FTMS + p ESI Full ms [100.00-1500.00]
 MS Hcurta

NL: 6.62E6
 Base Peak m/z= 50.00000-1500.00000 F:
 FTMS + p ESI d Full ms2
 506.38@hcd35.00 [50.00-535.00] MS
 Hcurta

Hcurta#2866-2912 RT: 7.15-7.26 AV: 9
 F: FTMS + p ESI d Full ms2 506.38@h ...
 m/z= 50.00000-1000.00000

m/z	Intensity	Relative
58.06605	159811.2	3.49
70.06596	166376.8	3.63
72.08161	120611.0	2.63
84.08151	1161417.3	25.34
98.09705	340203.5	7.42
112.11257	4583472.5	100.00
113.10771	30751.6	0.67
114.09192	63249.2	1.38
115.12340	153697.2	3.35
127.12341	68300.3	1.49
128.10753	73836.8	1.61
129.13899	3116682.8	68.00
131.11833	139357.8	3.04
141.13894	25216.7	0.55
146.06025	257597.4	5.62
153.13880	41594.5	0.91
169.17028	346311.8	7.56
174.05541	37465.4	0.82
186.19695	48456.9	1.06
188.17583	34170.4	0.75
202.19210	78958.4	1.72
205.20274	66316.0	1.45
231.11327	1353018.4	29.52
243.25524	38076.3	0.83
259.24977	166512.8	3.63
274.15544	43250.3	0.94
304.16575	180289.5	3.93
333.33463	61366.9	1.34
345.22867	122671.4	2.68
361.22363	409721.8	8.94
378.25068	727426.3	15.87
432.29739	1227518.0	26.78
506.38257	591415.9	12.90



NL: 4.24E7
 Hcurta#2887 RT: 7.20
 AV: 1 T: FTMS + p ESI
 Full ms [100.00-1500.00]

NL: 4.54E6
 Hcurta#2863-2917 RT:
 7.15-7.26 AV: 9 F: FTMS
 + p ESI d Full ms2
 506.38@hcd35.00
 [50.00-535.00]