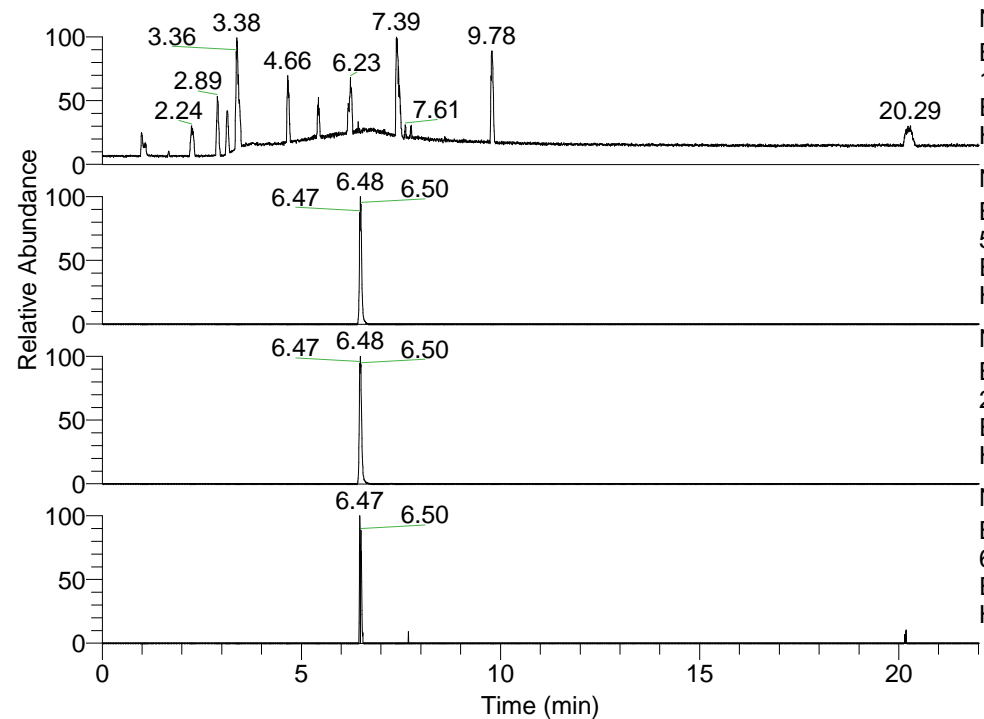


RT: 0.00 - 22.01



NL: 1.13E8
 Base Peak m/z=
 100.00000-1500.00000 F: FTMS + p
 ESI Full ms [100.00-1500.00] MS
 Hcurta_HDX

NL: 3.97E6
 Base Peak m/z=
 511.42172-511.42684 F: FTMS + p
 ESI Full ms [100.00-1500.00] MS
 Hcurta_HDX

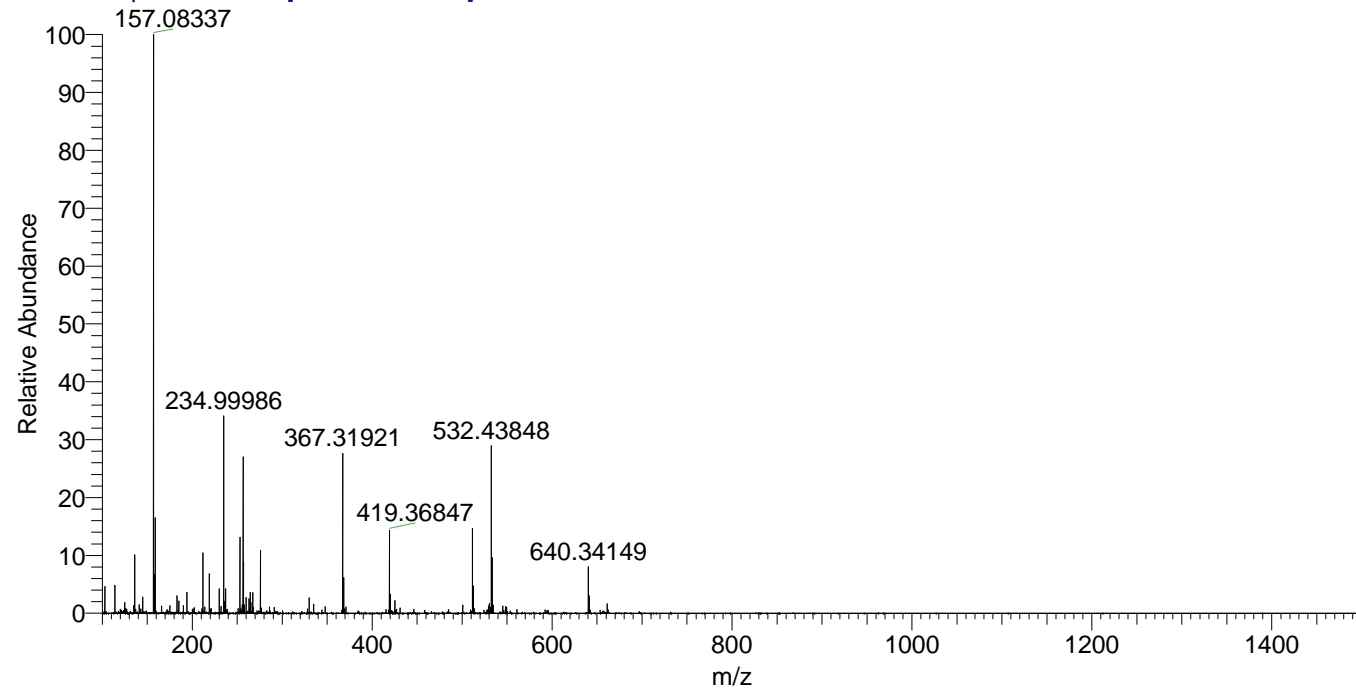
NL: 7.30E6
 Base Peak m/z=
 256.71791-256.72047 F: FTMS + p
 ESI Full ms [100.00-1500.00] MS
 Hcurta_HDX

NL: 6.12E4
 Base Peak m/z=
 626.42029-626.42655 F: FTMS + p
 ESI Full ms [100.00-1500.00] MS
 Hcurta_HDX

Hcurta_HDX#1037 RT: 6.48
 T: FTMS + p ESI Full ms [100.00-1500.00]
 m/z= 511.00000-512.00000

m/z	Intensity	Relative	Delta (ppm)	Composition
511.42337	3970057.0	100.00	-0.70	C ₂₇ H ₄₃ ² H ₆ O ₃ N ₆
			2.33	C ₂₇ H ₄₁ ² H ₇ O ₃ N ₆
			-3.72	C ₂₇ H ₄₅ ² H ₅ O ₃ N ₆

Hcurta_HDX #1037 RT: 6.48 AV: 1 NL: 2.69E7
 T: FTMS + p ESI Full ms [100.00-1500.00]



Hcurta_HDX #1037 RT: 6.48 AV: 1 NL: 3.95E6
 T: FTMS + p ESI Full ms [100.00-1500.00]

