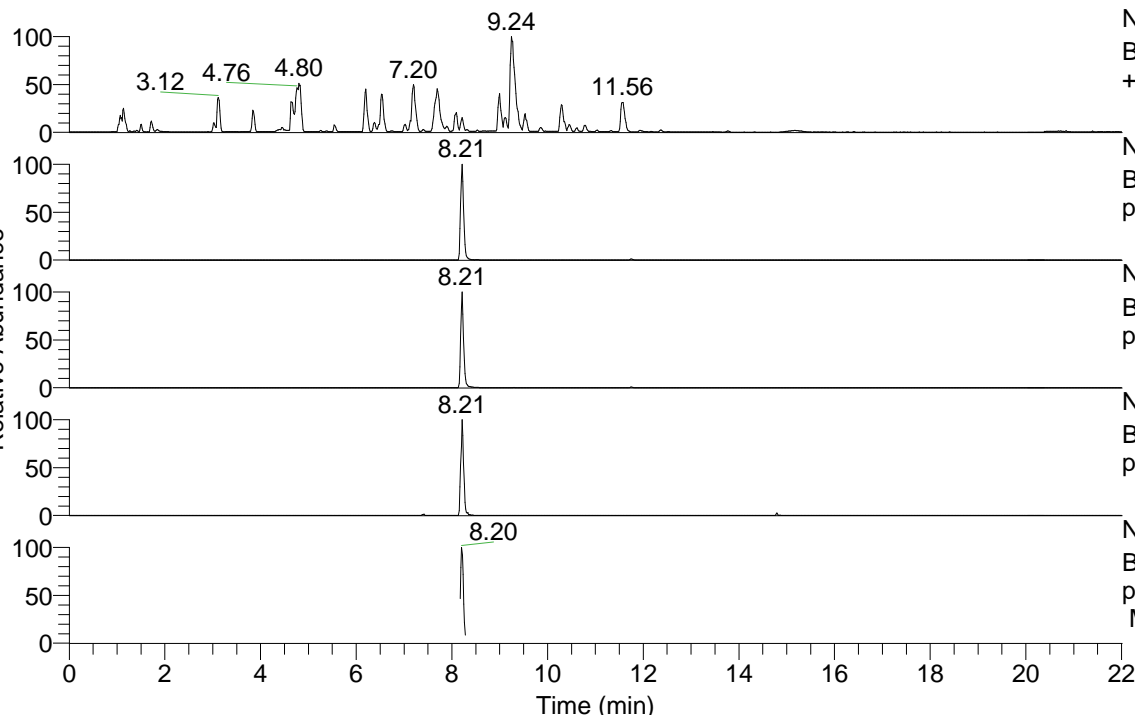


RT: 0.00 - 22.01



NL: 8.52E7
 Base Peak m/z= 100.00000-1500.00000 F: FTMS + p ESI Full ms [100.00-1500.00] MS Hcurta

NL: 1.32E7
 Base Peak m/z= 505.38156-505.39166 F: FTMS + p ESI Full ms [100.00-1500.00] MS Hcurta

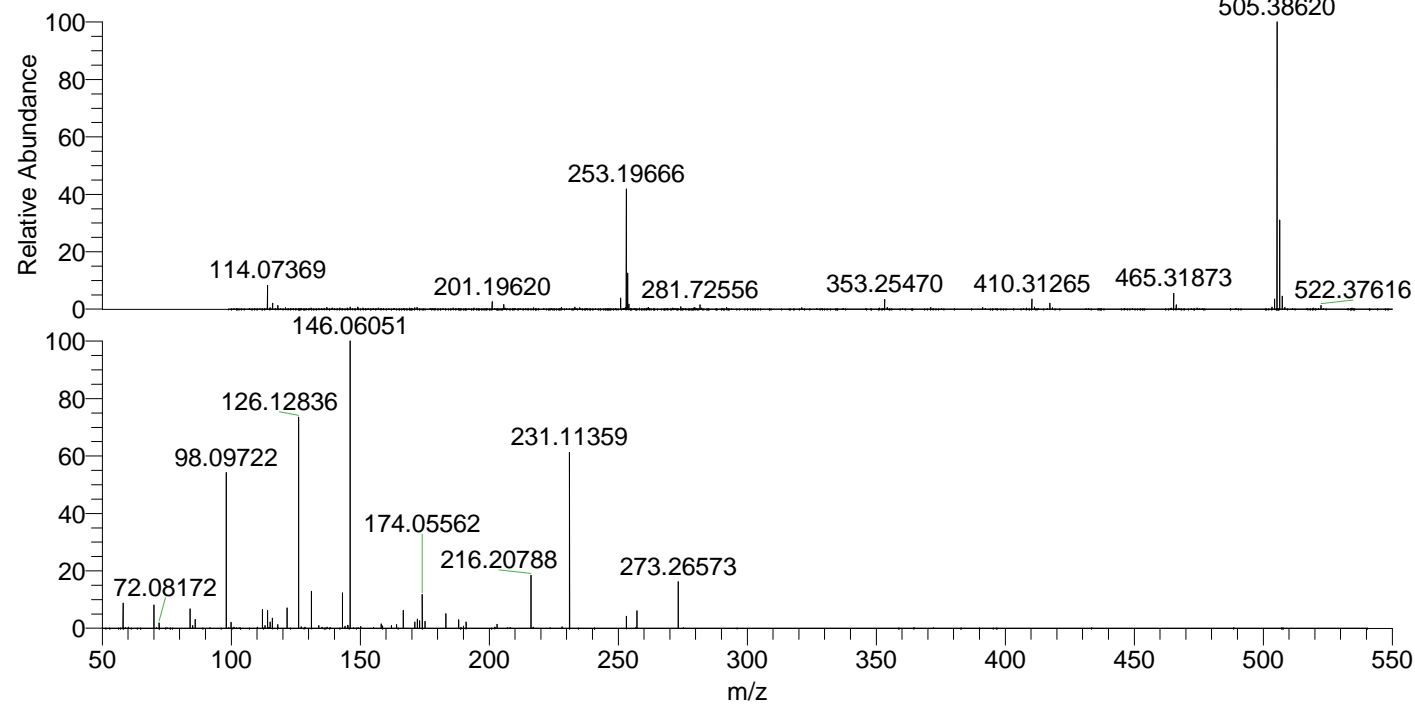
NL: 5.77E6
 Base Peak m/z= 253.19469-253.19975 F: FTMS + p ESI Full ms [100.00-1500.00] MS Hcurta

NL: 2.11E5
 Base Peak m/z= 619.37329-619.38567 F: FTMS + p ESI Full ms [100.00-1500.00] MS Hcurta

NL: 8.24E5
 Base Peak m/z= 50.00000-1500.00000 F: FTMS + p ESI d Full ms2 253.20@hcd35.00 [50.00-535.00] MS Hcurta

Hcurta#3281-3309 RT: 8.18-8.25 AV: 6
 F: FTMS + p ESI d Full ms2 253.20 ...
 m/z= 50.00000-1000.00000

m/z	Intensity	Relative
58.06616	50837.7	9.11
70.06606	46105.6	8.26
72.08172	10511.8	1.88
84.08166	39278.7	7.04
85.07681	5600.7	1.00
86.06085	12066.4	2.16
86.09726	17105.6	3.06
98.09722	302042.7	54.10
99.98780	11358.9	2.03
112.11277	36766.2	6.59
113.10791	5568.5	1.00
114.09198	34684.4	6.21
115.12358	12432.1	2.23
115.96472	19695.4	3.53
117.99828	7162.1	1.28
121.63388	39457.6	7.07
126.12836	417789.3	74.83
131.11840	73814.6	13.22
133.97512	5520.8	0.99
143.15479	70745.6	12.67
144.14442	4070.4	0.73
145.05270	5988.5	1.07
145.17033	4991.8	0.89
146.06051	558300.4	100.00
150.16268	3261.7	0.58
158.16018	8862.0	1.59
158.67598	4778.2	0.86
162.05557	5381.7	0.96
164.07116	7303.0	1.31
166.67336	34597.4	6.20
171.18637	12245.6	2.19
172.18128	17946.7	3.21
173.04780	14480.8	2.59
174.05562	67851.5	12.15
175.08734	13235.3	2.37
183.18628	28049.1	5.02
188.17633	16263.7	2.91
190.05001	4206.5	0.75
191.05855	12015.3	2.15
191.08208	6884.3	1.23
203.08221	7875.2	1.41
216.20788	103258.3	18.50
231.11359	353911.8	63.39
253.19755	23470.7	4.20
257.27076	34610.8	6.20
273.26573	90826.4	16.27



NL: 1.30E7
 Hcurta#3295 RT: 8.21
 AV: 1 T: FTMS + p ESI
 Full lock ms
 [100.00-1500.00]

NL: 5.57E5
 Hcurta#3281-3309 RT:
 8.18-8.25 AV: 6 F: FTMS
 + p ESI d Full ms2
 253.20@hcd35.00
 [50.00-535.00]