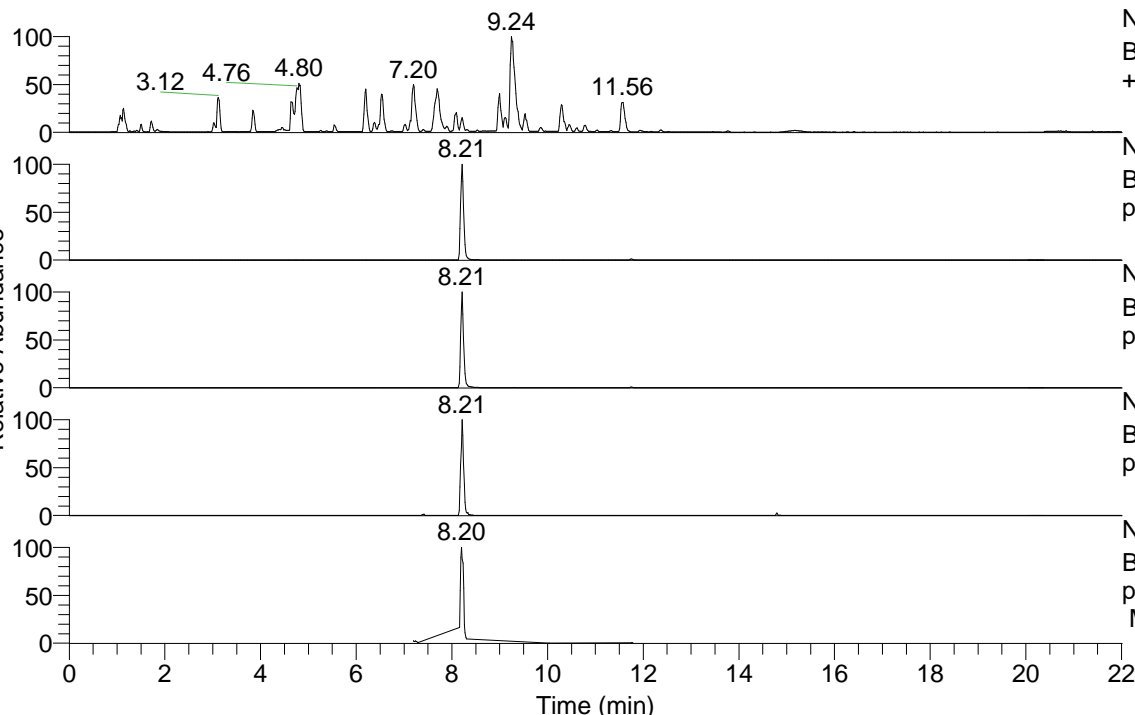


RT: 0.00 - 22.01



NL: 8.52E7  
 Base Peak m/z= 100.00000-1500.00000 F: FTMS + p ESI Full ms [100.00-1500.00] MS Hcurta

NL: 1.32E7  
 Base Peak m/z= 505.38156-505.39166 F: FTMS + p ESI Full ms [100.00-1500.00] MS Hcurta

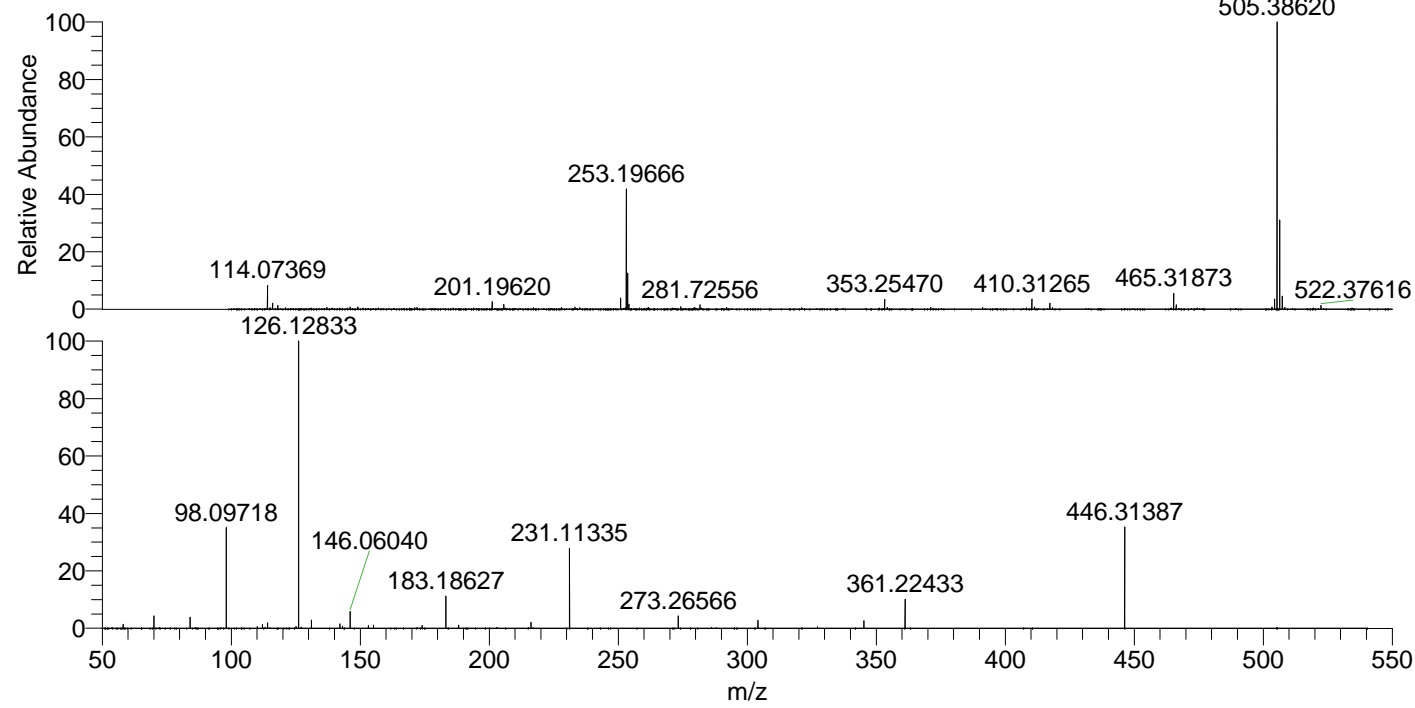
NL: 5.77E6  
 Base Peak m/z= 253.19469-253.19975 F: FTMS + p ESI Full ms [100.00-1500.00] MS Hcurta

NL: 2.11E5  
 Base Peak m/z= 619.37329-619.38567 F: FTMS + p ESI Full ms [100.00-1500.00] MS Hcurta

NL: 3.47E6  
 Base Peak m/z= 50.00000-1500.00000 F: FTMS + p ESI d Full ms2 505.35@hcd35.00 [50.00-535.00] MS Hcurta

Hcurta#3275-3314 RT: 8.16-8.26 AV: 8  
 F: FTMS + p ESI d Full ms2 505.35@hcd35.00 [50.00-535.00] MS Hcurta  
 m/z= 50.00000-1000.00000

m/z	Intensity	Relative
58.06606	30166.6	1.46
70.06608	90556.5	4.37
84.08161	80523.9	3.89
98.09718	710950.8	34.31
110.09702	12904.5	0.62
112.11266	25694.7	1.24
114.09204	37862.4	1.83
125.12051	12682.2	0.61
126.12833	2072048.4	100.00
131.11844	58655.9	2.83
142.12313	30554.2	1.47
143.15476	16238.8	0.78
146.06040	118556.7	5.72
153.13910	20827.9	1.01
155.15500	21052.7	1.02
174.05573	20727.4	1.00
183.18627	228125.5	11.01
188.17669	20729.5	1.00
216.20788	42045.6	2.03
231.11335	575653.6	27.78
273.26566	87808.5	4.24
304.16583	56222.4	2.71
345.22853	53375.1	2.58
361.22433	204240.2	9.86
446.31387	732486.5	35.35



NL: 1.30E7  
 Hcurta#3295 RT: 8.21  
 AV: 1 T: FTMS + p ESI  
 Full lock ms  
 [100.00-1500.00]

NL: 2.03E6  
 Hcurta#3273-3316 RT:  
 8.16-8.26 AV: 8 F: FTMS  
 + p ESI d Full ms2  
 505.35@hcd35.00  
 [50.00-535.00]