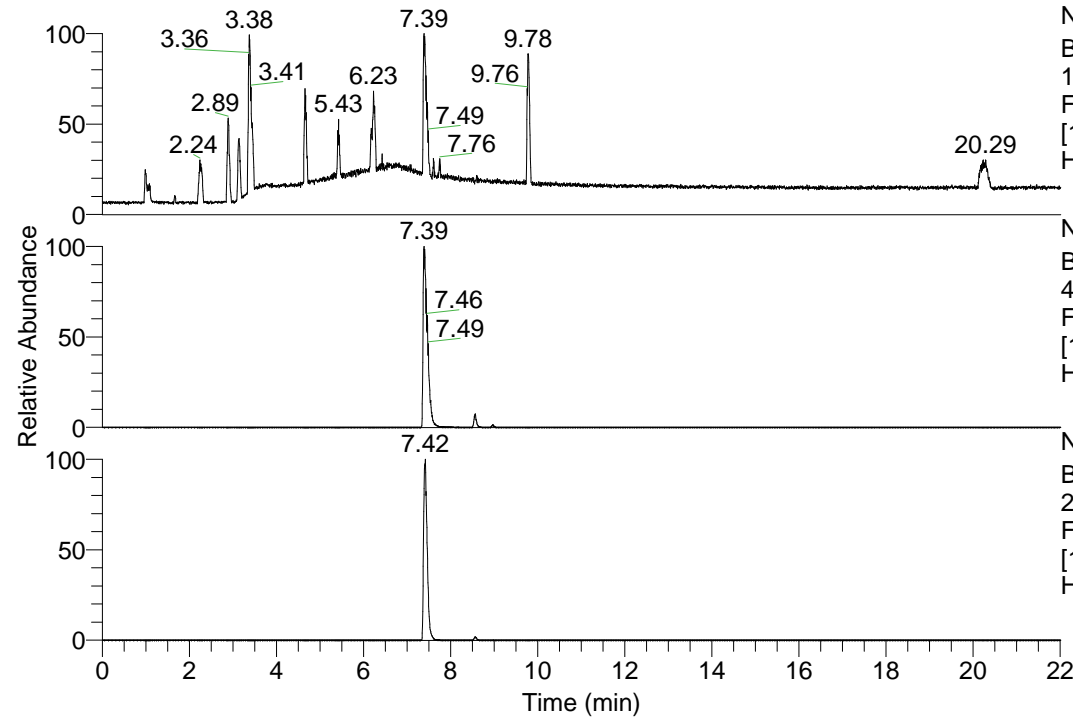


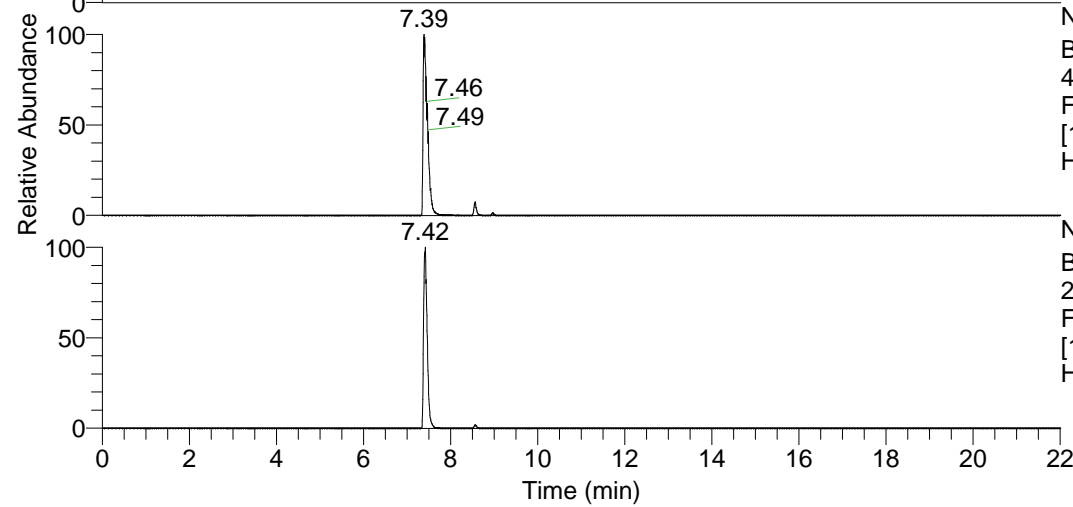
RT: 0.00 - 22.01



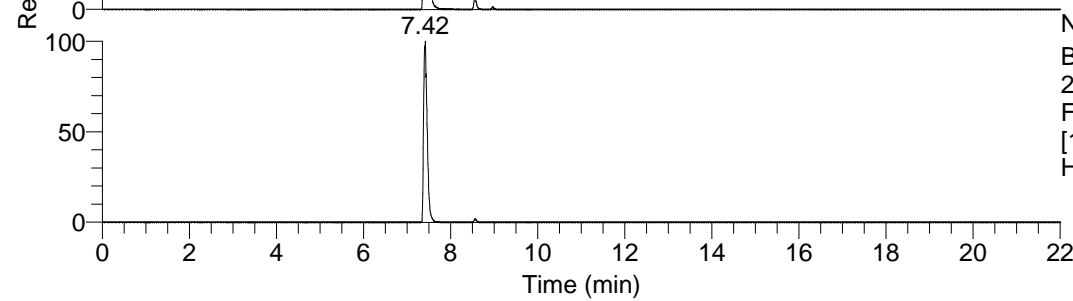
NL: 1.13E8
 Base Peak m/z=
 100.00000-1500.00000 F:
 FTMS + p ESI Full ms
 [100.00-1500.00] MS
 Hcurta_HDX

Hcurta_HDX#1189 RT: 7.39
 T: FTMS + p ESI Full ms [100.00-1500.00]
 m/z= 499.00000-500.00000

m/z	Intensity	Relative	Delta (ppm)	Composition
499.44214	112969936.0	100.00	-1.51	C ₂₆ H ₃₉ ² H ₉ O ₂ N ₇
			1.59	C ₂₆ H ₃₇ ² H ₁₀ O ₂ N ₇
			-4.61	C ₂₆ H ₄₁ ² H ₈ O ₂ N ₇
			4.69	C ₂₆ H ₃₅ ² H ₁₁ O ₂ N ₇

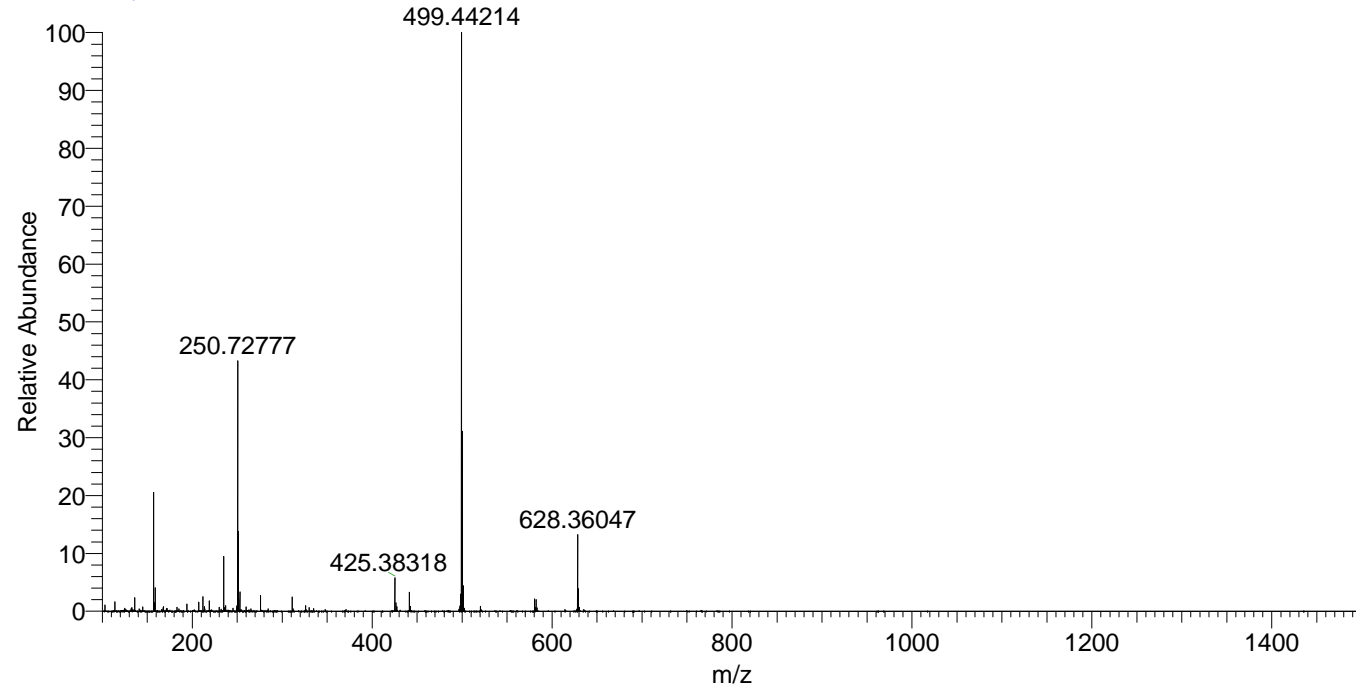


NL: 1.13E8
 Base Peak m/z=
 499.44094-499.44594 F:
 FTMS + p ESI Full ms
 [100.00-1500.00] MS
 Hcurta_HDX



NL: 6.07E7
 Base Peak m/z=
 250.72752-250.73002 F:
 FTMS + p ESI Full ms
 [100.00-1500.00] MS
 Hcurta_HDX

Hcurta_HDX #1189 RT: 7.39 AV: 1 NL: 1.10E8
 T: FTMS + p ESI Full ms [100.00-1500.00]



Hcurta_HDX #1189 RT: 7.39 AV: 1 NL: 1.10E8
 T: FTMS + p ESI Full ms [100.00-1500.00]

