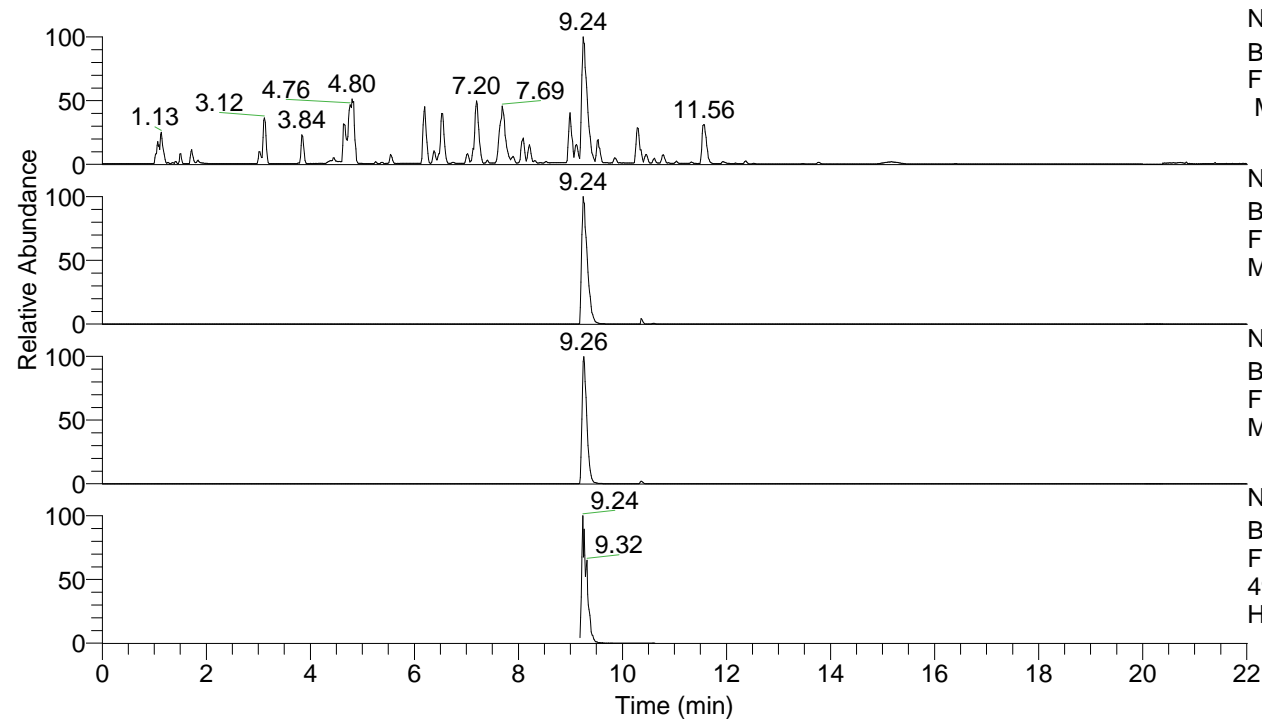


RT: 0.00 - 22.01



NL: 8.52E7  
 Base Peak m/z= 100.00000-1500.00000  
 F: FTMS + p ESI Full ms [100.00-1500.00]  
 MS Hcurta

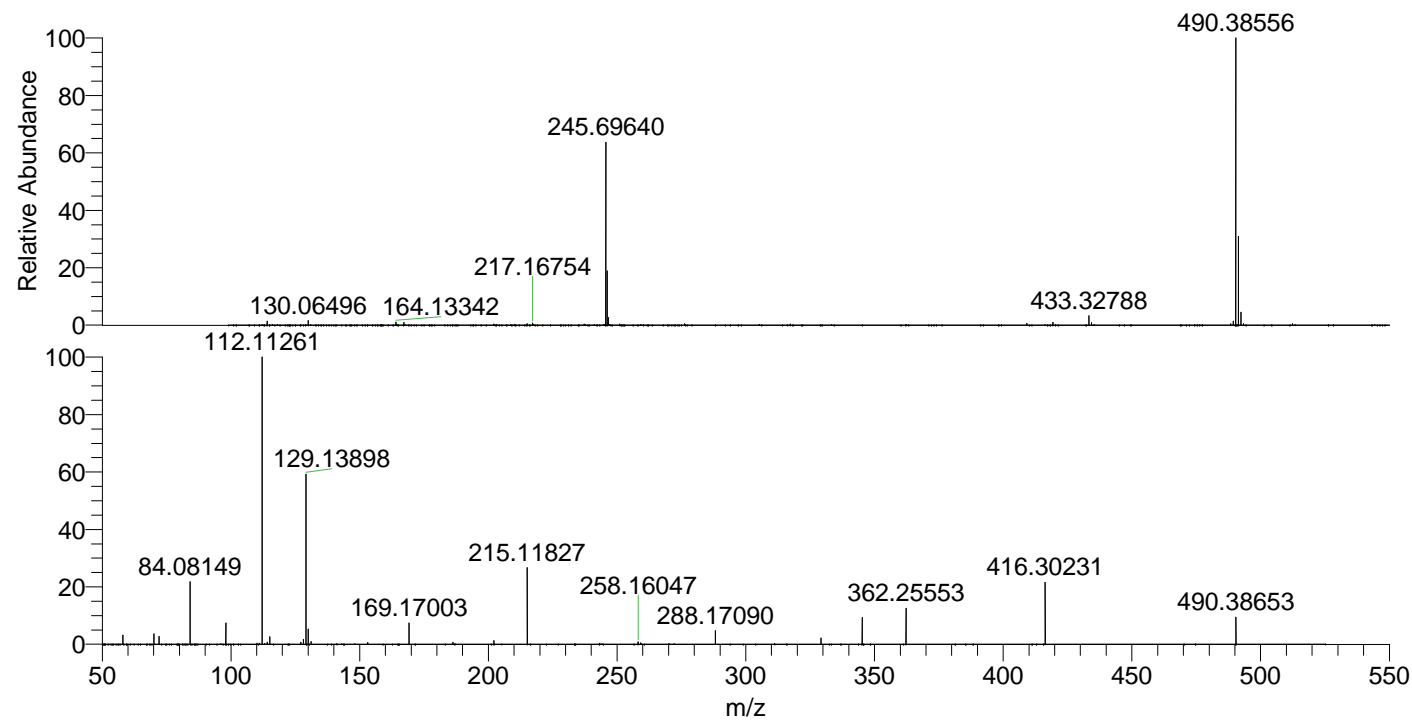
NL: 8.52E7  
 Base Peak m/z= 490.38205-490.39185 F:  
 FTMS + p ESI Full ms [100.00-1500.00]  
 MS Hcurta

NL: 5.71E7  
 Base Peak m/z= 245.69493-245.69985 F:  
 FTMS + p ESI Full ms [100.00-1500.00]  
 MS Hcurta

NL: 1.99E7  
 Base Peak m/z= 50.00000-1500.00000 F:  
 FTMS + p ESI d Full ms2  
 490.39@hcd35.00 [50.00-520.00] MS  
 Hcurta

Hcurta#3692-3746 RT: 9.21-9.33 AV: 10  
 F: FTMS + p ESI d Full ms2 490.39@hc ...  
 m/z= 50.00000-1000.00000

m/z	Intensity	Relative
58.06601	389694.9	3.26
70.06596	445870.7	3.72
72.08161	335911.3	2.81
84.08149	2651553.3	22.15
98.09709	898094.7	7.50
112.11261	11971729.0	100.00
114.09184	88403.4	0.74
115.12344	316915.9	2.65
127.12326	92256.2	0.77
128.10723	208583.7	1.74
129.13898	7243334.0	60.50
130.06548	656900.5	5.49
131.11814	118130.2	0.99
153.13876	77530.6	0.65
169.17003	897193.5	7.49
186.19669	80157.0	0.67
202.19174	160294.9	1.34
215.11827	3200943.0	26.74
258.16047	96173.0	0.80
259.24980	65168.4	0.54
288.17090	574046.3	4.80
329.23406	268902.8	2.25
345.22864	1118868.4	9.35
362.25553	1510769.5	12.62
416.30231	2582218.5	21.57
490.38653	1148023.0	9.59



NL: 8.23E7  
 Hcurta#3709 RT: 9.24  
 AV: 1 T: FTMS + p ESI  
 Full ms [100.00-1500.00]

NL: 1.20E7  
 Hcurta#3689-3751 RT:  
 9.21-9.33 AV: 10 F:  
 FTMS + p ESI d Full ms2  
 490.39@hcd35.00  
 [50.00-520.00]