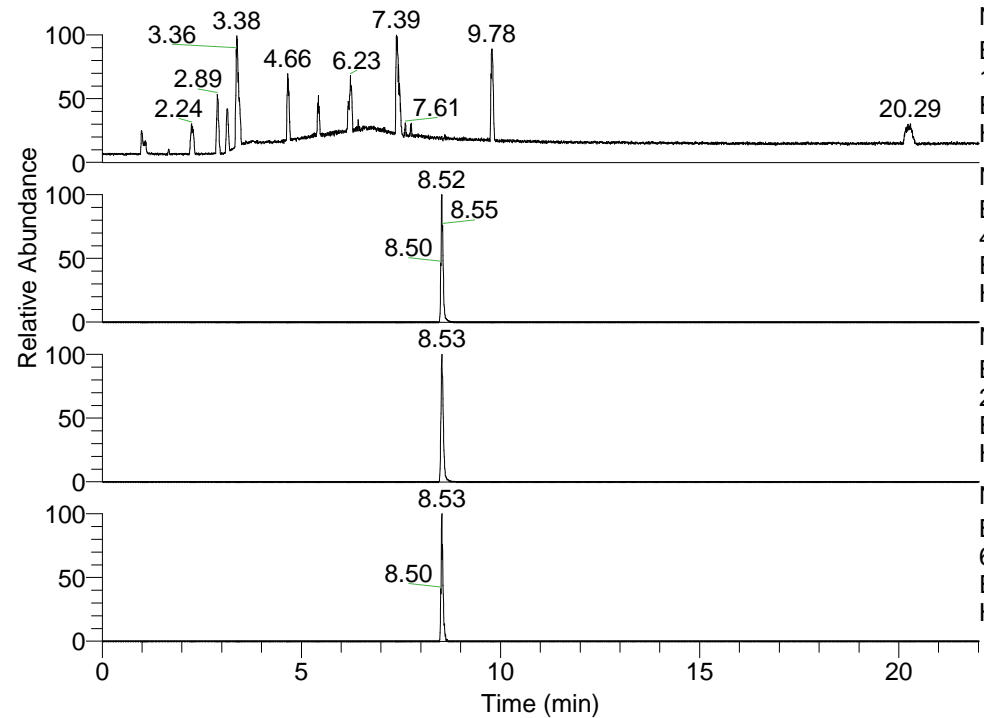


RT: 0.00 - 22.01



NL: 1.13E8  
 Base Peak m/z=  
 100.00000-1500.00000 F: FTMS + p  
 ESI Full ms [100.00-1500.00] MS  
 Hcurta\_HDX

NL: 1.44E7  
 Base Peak m/z=  
 494.42061-494.42555 F: FTMS + p  
 ESI Full ms [100.00-1500.00] MS  
 Hcurta\_HDX

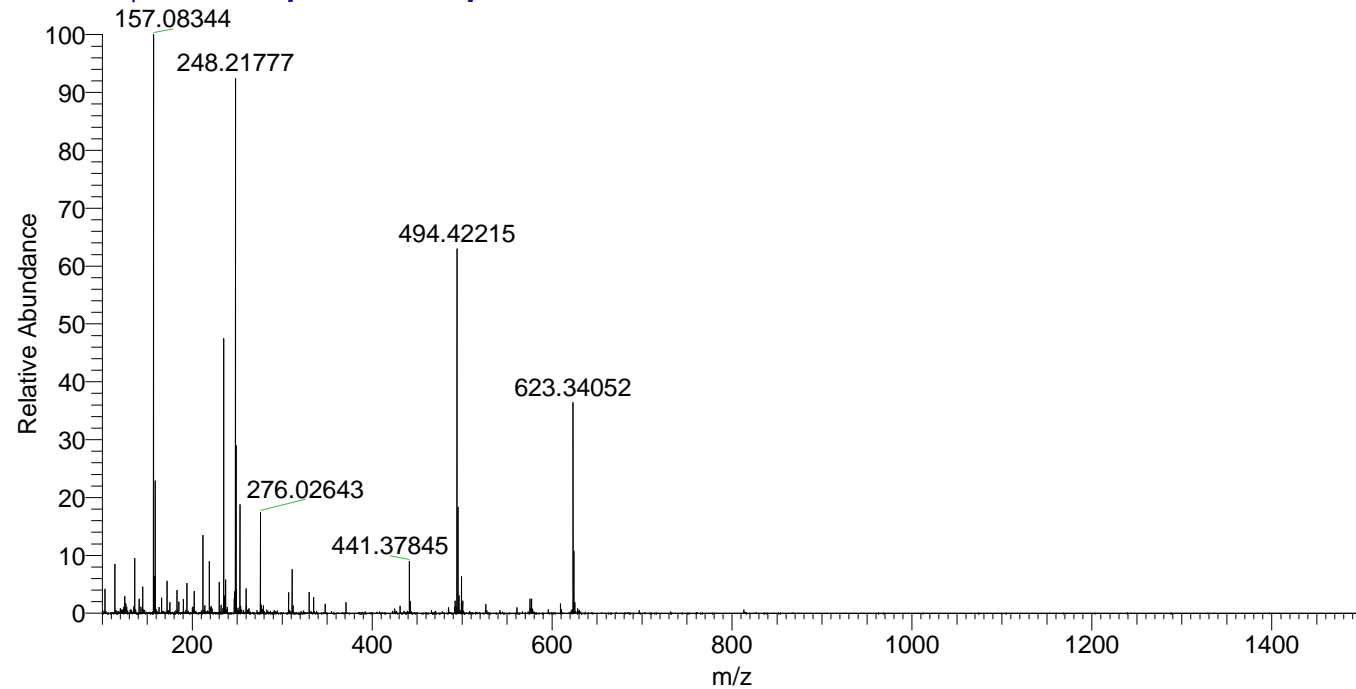
NL: 2.28E7  
 Base Peak m/z=  
 248.21735-248.21983 F: FTMS + p  
 ESI Full ms [100.00-1500.00] MS  
 Hcurta\_HDX

NL: 4.12E5  
 Base Peak m/z=  
 609.41917-609.42527 F: FTMS + p  
 ESI Full ms [100.00-1500.00] MS  
 Hcurta\_HDX

Hcurta\_HDX#1378 RT: 8.52  
 T: FTMS + p ESI Full ms [100.00-1500.00]  
 m/z= 494.00000-495.00000

m/z	Intensity	Relative	Delta (ppm)	Composition
494.42215	13571888.0	100.00	-0.78	C <sub>27</sub> H <sub>44</sub> <sup>2</sup> H <sub>5</sub> O <sub>2</sub> N <sub>6</sub>
			2.35	C <sub>27</sub> H <sub>42</sub> <sup>2</sup> H <sub>6</sub> O <sub>2</sub> N <sub>6</sub>
			-3.91	C <sub>27</sub> H <sub>46</sub> <sup>2</sup> H <sub>4</sub> O <sub>2</sub> N <sub>6</sub>

Hcurta\_HDX #1378 RT: 8.52 AV: 1 NL: 2.14E7  
 T: FTMS + p ESI Full ms [100.00-1500.00]



Hcurta\_HDX #1378 RT: 8.52 AV: 1 NL: 1.35E7  
 T: FTMS + p ESI Full ms [100.00-1500.00]

