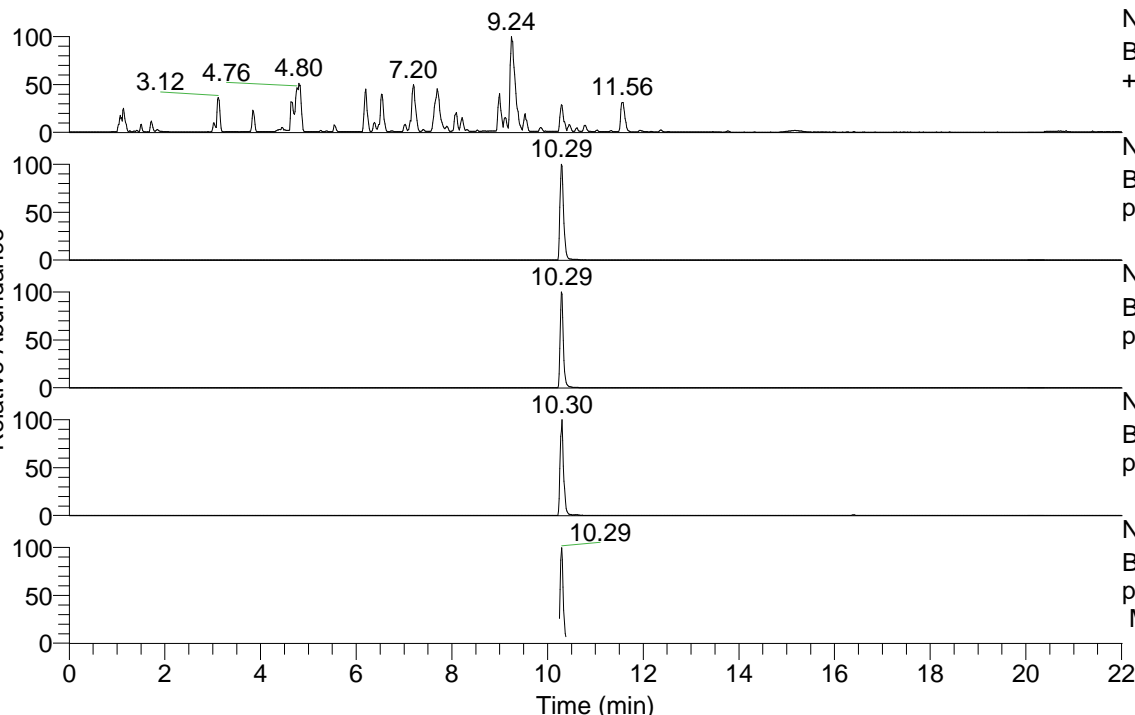


RT: 0.00 - 22.01



NL: 8.52E7  
 Base Peak m/z= 100.00000-1500.00000 F: FTMS + p ESI Full ms [100.00-1500.00] MS Hcurta

NL: 2.46E7  
 Base Peak m/z= 489.38681-489.39659 F: FTMS + p ESI Full ms [100.00-1500.00] MS Hcurta

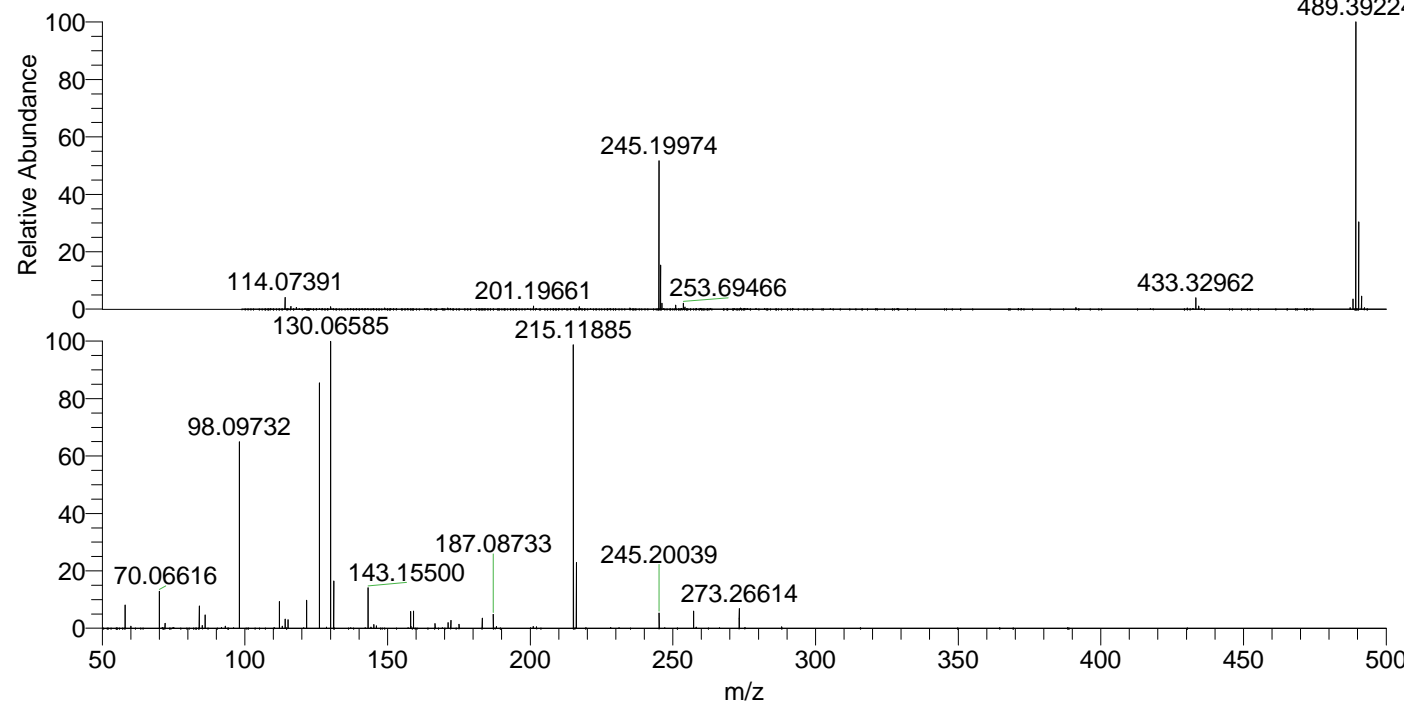
NL: 1.23E7  
 Base Peak m/z= 245.19731-245.20221 F: FTMS + p ESI Full ms [100.00-1500.00] MS Hcurta

NL: 8.79E5  
 Base Peak m/z= 603.37853-603.39059 F: FTMS + p ESI Full ms [100.00-1500.00] MS Hcurta

NL: 1.68E6  
 Base Peak m/z= 50.00000-1500.00000 F: FTMS + p ESI d Full ms2 245.20@hcd35.00 [50.00-520.00] MS Hcurta

Hcurta#4114-4149 RT: 10.25-10.33 AV: 7  
 F: FTMS + p ESI d Full ms2 245.20@h ...  
 m/z= 50.00000-1000.00000

| m/z       | Intensity | Relative |
|-----------|-----------|----------|
| 58.06624  | 81856.5   | 8.15     |
| 60.08176  | 7359.5    | 0.73     |
| 70.06616  | 132054.8  | 13.14    |
| 72.08178  | 17550.7   | 1.75     |
| 84.08178  | 78710.6   | 7.83     |
| 85.07698  | 9642.3    | 0.96     |
| 86.06094  | 13902.7   | 1.38     |
| 86.09740  | 46896.2   | 4.67     |
| 93.10520  | 7759.7    | 0.77     |
| 98.09732  | 650288.8  | 64.71    |
| 112.11293 | 94024.7   | 9.36     |
| 113.10820 | 7675.2    | 0.76     |
| 114.09218 | 32166.5   | 3.20     |
| 115.12380 | 29394.1   | 2.93     |
| 121.63397 | 98325.9   | 9.78     |
| 126.12851 | 871621.5  | 86.74    |
| 130.06585 | 1004904.0 | 100.00   |
| 131.11854 | 170036.6  | 16.92    |
| 143.15500 | 145428.7  | 14.47    |
| 145.17054 | 12985.8   | 1.29     |
| 146.06077 | 8550.7    | 0.85     |
| 158.06077 | 59759.8   | 5.95     |
| 158.16032 | 6412.0    | 0.64     |
| 159.09234 | 60584.7   | 6.03     |
| 166.67374 | 15710.7   | 1.56     |
| 171.18634 | 19797.9   | 1.97     |
| 172.18186 | 27601.9   | 2.75     |
| 175.06371 | 14082.8   | 1.40     |
| 175.08741 | 10147.9   | 1.01     |
| 183.18664 | 34848.7   | 3.47     |
| 187.08733 | 49561.4   | 4.93     |
| 188.17672 | 6413.7    | 0.64     |
| 201.10324 | 6197.0    | 0.62     |
| 215.11885 | 994057.8  | 98.92    |
| 216.20810 | 233587.6  | 23.24    |
| 245.20039 | 53392.9   | 5.31     |
| 257.27108 | 59839.4   | 5.95     |
| 273.26614 | 68628.1   | 6.83     |
| 288.17192 | 5124.7    | 0.51     |



NL: 2.38E7  
 Hcurta#4129 RT: 10.29  
 AV: 1 T: FTMS + p ESI  
 Full ms [100.00-1500.00]

NL: 1.00E6  
 Hcurta#4114-4152 RT:  
 10.25-10.33 AV: 7 F:  
 FTMS + p ESI d Full ms2  
 245.20@hcd35.00  
 [50.00-520.00]