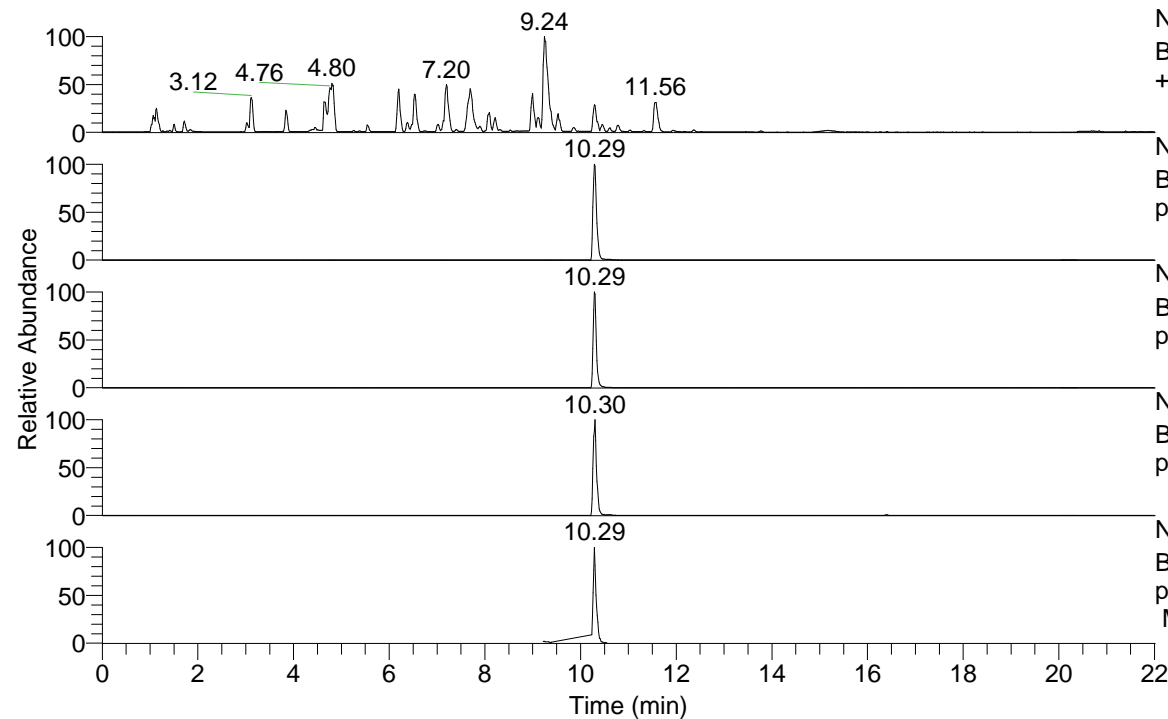


RT: 0.00 - 22.01



NL: 8.52E7
 Base Peak m/z= 100.00000-1500.00000 F: FTMS + p ESI Full ms [100.00-1500.00] MS Hcurta

NL: 2.46E7
 Base Peak m/z= 489.38681-489.39659 F: FTMS + p ESI Full ms [100.00-1500.00] MS Hcurta

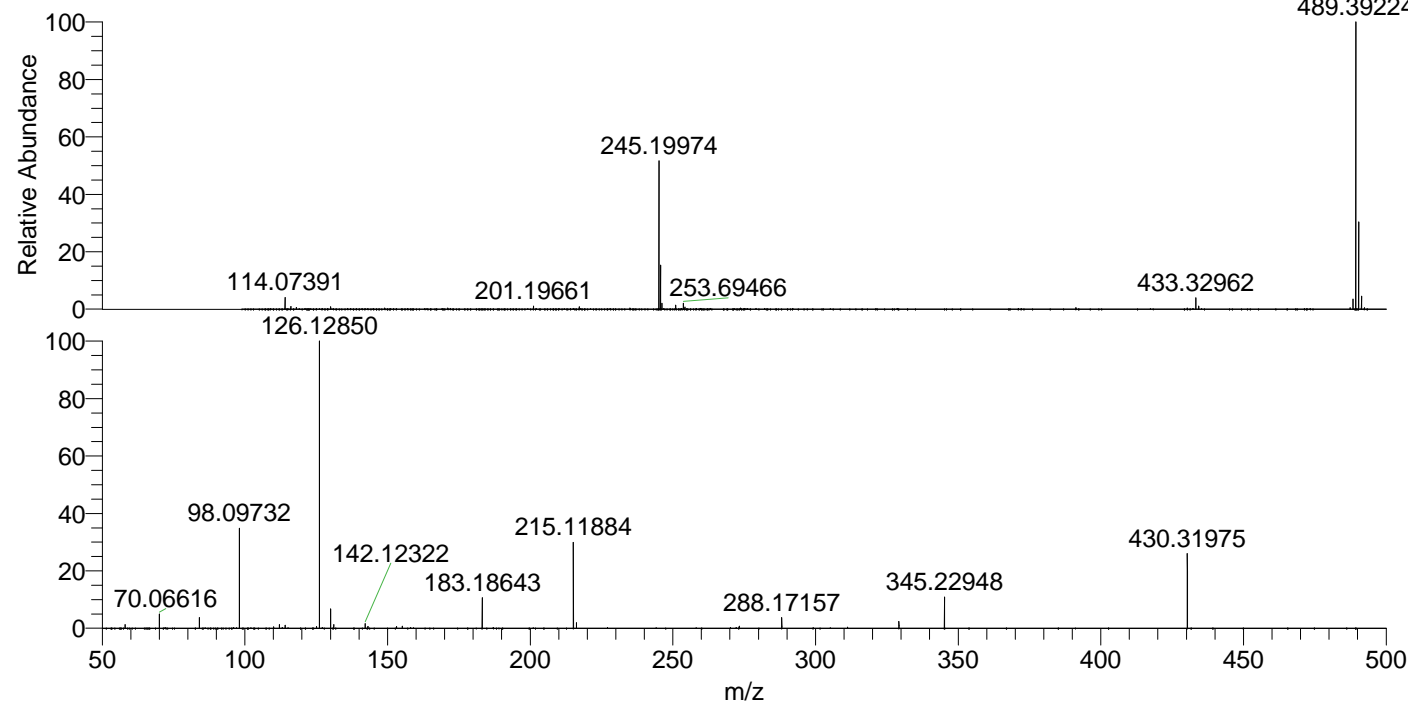
NL: 1.23E7
 Base Peak m/z= 245.19731-245.20221 F: FTMS + p ESI Full ms [100.00-1500.00] MS Hcurta

NL: 8.79E5
 Base Peak m/z= 603.37853-603.39059 F: FTMS + p ESI Full ms [100.00-1500.00] MS Hcurta

NL: 8.29E6
 Base Peak m/z= 50.00000-1500.00000 F: FTMS + p ESI d Full ms2 489.38@hcd35.00 [50.00-515.00] MS Hcurta

Hcurta#4112-4161 RT: 10.25-10.36 AV: 9
 F: FTMS + p ESI d Full ms2 489.38@h ...
 m/z= 50.00000-1000.00000

m/z	Intensity	Relative
58.06611	53433.6	1.30
70.06616	205088.6	4.99
84.08171	153252.3	3.73
98.09732	1397881.4	33.98
110.09728	21380.8	0.52
112.11281	52900.7	1.29
114.09216	42406.6	1.03
125.12056	26474.4	0.64
126.12850	4113422.5	100.00
130.06583	271705.1	6.61
131.11841	51846.9	1.26
142.12322	64765.3	1.57
143.15485	26642.2	0.65
153.13936	24826.7	0.60
155.15512	27850.5	0.68
183.18643	428909.8	10.43
215.11884	1200434.0	29.18
216.20809	79240.5	1.93
273.26626	30562.0	0.74
288.17157	150572.0	3.66
329.23519	95353.8	2.32
345.22948	440383.7	10.71
430.31975	1047720.4	25.47



489.39224 NL: 2.38E7
 Hcurta#4129 RT: 10.29
 AV: 1 T: FTMS + p ESI
 Full ms [100.00-1500.00]

NL: 4.01E6
 Hcurta#4111-4162 RT:
 10.25-10.36 AV: 9 F:
 FTMS + p ESI d Full ms2
 489.38@hcd35.00
 [50.00-515.00]