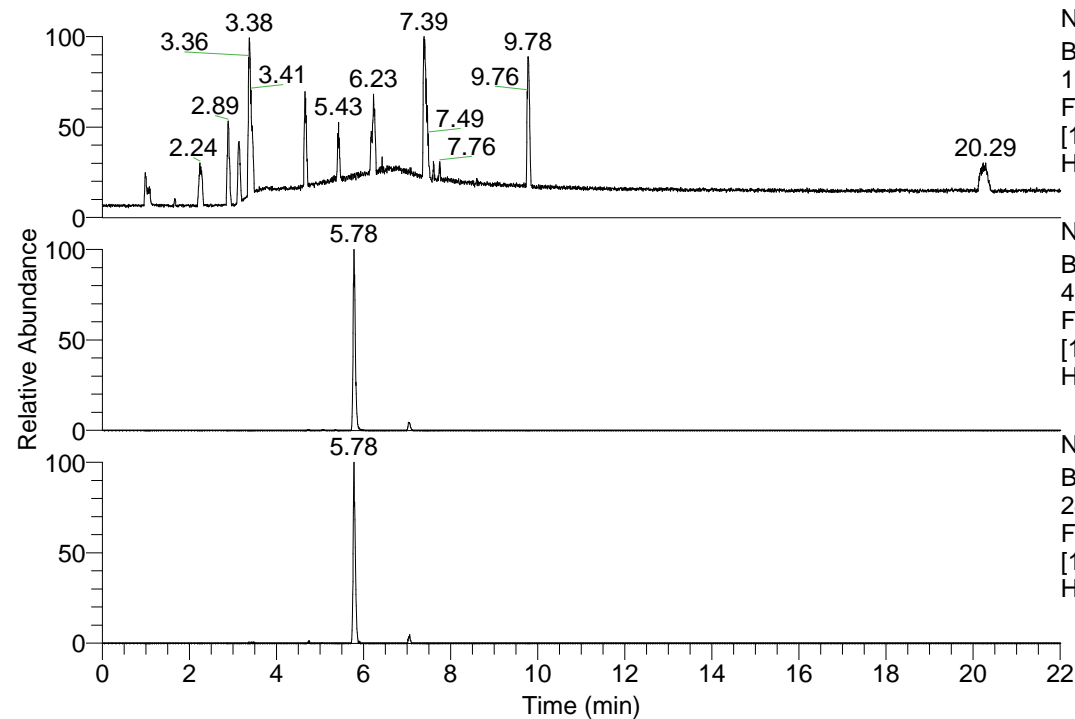


RT: 0.00 - 22.01



NL: 1.13E8
 Base Peak m/z=
 100.00000-1500.00000 F:
 FTMS + p ESI Full ms
 [100.00-1500.00] MS
 Hcurta_HDX

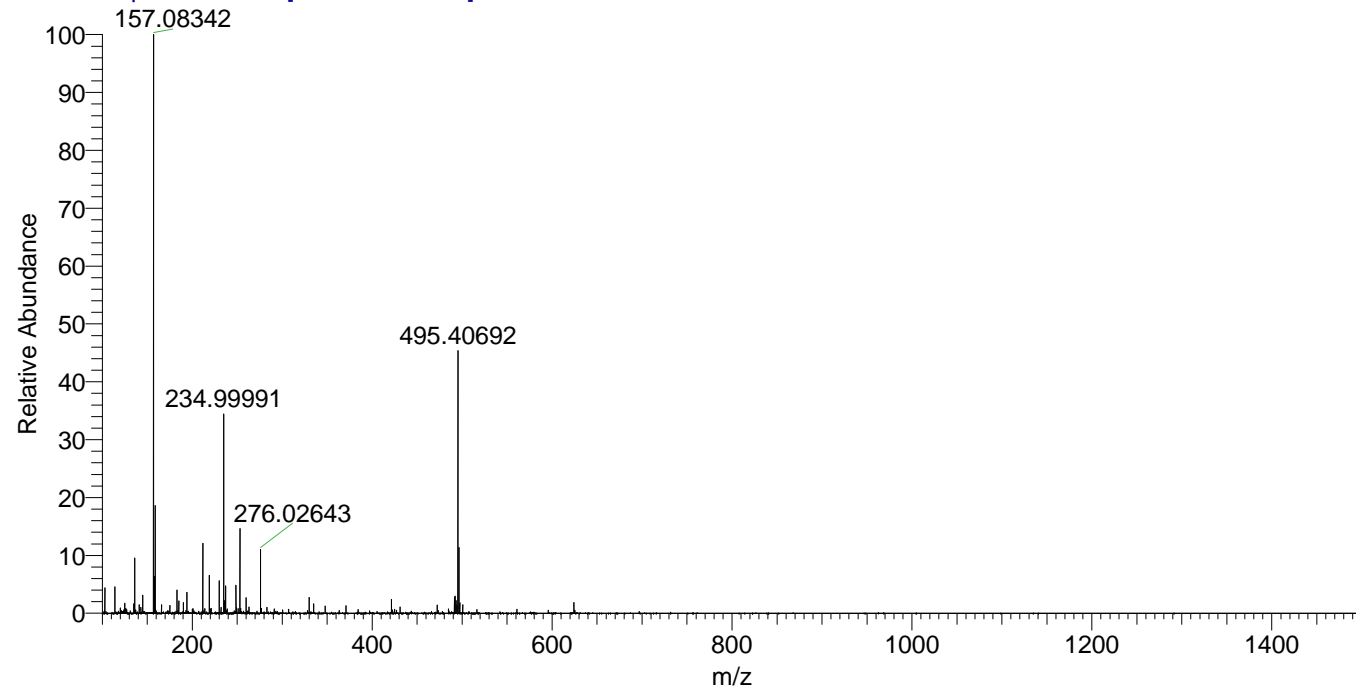
NL: 1.23E7
 Base Peak m/z=
 495.40543-495.41039 F:
 FTMS + p ESI Full ms
 [100.00-1500.00] MS
 Hcurta_HDX

NL: 1.31E6
 Base Peak m/z=
 248.70977-248.71225 F:
 FTMS + p ESI Full ms
 [100.00-1500.00] MS
 Hcurta_HDX

Hcurta_HDX#919 RT: 5.78
 T: FTMS + p ESI Full ms [100.00-1500.00]
 m/z= 495.00000-496.00000

m/z	Intensity	Relative	Delta (ppm)	Composition
495.40692	12256987.0	100.00	-0.89	C ₂₃ H ₃₅ ² H ₁₀ O ₅ N ₆
			2.23	C ₂₃ H ₃₃ ² H ₁₁ O ₅ N ₆
			-4.02	C ₂₃ H ₃₇ ² H ₉ O ₅ N ₆

Hcurta_HDX #919 RT: 5.78 AV: 1 NL: 2.70E7
 T: FTMS + p ESI Full ms [100.00-1500.00]



Hcurta_HDX #919 RT: 5.78 AV: 1 NL: 1.23E7
 T: FTMS + p ESI Full ms [100.00-1500.00]

