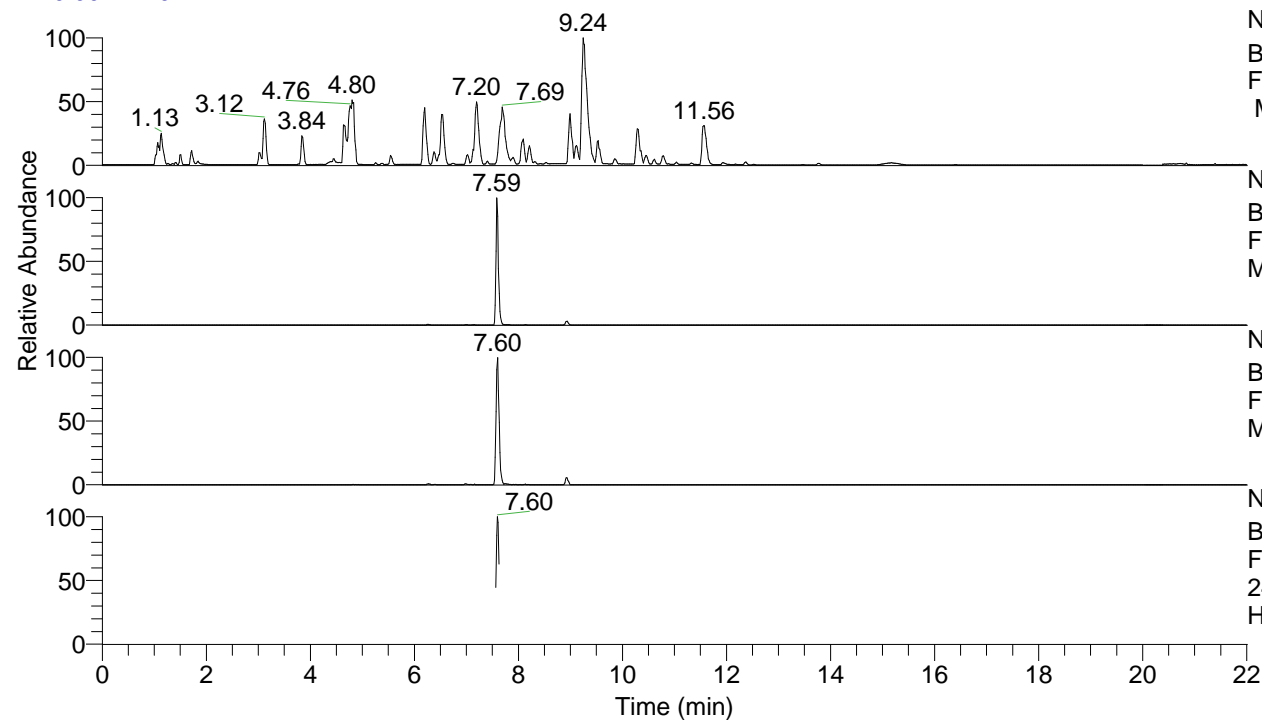


RT: 0.00 - 22.01



NL: 8.52E7  
 Base Peak m/z= 100.00000-1500.00000  
 F: FTMS + p ESI Full ms [100.00-1500.00]  
 MS Hcurta

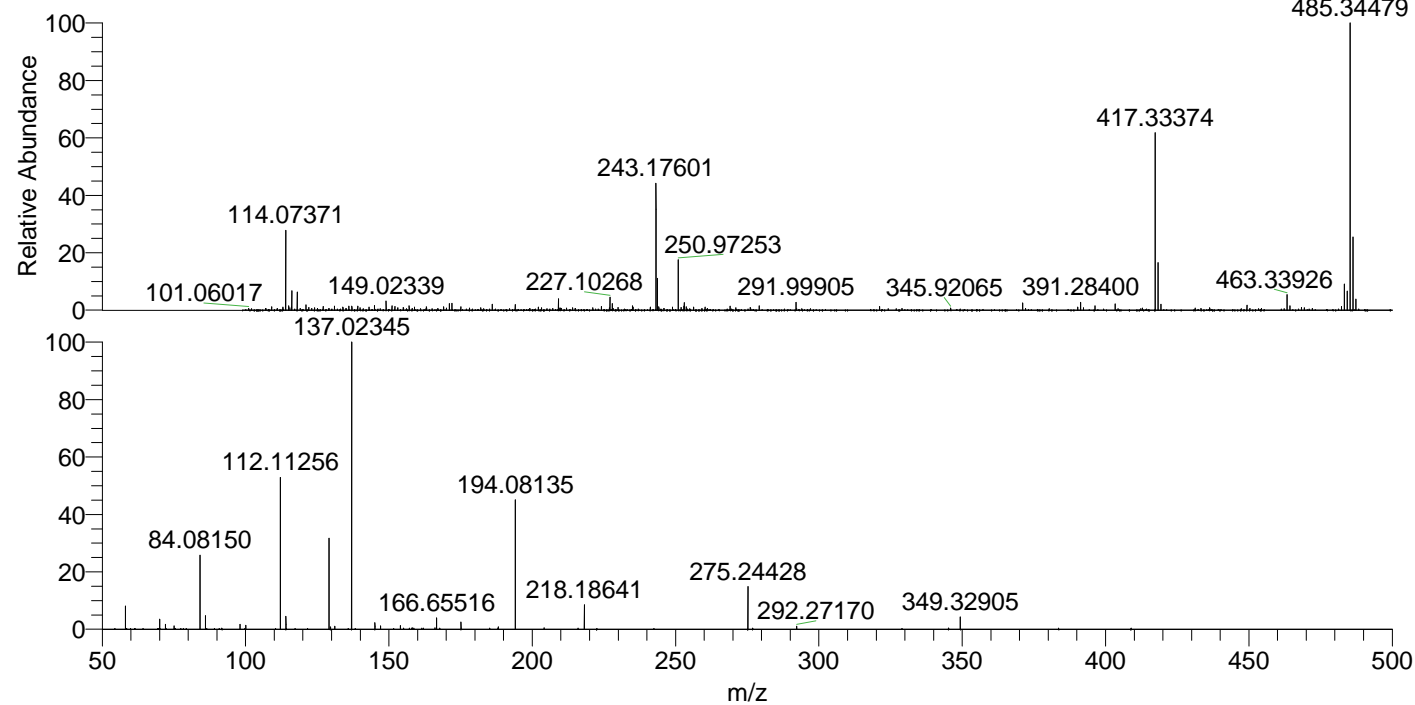
NL: 3.47E6  
 Base Peak m/z= 485.34029-485.34999 F:  
 FTMS + p ESI Full ms [100.00-1500.00]  
 MS Hcurta

NL: 1.64E6  
 Base Peak m/z= 243.17405-243.17891 F:  
 FTMS + p ESI Full ms [100.00-1500.00]  
 MS Hcurta

NL: 2.81E5  
 Base Peak m/z= 50.00000-1500.00000 F:  
 FTMS + p ESI d Full ms2  
 243.18@hcd35.00 [50.00-515.00] MS  
 Hcurta

Hcurta#3041-3059 RT: 7.58-7.63 AV: 4  
 F: FTMS + p ESI d Full ms2 243.18 ...  
 m/z= 50.00000-1000.00000

m/z	Intensity	Relative
58.06605	18636.0	8.20
70.06610	8081.9	3.56
72.08159	3941.4	1.73
75.09254	2675.0	1.18
84.08150	59115.2	26.02
86.06098	10634.3	4.68
98.09719	3914.0	1.72
100.07663	3290.6	1.45
112.11256	118210.2	52.03
114.09208	10115.3	4.45
129.13897	72059.1	31.72
129.61313	2017.5	0.89
131.11868	2449.3	1.08
137.02345	227199.1	100.00
145.13375	5128.3	2.26
147.11354	2794.8	1.23
154.04987	3010.5	1.33
166.65516	8975.7	3.95
175.16844	5625.8	2.48
188.17567	1801.6	0.79
194.08135	100716.0	44.33
218.18641	19216.2	8.46
275.24428	33248.3	14.63
292.27170	2428.7	1.07
349.32905	9591.4	4.22



NL: 3.35E6  
 Hcurta#3043 RT: 7.59  
 AV: 1 T: FTMS + p ESI  
 Full lock ms  
 [100.00-1500.00]

NL: 2.23E5  
 Hcurta#3036-3060 RT:  
 7.58-7.63 AV: 4 F: FTMS  
 + p ESI d Full ms2  
 243.18@hcd35.00  
 [50.00-515.00]