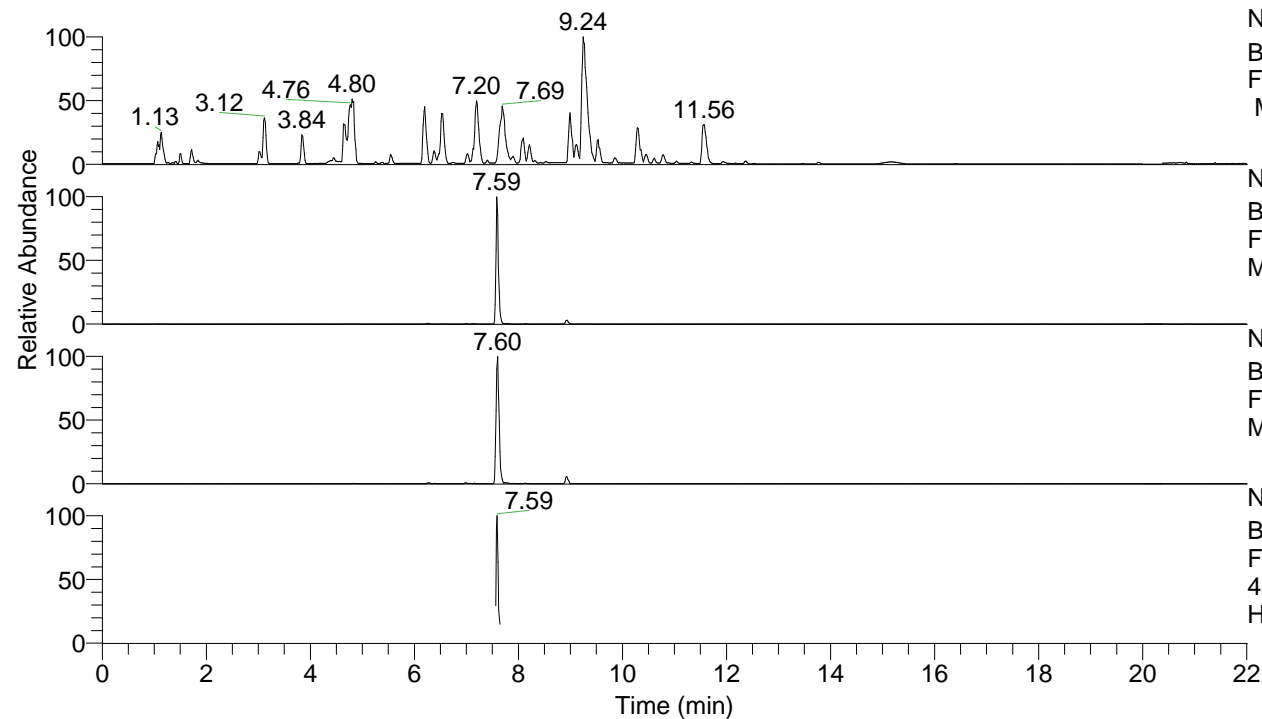


RT: 0.00 - 22.01



NL: 8.52E7
 Base Peak m/z= 100.00000-1500.00000
 F: FTMS + p ESI Full ms [100.00-1500.00]
 MS Hcurta

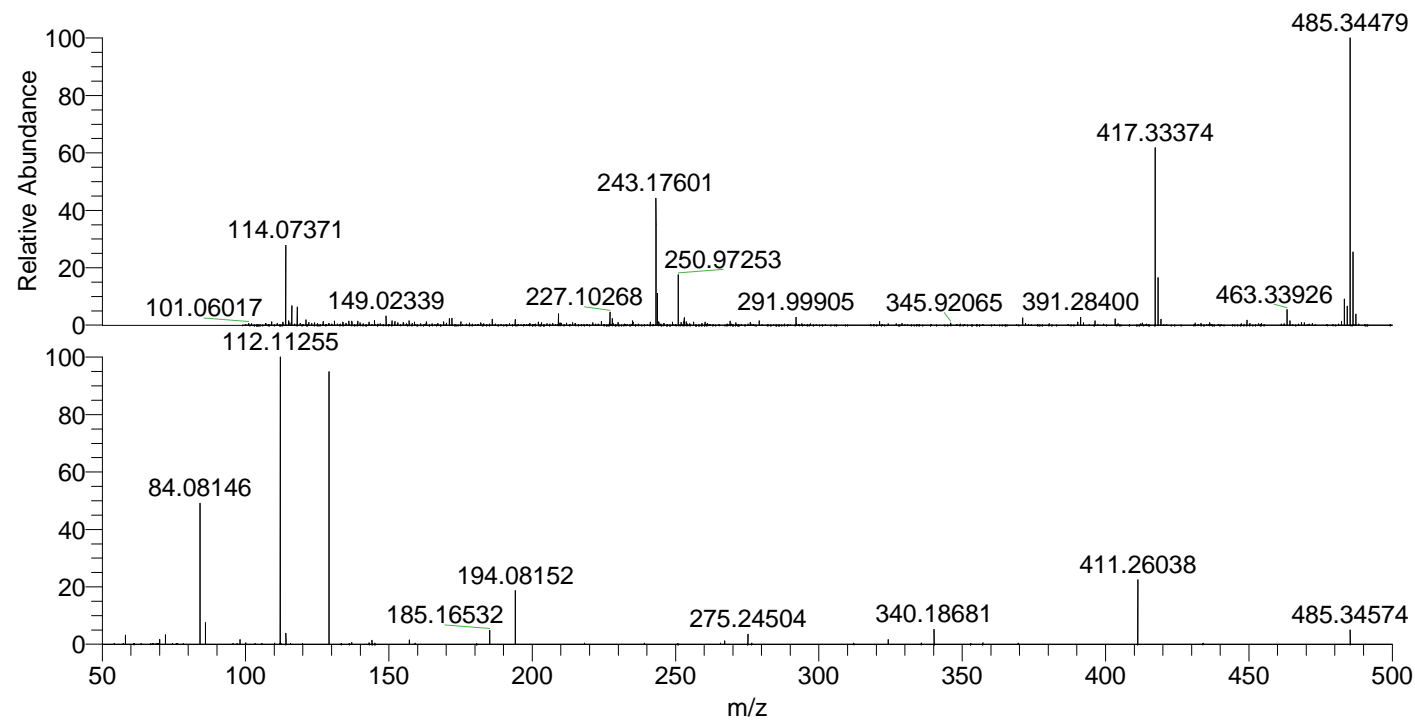
NL: 3.47E6
 Base Peak m/z= 485.34029-485.34999 F:
 FTMS + p ESI Full ms [100.00-1500.00]
 MS Hcurta

NL: 1.64E6
 Base Peak m/z= 243.17405-243.17891 F:
 FTMS + p ESI Full ms [100.00-1500.00]
 MS Hcurta

NL: 5.59E5
 Base Peak m/z= 50.00000-1500.00000 F:
 FTMS + p ESI d Full ms2
 485.34@hcd35.00 [50.00-515.00] MS
 Hcurta

Hcurta#3034-3050 RT: 7.56-7.61 AV: 4
 F: FTMS + p ESI d Full ms2 485.34 ...
 m/z= 50.00000-1000.00000

m/z	Intensity	Relative
58.06598	11925.9	3.18
70.06602	6750.7	1.80
72.08156	12695.6	3.39
84.08146	183911.2	49.11
86.06074	28956.6	7.73
98.09724	6091.3	1.63
100.07634	1959.5	0.52
112.11255	374478.1	100.00
114.09182	14883.8	3.97
129.13885	363889.1	97.17
137.02373	2353.4	0.63
144.12590	5332.3	1.42
157.13396	5639.3	1.51
185.16532	18338.0	4.90
194.08152	69661.5	18.60
267.13486	4615.2	1.23
275.24504	12871.1	3.44
324.19115	5841.3	1.56
340.18681	19359.2	5.17
411.26038	83948.0	22.42
485.34574	18580.9	4.96



NL: 3.35E6
 Hcurta#3043 RT: 7.59
 AV: 1 T: FTMS + p ESI
 Full lock ms
 [100.00-1500.00]

NL: 3.71E5
 Hcurta#3034-3056 RT:
 7.56-7.61 AV: 4 F: FTMS
 + p ESI d Full ms2
 485.34@hcd35.00
 [50.00-515.00]