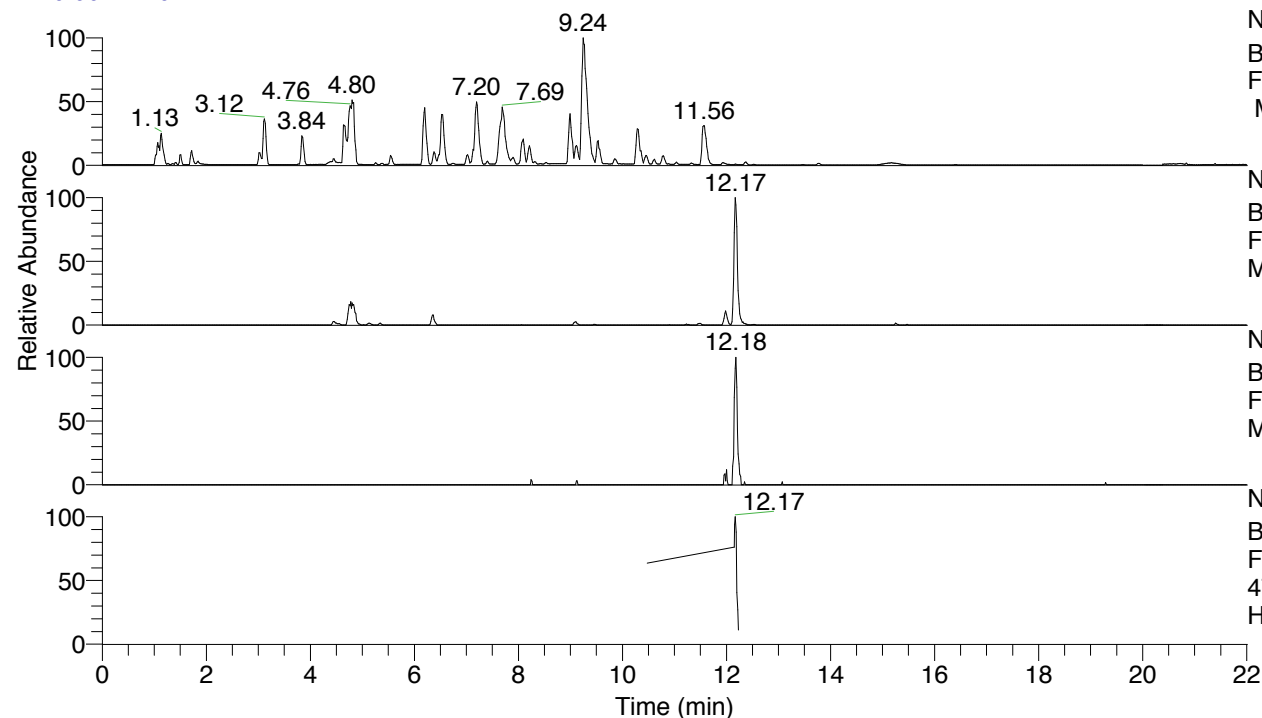


RT: 0.00 - 22.01



NL: 8.52E7
 Base Peak m/z= 100.00000-1500.00000
 F: FTMS + p ESI Full ms [100.00-1500.00]
 MS Hcurta

NL: 8.62E5
 Base Peak m/z= 475.33491-475.34441 F:
 FTMS + p ESI Full ms [100.00-1500.00]
 MS Hcurta

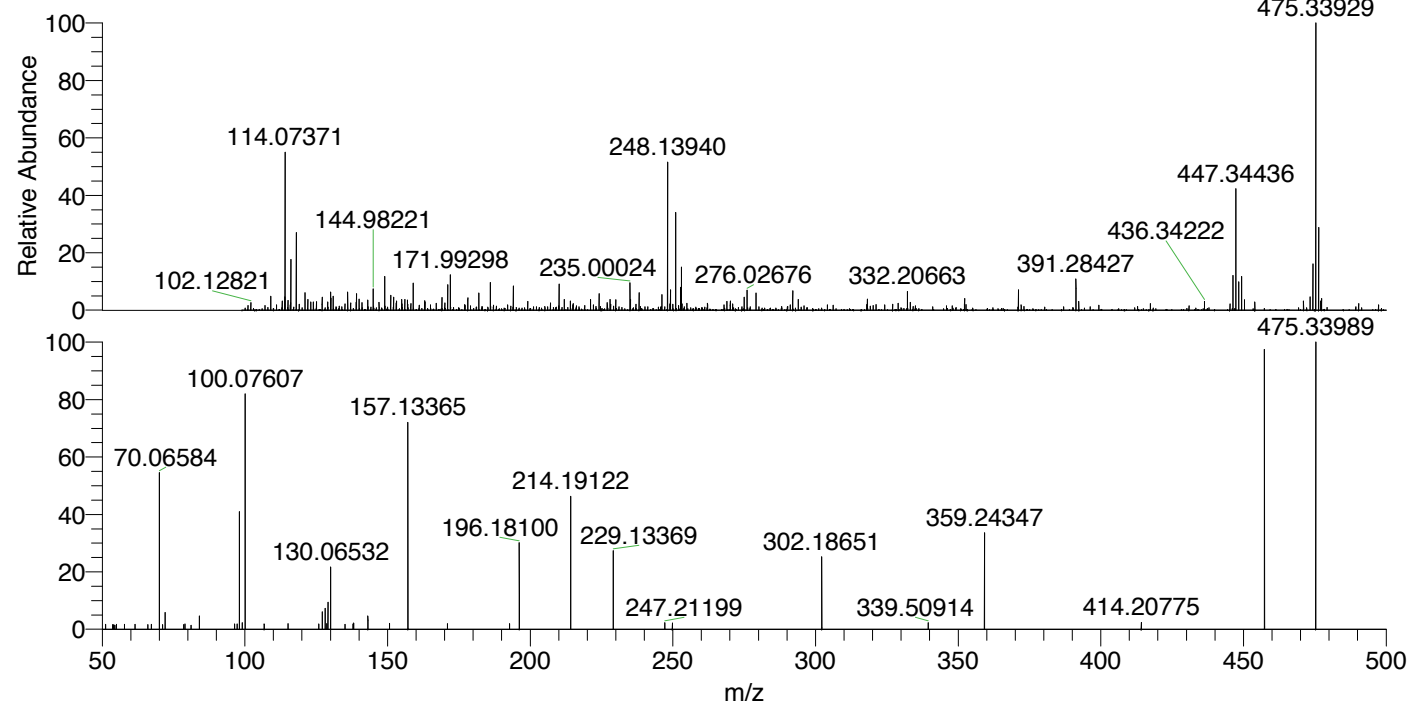
NL: 5.51E4
 Base Peak m/z= 238.17136-238.17612 F:
 FTMS + p ESI Full ms [100.00-1500.00]
 MS Hcurta

NL: 6.92E4
 Base Peak m/z= 50.00000-1500.00000 F:
 FTMS + p ESI d Full ms2
 475.34@hcd35.00 [50.00-505.00] MS
 Hcurta

Hcurta#4872-4892 RT: 12.15-12.20 AV: 5

F: FTMS + p ESI d Full ms2 475.34 ...
 m/z= 50.00000-1000.00000

m/z	Intensity	Relative
51.21343	747.8	1.57
53.67652	677.4	1.42
53.98079	642.0	1.35
54.13798	645.4	1.36
55.01228	755.0	1.59
56.66902	718.1	1.51
57.79639	747.5	1.57
61.45733	755.4	1.59
66.01269	690.4	1.45
67.18150	754.4	1.59
70.06585	27222.4	57.25
71.14439	720.6	1.52
72.08153	2535.5	5.33
78.58814	704.5	1.48
78.96700	788.8	1.66
84.08143	1966.5	4.14
84.36251	655.9	1.38
85.10467	679.2	1.43
86.55801	730.9	1.54
96.34282	817.1	1.72
97.28461	809.2	1.70
98.09689	21289.0	44.77
99.09177	958.2	2.02
100.07607	38948.5	81.92
106.76917	780.8	1.64
115.13810	845.5	1.78
116.51897	878.7	1.85
125.88186	783.4	1.65
127.12315	2638.5	5.55
128.10750	3125.8	6.57
128.65667	837.4	1.76
129.10245	4062.7	8.54
130.00868	758.7	1.60
130.06532	10723.4	22.55
135.06799	754.6	1.59
137.90740	794.4	1.67
138.11029	949.1	2.00
143.11759	2013.8	4.24
150.67986	903.0	1.90
157.13365	36766.5	77.33
170.98811	849.5	1.79
192.77527	834.6	1.76
196.18103	14473.7	30.44
214.19122	20985.8	44.14
229.13370	13513.2	28.42
247.21199	1003.4	2.11
249.82983	931.1	1.96
302.18651	10755.2	22.62
339.50914	990.8	2.08
359.24343	15744.2	33.11
376.27092	923.4	1.94
395.59574	895.9	1.88
414.20775	1039.5	2.19
457.32794	46423.5	97.64
475.33967	47546.7	100.00



NL: 8.27E5
 Hcurta#4879 RT: 12.17
 AV: 1 T: FTMS + p ESI
 Full lock ms
 [100.00-1500.00]

NL: 5.32E4
 Hcurta#4872-4890 RT:
 12.15-12.19 AV: 4 F:
 FTMS + p ESI d Full ms2
 475.34@hcd35.00
 [50.00-505.00]

Hcurta#4872-4892 RT: 12.15-12.20 AV: 5

F: FTMS + p ESI d Full ms2 475.34@hcd35.00 [50.00-505.00]

m/z= 50.00000-1000.00000

m/z	Intensity	Relative
51.21343	747.8	1.57
51.42916	598.7	1.26
53.67652	677.4	1.42
53.98079	642.0	1.35
54.13798	645.4	1.36
54.43850	570.3	1.20
55.01228	755.0	1.59
56.38400	637.7	1.34
56.66902	718.1	1.51
57.41196	633.5	1.33
57.79639	747.5	1.57
61.45733	755.4	1.59
66.01269	690.4	1.45
67.18150	754.4	1.59
70.06585	27222.4	57.25
71.14439	720.6	1.52
72.08153	2535.5	5.33
78.58814	704.5	1.48
78.96700	788.8	1.66
81.10095	603.7	1.27
84.08143	1966.5	4.14
84.36251	655.9	1.38
85.10467	679.2	1.43
86.55801	730.9	1.54
96.34282	817.1	1.72
97.28461	809.2	1.70
98.09689	21289.0	44.77
99.09177	958.2	2.02
100.07607	38948.5	81.92
106.76917	780.8	1.64
115.13810	845.5	1.78
116.51897	878.7	1.85
125.88186	783.4	1.65
127.12315	2638.5	5.55
128.10750	3125.8	6.57
128.65667	837.4	1.76
129.10245	4062.7	8.54
130.00868	758.7	1.60
130.06532	10723.4	22.55

Hcurta#4872-4892 RT: 12.15-12.20 AV: 5

F: FTMS + p ESI d Full ms2 475.34@hcd35.00 [50.00-505.00]

m/z= 50.00000-1000.00000

m/z	Intensity	Relative
135.06799	754.6	1.59
137.90740	794.4	1.67
138.11029	949.1	2.00
143.11759	2013.8	4.24
150.67986	903.0	1.90
157.13365	36766.5	77.33
170.98811	849.5	1.79
192.77527	834.6	1.76
196.18103	14473.7	30.44
214.19124	20985.8	44.14
229.13370	13513.2	28.42
247.21199	1003.4	2.11
249.82983	931.1	1.96
302.18651	10755.2	22.62
339.50914	990.8	2.08
359.24343	15744.2	33.11
376.27092	923.4	1.94
395.59574	895.9	1.88
414.20775	1039.5	2.19
457.32794	46423.5	97.64
475.33967	47546.7	100.00