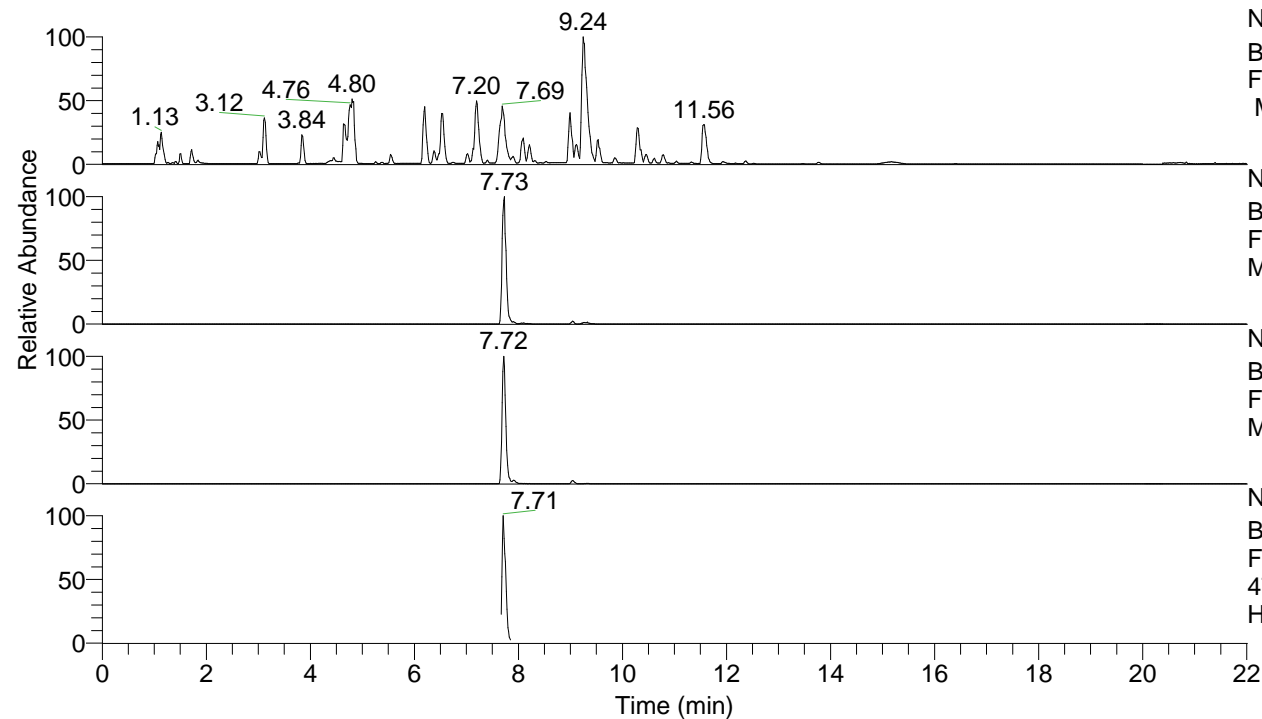


RT: 0.00 - 22.01



NL: 8.52E7
 Base Peak m/z= 100.00000-1500.00000
 F: FTMS + p ESI Full ms [100.00-1500.00]
 MS Hcurta

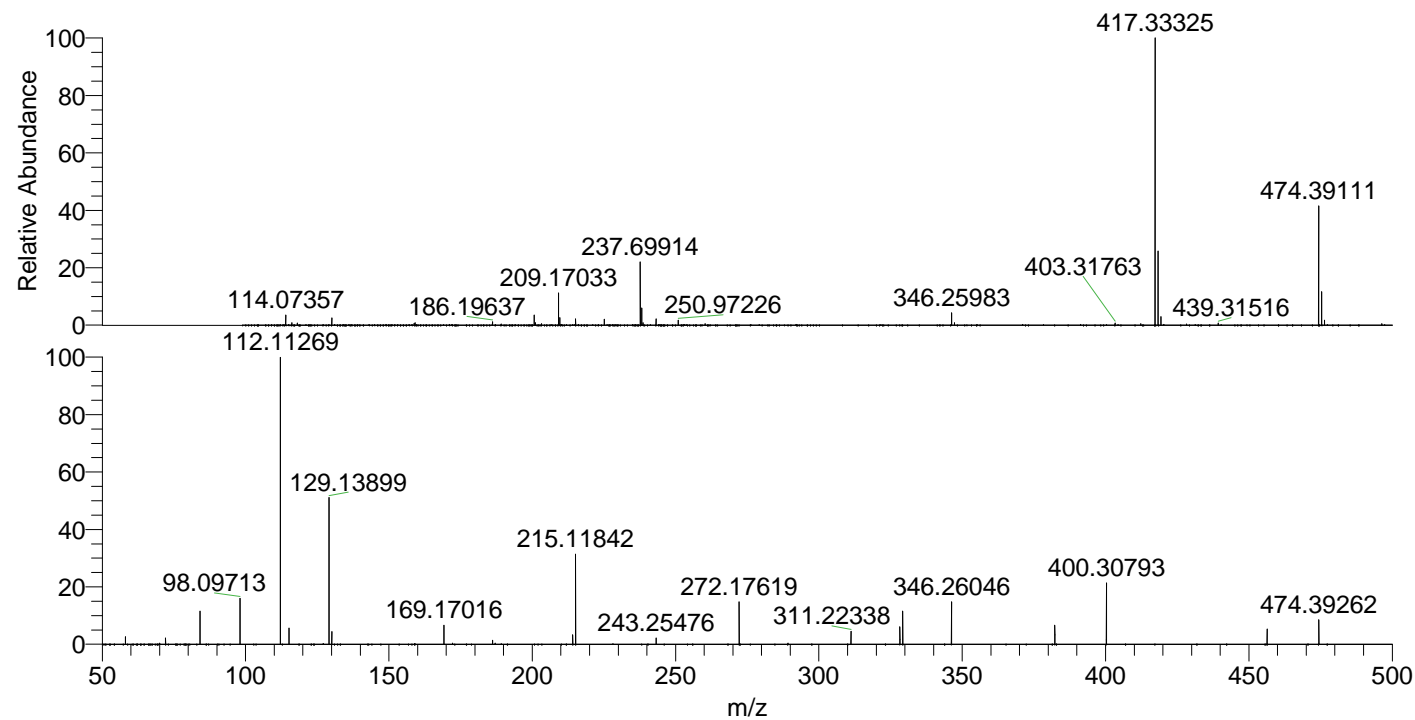
NL: 1.18E7
 Base Peak m/z= 474.38729-474.39677 F:
 FTMS + p ESI Full ms [100.00-1500.00]
 MS Hcurta

NL: 6.55E6
 Base Peak m/z= 237.69755-237.70231 F:
 FTMS + p ESI Full ms [100.00-1500.00]
 MS Hcurta

NL: 2.43E6
 Base Peak m/z= 50.00000-1500.00000 F:
 FTMS + p ESI d Full ms2
 474.39@hcd35.00 [50.00-500.00] MS
 Hcurta

Hcurta#3077-3123 RT: 7.67-7.78 AV: 9
 F: FTMS + p ESI d Full ms2 474.39@h ...
 m/z= 50.00000-1000.00000

m/z	Intensity	Relative
58.06606	36015.6	2.65
72.08167	30436.8	2.24
84.08157	157328.7	11.58
98.09713	220712.7	16.25
112.11269	1358392.4	100.00
115.12355	76991.1	5.67
129.13899	715161.9	52.65
130.06528	60670.9	4.47
169.17016	90049.1	6.63
186.19690	19162.3	1.41
214.13434	44049.0	3.24
215.11842	427496.2	31.47
243.25476	29603.3	2.18
272.17619	204022.3	15.02
311.22338	62823.8	4.62
328.24984	84329.1	6.21
329.23389	160647.7	11.83
346.26046	199965.3	14.72
382.29676	90264.0	6.64
400.30793	293020.0	21.57
456.38163	71138.5	5.24
474.39262	118272.0	8.71



NL: 2.73E7
 Hcurta#3103 RT: 7.73
 AV: 1 T: FTMS + p ESI
 Full ms [100.00-1500.00]

NL: 1.35E6
 Hcurta#3077-3123 RT:
 7.67-7.78 AV: 9 F: FTMS
 + p ESI d Full ms2
 474.39@hcd35.00
 [50.00-500.00]