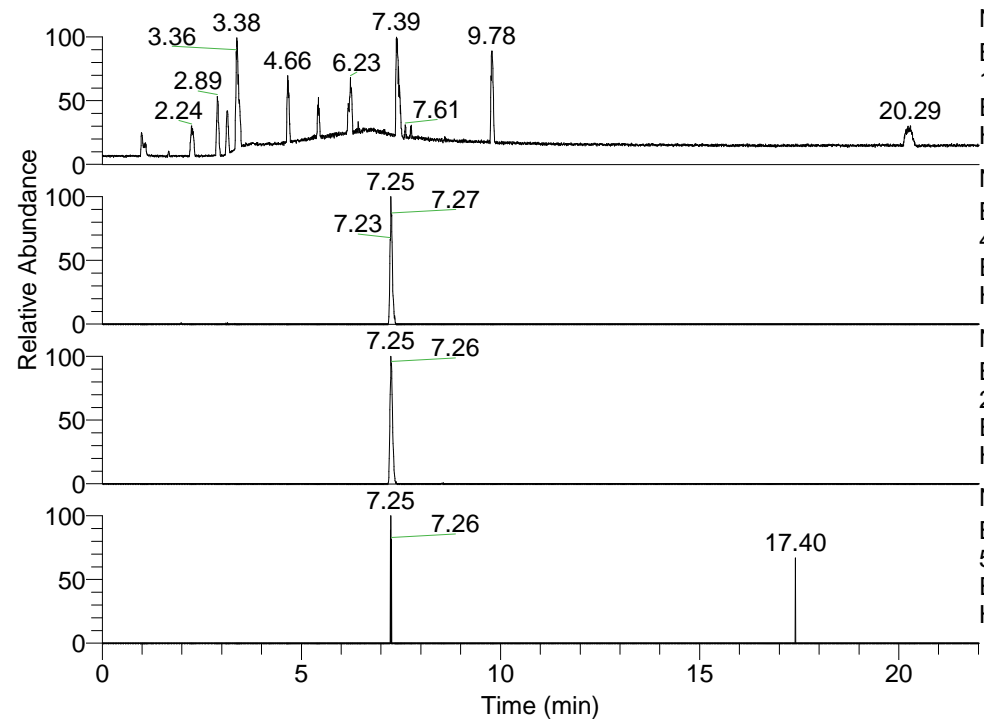


RT: 0.00 - 22.01



NL: 1.13E8  
 Base Peak m/z=  
 100.00000-1500.00000 F: FTMS + p  
 ESI Full ms [100.00-1500.00] MS  
 Hcurta\_HDX

NL: 6.17E5  
 Base Peak m/z=  
 478.42578-478.43056 F: FTMS + p  
 ESI Full ms [100.00-1500.00] MS  
 Hcurta\_HDX

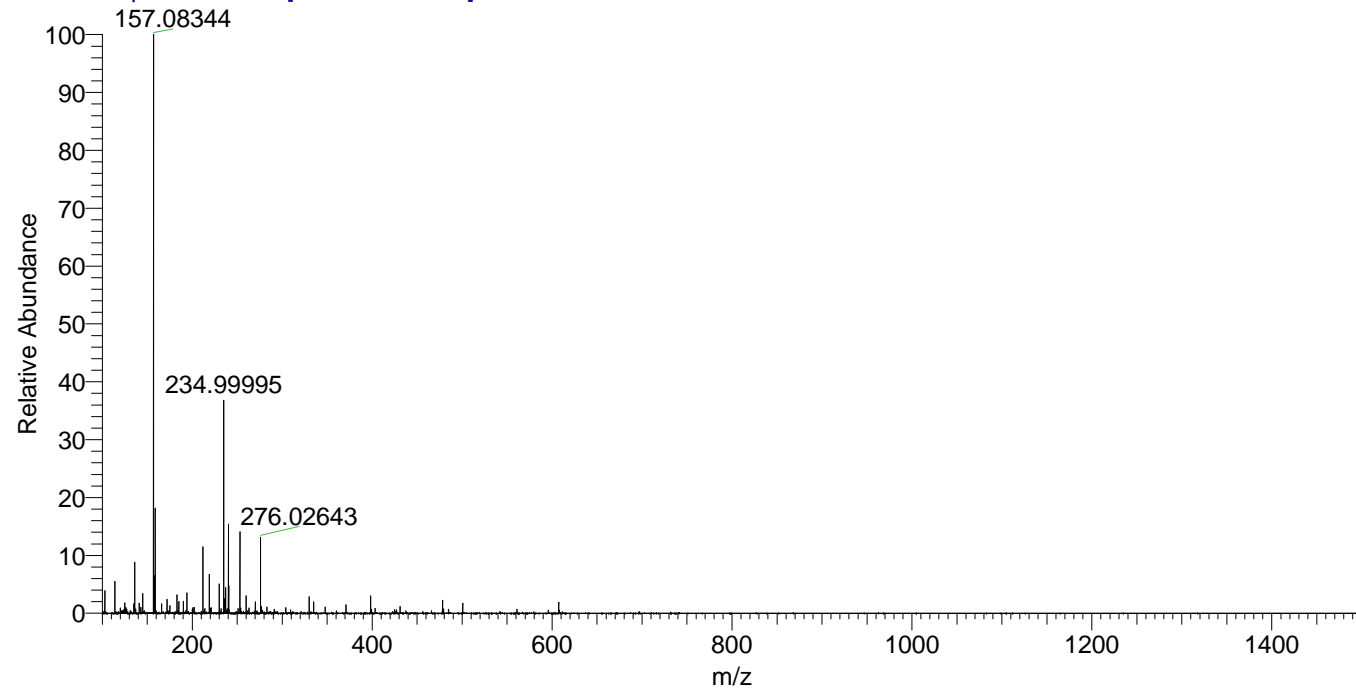
NL: 4.33E6  
 Base Peak m/z=  
 240.21994-240.22234 F: FTMS + p  
 ESI Full ms [100.00-1500.00] MS  
 Hcurta\_HDX

NL: 4.34E3  
 Base Peak m/z=  
 593.42434-593.43028 F: FTMS + p  
 ESI Full ms [100.00-1500.00] MS  
 Hcurta\_HDX

Hcurta\_HDX#1165 RT: 7.25  
 T: FTMS + p ESI Full ms [100.00-1500.00]  
 m/z= 478.00000-479.00000

m/z	Intensity	Relative	Delta (ppm)	Composition
478.42737	616544.1	100.00	-0.53	C <sub>27</sub> H <sub>44</sub> <sup>2</sup> H <sub>5</sub> O <sub>6</sub> N <sub>6</sub>
			2.71	C <sub>27</sub> H <sub>42</sub> <sup>2</sup> H <sub>6</sub> O <sub>6</sub> N <sub>6</sub>
			-3.76	C <sub>27</sub> H <sub>46</sub> <sup>2</sup> H <sub>4</sub> O <sub>6</sub> N <sub>6</sub>

Hcurta\_HDX #1165 RT: 7.25 AV: 1 NL: 2.70E7  
 T: FTMS + p ESI Full ms [100.00-1500.00]



Hcurta\_HDX #1165 RT: 7.25 AV: 1 NL: 6.08E5  
 T: FTMS + p ESI Full ms [100.00-1500.00]

