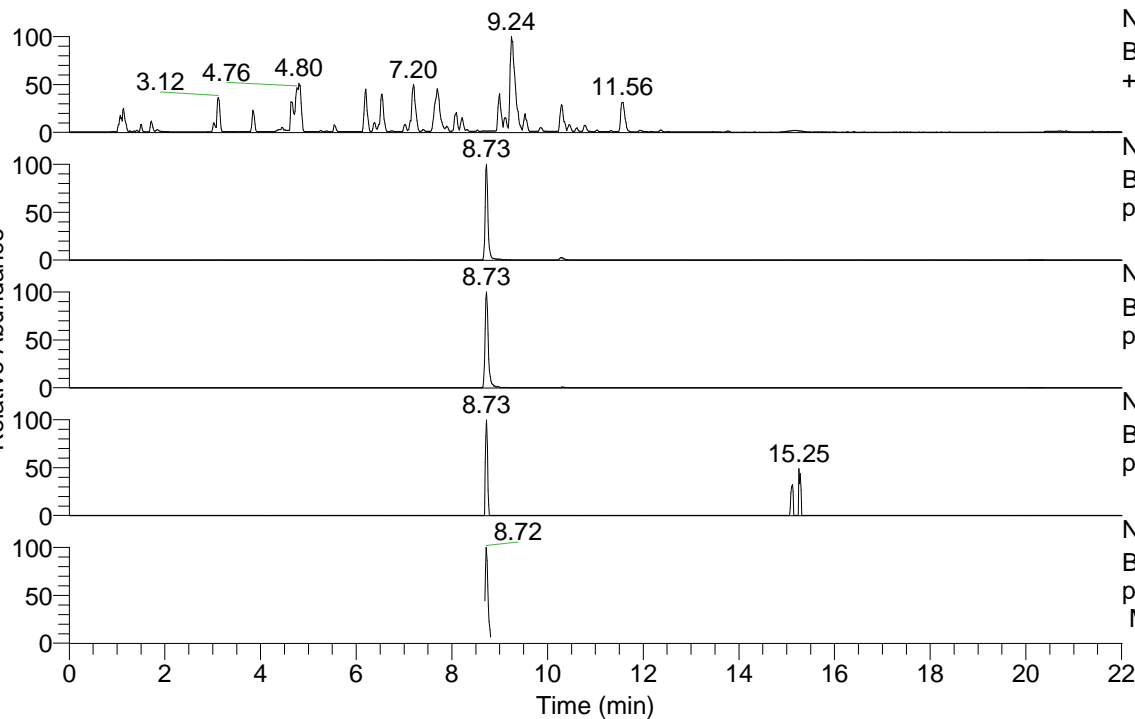


RT: 0.00 - 22.01



NL: 8.52E7
 Base Peak m/z= 100.00000-1500.00000 F: FTMS + p ESI Full ms [100.00-1500.00] MS Hcurta

NL: 1.11E6
 Base Peak m/z= 473.39206-473.40152 F: FTMS + p ESI Full ms [100.00-1500.00] MS Hcurta

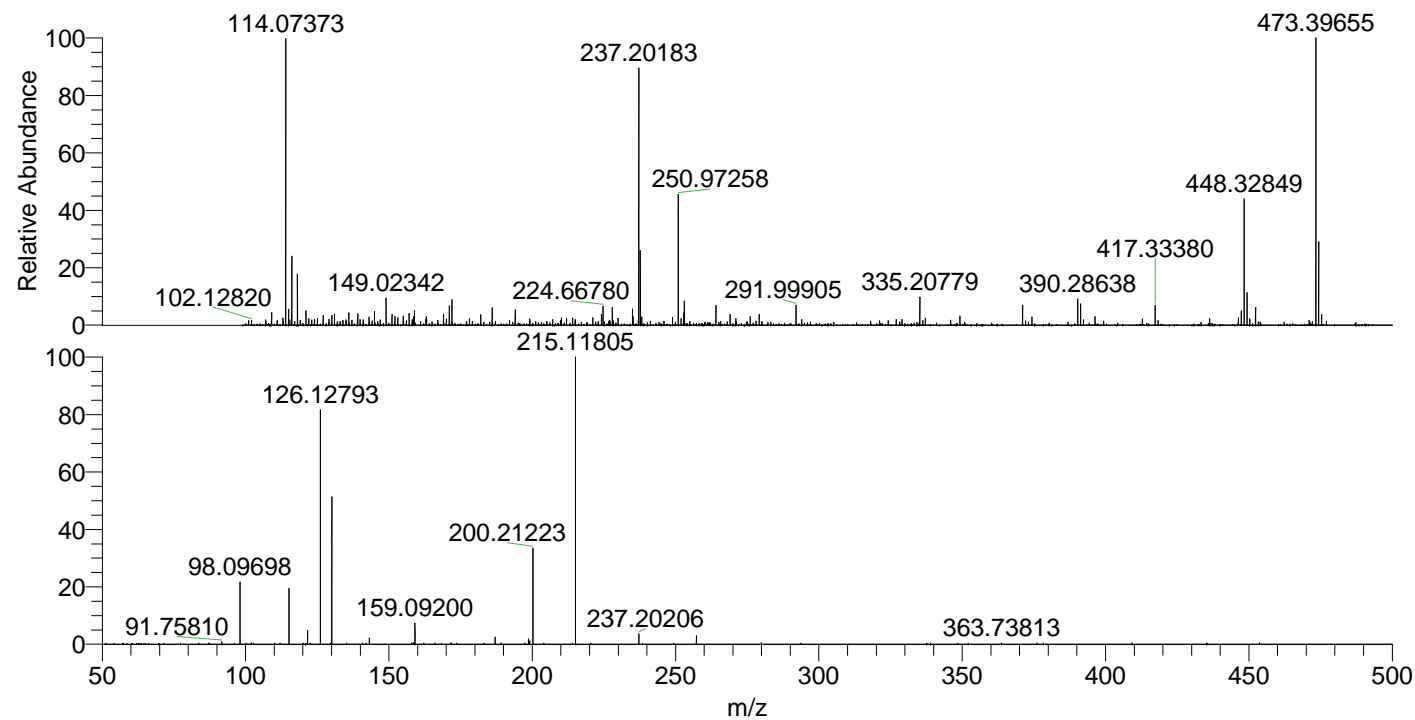
NL: 9.95E5
 Base Peak m/z= 237.19994-237.20468 F: FTMS + p ESI Full ms [100.00-1500.00] MS Hcurta

NL: 1.55E4
 Base Peak m/z= 587.38378-587.39552 F: FTMS + p ESI Full ms [100.00-1500.00] MS Hcurta

NL: 1.97E5
 Base Peak m/z= 50.00000-1500.00000 F: FTMS + p ESI d Full ms2 237.20@hcd35.00 [50.00-500.00] MS Hcurta

Hcurta#3484-3514 RT: 8.69-8.76 AV: 6
 F: FTMS + p ESI d Full ms2 237.20 ...
 m/z= 50.00000-1000.00000

m/z	Intensity	Relative
91.75810	1013.4	0.81
98.09698	27486.3	21.95
115.12343	24300.6	19.40
121.63353	6251.9	4.99
126.12793	103694.3	82.80
130.06526	66604.7	53.18
143.15451	2709.4	2.16
158.67697	690.3	0.55
159.09200	9358.0	7.47
187.08712	3124.0	2.49
198.66026	2328.5	1.86
199.15233	1475.9	1.18
200.21223	41960.9	33.50
215.11805	125239.0	100.00
237.20206	4547.2	3.63
257.27048	3722.8	2.97
363.73813	645.6	0.52



NL: 1.09E6
 Hcurta#3499 RT: 8.73
 AV: 1 T: FTMS + p ESI
 Full lock ms
 [100.00-1500.00]

NL: 1.25E5
 Hcurta#3484-3517 RT:
 8.69-8.76 AV: 6 F: FTMS
 + p ESI d Full ms2
 237.20@hcd35.00
 [50.00-500.00]