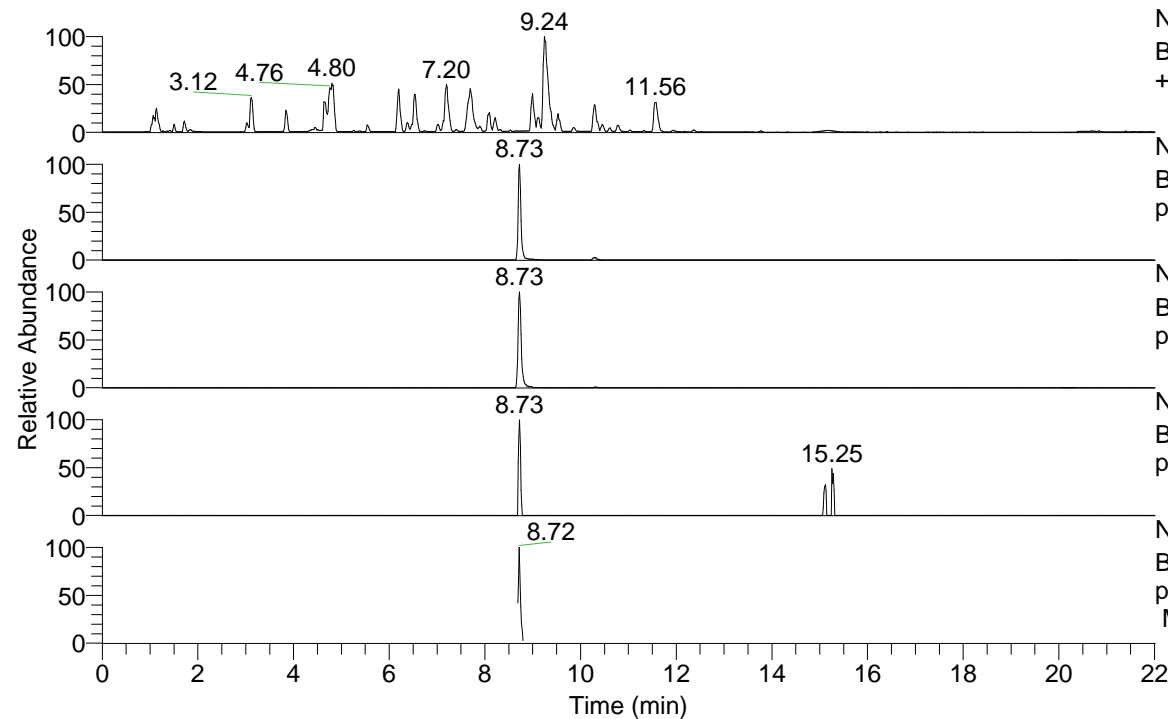


RT: 0.00 - 22.01



NL: 8.52E7
 Base Peak m/z= 100.00000-1500.00000 F: FTMS + p ESI Full ms [100.00-1500.00] MS Hcurta

NL: 1.11E6
 Base Peak m/z= 473.39206-473.40152 F: FTMS + p ESI Full ms [100.00-1500.00] MS Hcurta

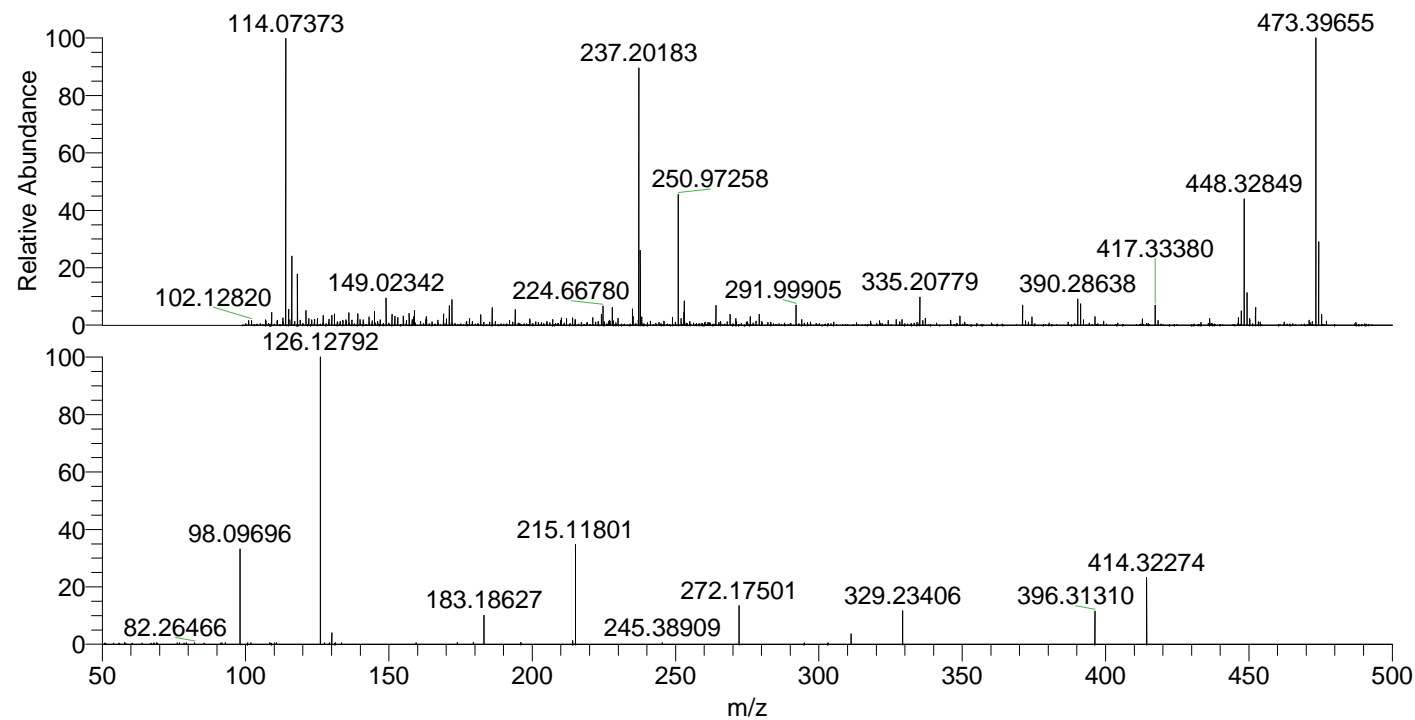
NL: 9.95E5
 Base Peak m/z= 237.19994-237.20468 F: FTMS + p ESI Full ms [100.00-1500.00] MS Hcurta

NL: 1.55E4
 Base Peak m/z= 587.38378-587.39552 F: FTMS + p ESI Full ms [100.00-1500.00] MS Hcurta

NL: 3.28E5
 Base Peak m/z= 50.00000-1500.00000 F: FTMS + p ESI d Full ms2 473.40@hcd35.00 [50.00-500.00] MS Hcurta

Hcurta#3491-3507 RT: 8.71-8.75 AV: 4
 F: FTMS + p ESI d Full ms2 473.40 ...
 m/z= 50.00000-1000.00000

m/z	Intensity	Relative
68.02067	1101.8	0.52
76.96218	1111.9	0.52
82.26466	1135.6	0.53
91.75194	1129.4	0.53
98.09696	69492.6	32.58
101.86366	1073.1	0.50
110.14070	1070.2	0.50
126.12792	213280.0	100.00
129.26036	1068.5	0.50
130.06573	8164.5	3.83
133.51097	1077.3	0.51
173.89342	1167.4	0.55
179.47605	1217.6	0.57
183.18627	21153.5	9.92
196.05084	1196.5	0.56
214.13464	2737.0	1.28
215.11801	72347.8	33.92
245.38909	1153.2	0.54
272.17501	28509.5	13.37
294.89753	1106.8	0.52
311.22200	7674.9	3.60
329.23406	24710.6	11.59
396.31310	24226.0	11.36
414.32274	50391.8	23.63



NL: 1.09E6
 Hcurta#3499 RT: 8.73
 AV: 1 T: FTMS + p ESI
 Full lock ms
 [100.00-1500.00]

NL: 2.08E5
 Hcurta#3487-3510 RT:
 8.71-8.75 AV: 4 F: FTMS
 + p ESI d Full ms2
 473.40@hcd35.00
 [50.00-500.00]