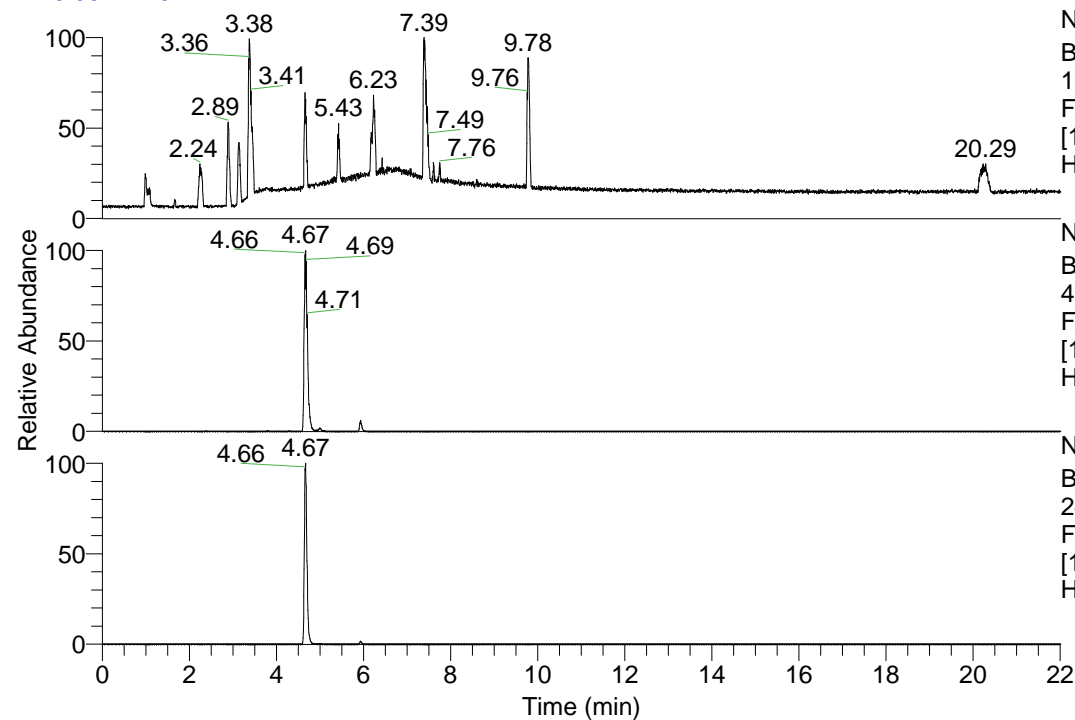


RT: 0.00 - 22.01



NL: 1.13E8
 Base Peak m/z=
 100.00000-1500.00000 F:
 FTMS + p ESI Full ms
 [100.00-1500.00] MS
 Hcurta_HDX

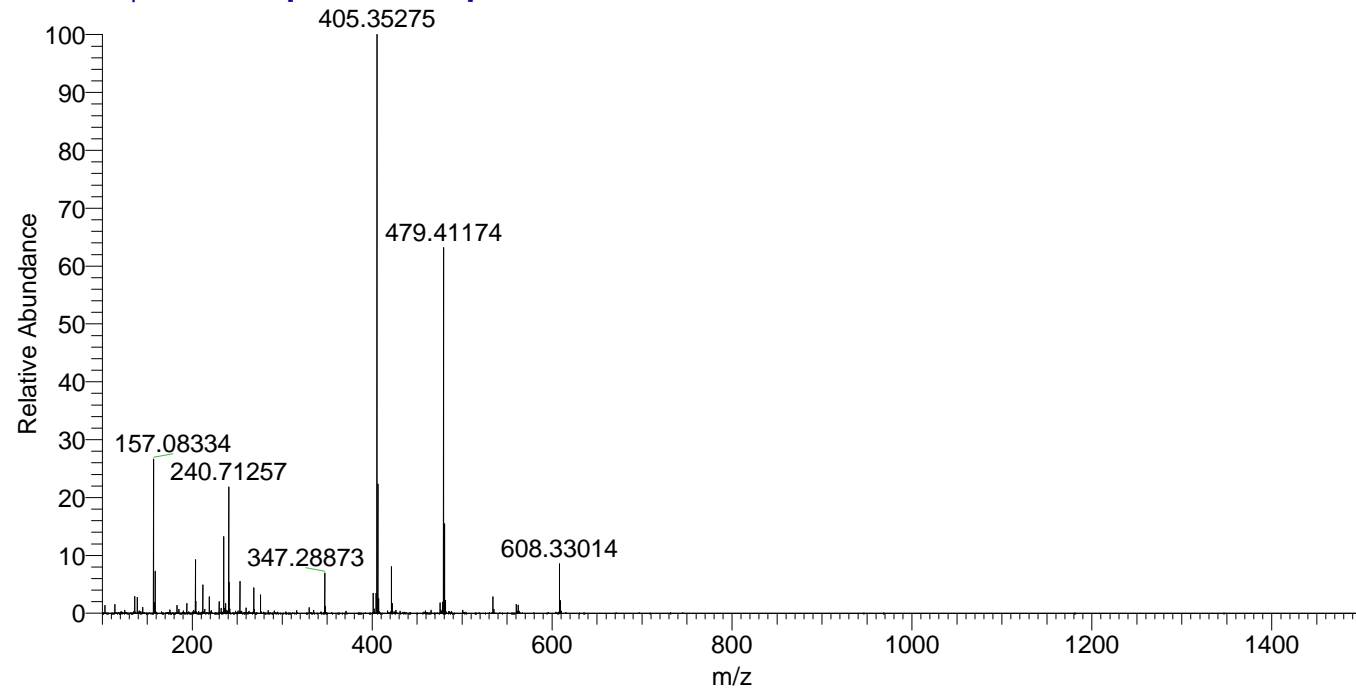
NL: 4.54E7
 Base Peak m/z=
 479.41060-479.41540 F:
 FTMS + p ESI Full ms
 [100.00-1500.00] MS
 Hcurta_HDX

NL: 1.57E7
 Base Peak m/z=
 240.71235-240.71475 F:
 FTMS + p ESI Full ms
 [100.00-1500.00] MS
 Hcurta_HDX

Hcurta_HDX#734 RT: 4.67
 T: FTMS + p ESI Full ms [100.00-1500.00]
 m/z= 479.00000-480.00000

m/z	Intensity	Relative	Delta (ppm)	Composition
479.41174	45419904.0	100.00	-1.47	C ₂₃ H ₃₅ ² H ₁₀ O ₄ N ₆
			1.76	C ₂₃ H ₃₃ ² H ₁₁ O ₄ N ₆
			-4.70	C ₂₃ H ₃₇ ² H ₉ O ₄ N ₆
			4.99	C ₂₃ H ₃₁ ² H ₁₂ O ₄ N ₆

Hcurta_HDX #734 RT: 4.67 AV: 1 NL: 7.01E7
 T: FTMS + p ESI Full ms [100.00-1500.00]



Hcurta_HDX #734 RT: 4.67 AV: 1 NL: 4.43E7
 T: FTMS + p ESI Full ms [100.00-1500.00]

