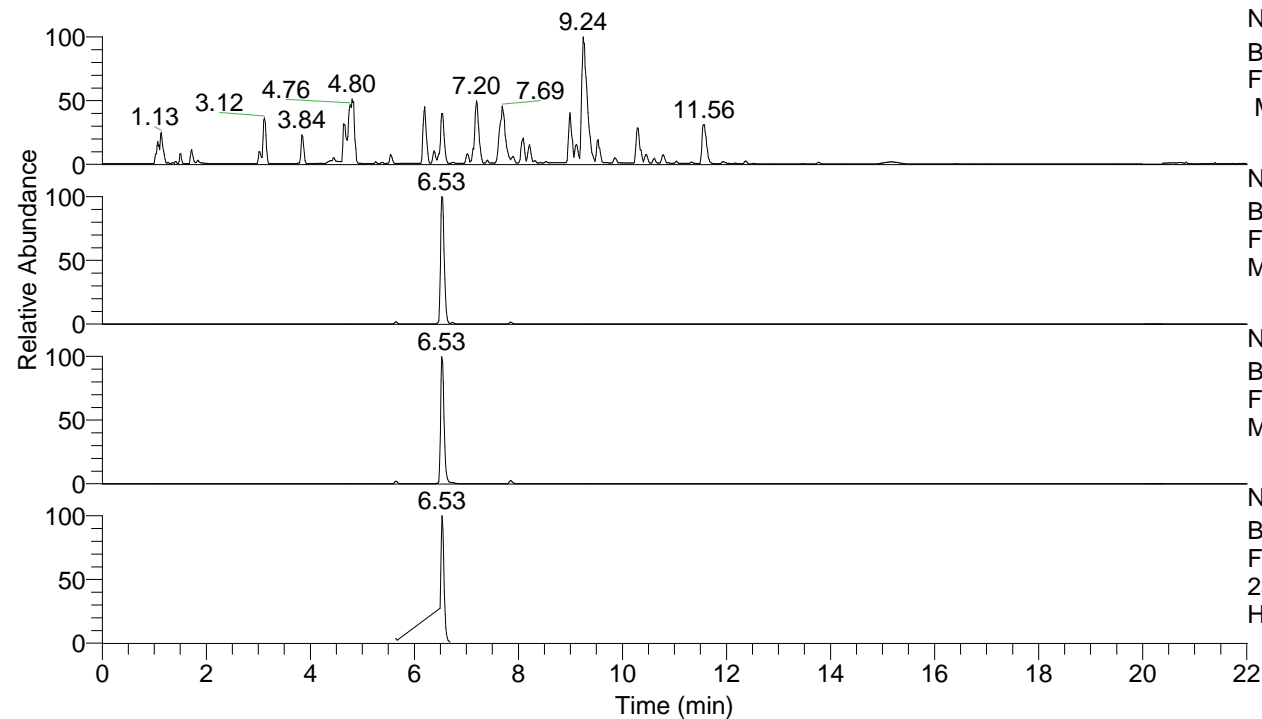


RT: 0.00 - 22.01



NL: 8.52E7  
 Base Peak m/z= 100.00000-1500.00000  
 F: FTMS + p ESI Full ms [100.00-1500.00]  
 MS Hcurta

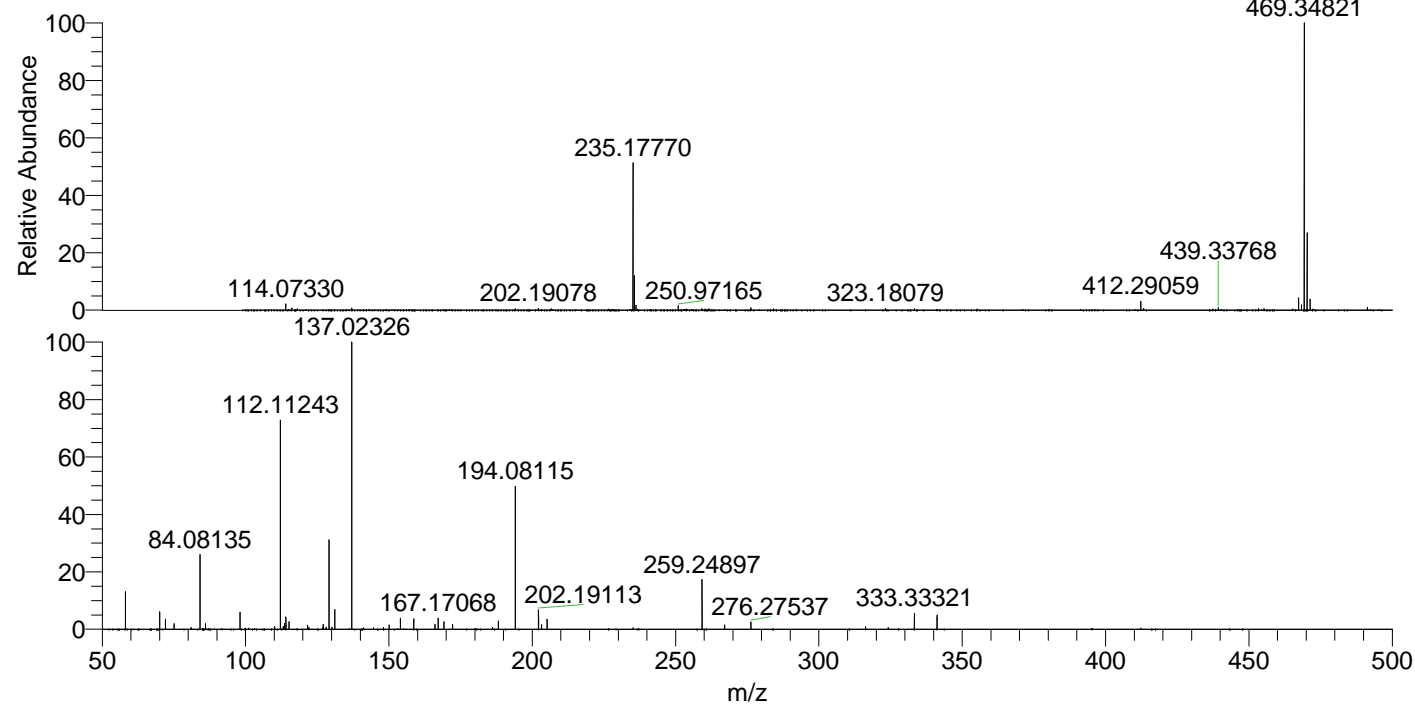
NL: 3.42E7  
 Base Peak m/z= 469.34554-469.35492 F:  
 FTMS + p ESI Full ms [100.00-1500.00]  
 MS Hcurta

NL: 1.67E7  
 Base Peak m/z= 235.17668-235.18138 F:  
 FTMS + p ESI Full ms [100.00-1500.00]  
 MS Hcurta

NL: 3.03E6  
 Base Peak m/z= 50.00000-1500.00000 F:  
 FTMS + p ESI d Full ms2  
 235.18@hcd35.00 [50.00-500.00] MS  
 Hcurta

Hcurta#2608-2637 RT: 6.51-6.58 AV: 6  
 F: FTMS + p ESI d Full ms2 235.18@h ...  
 m/z= 50.00000-1000.00000

m/z	Intensity	Relative
58.06595	273959.2	13.22
70.06585	125144.9	6.04
72.08156	74234.0	3.58
75.09237	40275.6	1.94
81.03421	13619.8	0.66
84.08135	540138.9	26.07
86.06056	40238.1	1.94
98.09684	126405.1	6.10
110.09677	21284.1	1.03
112.11243	1507738.9	72.77
113.10754	18776.4	0.91
113.61774	42969.9	2.07
114.09160	90110.5	4.35
115.12315	55010.2	2.65
121.61513	27980.0	1.35
122.13109	12078.1	0.58
127.12302	37621.0	1.82
128.10695	13897.7	0.67
129.13871	667633.6	32.22
130.12838	13993.7	0.68
131.11790	141749.9	6.84
137.02326	2072014.6	100.00
144.64164	11744.5	0.57
148.14403	12033.7	0.58
150.14366	31424.8	1.52
154.05004	78918.3	3.81
158.65701	73729.4	3.56
166.04980	37337.4	1.80
167.17068	79659.2	3.84
169.16996	53856.3	2.60
172.18092	36292.3	1.75
186.19649	13767.0	0.66
188.17584	58210.6	2.81
194.08115	1026869.1	49.56
202.19113	140204.7	6.77
203.22305	33525.4	1.62
205.20241	73215.1	3.53
259.24897	370450.1	17.88
267.13283	30853.4	1.49
276.27537	53887.9	2.60
316.30664	17911.2	0.86
324.19051	12669.9	0.61
333.33321	114976.1	5.55
341.21760	102238.8	4.93



NL: 3.25E7  
 Hcurta#2617 RT: 6.53  
 AV: 1 T: FTMS + p ESI  
 Full ms [100.00-1500.00]

NL: 2.06E6  
 Hcurta#2604-2640 RT:  
 6.51-6.58 AV: 6 F: FTMS  
 + p ESI d Full ms2  
 235.18@hcd35.00  
 [50.00-500.00]