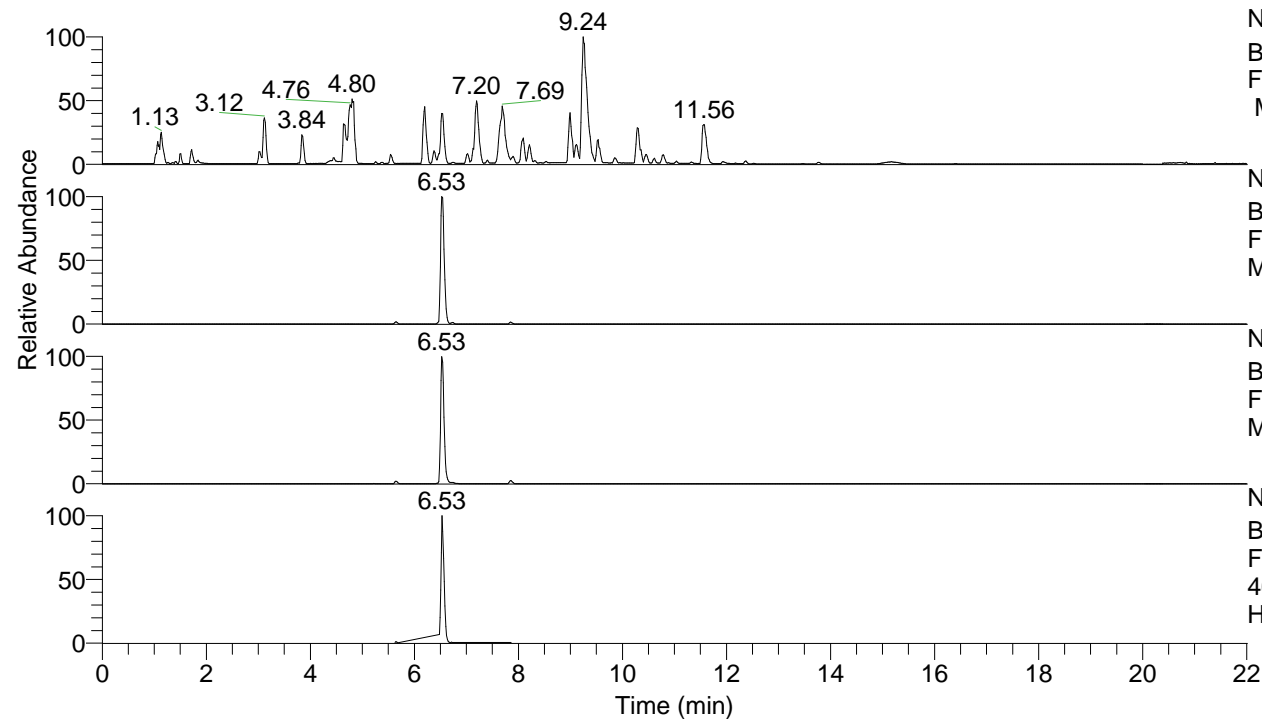


RT: 0.00 - 22.01



NL: 8.52E7
 Base Peak m/z= 100.00000-1500.00000
 F: FTMS + p ESI Full ms [100.00-1500.00]
 MS Hcurta

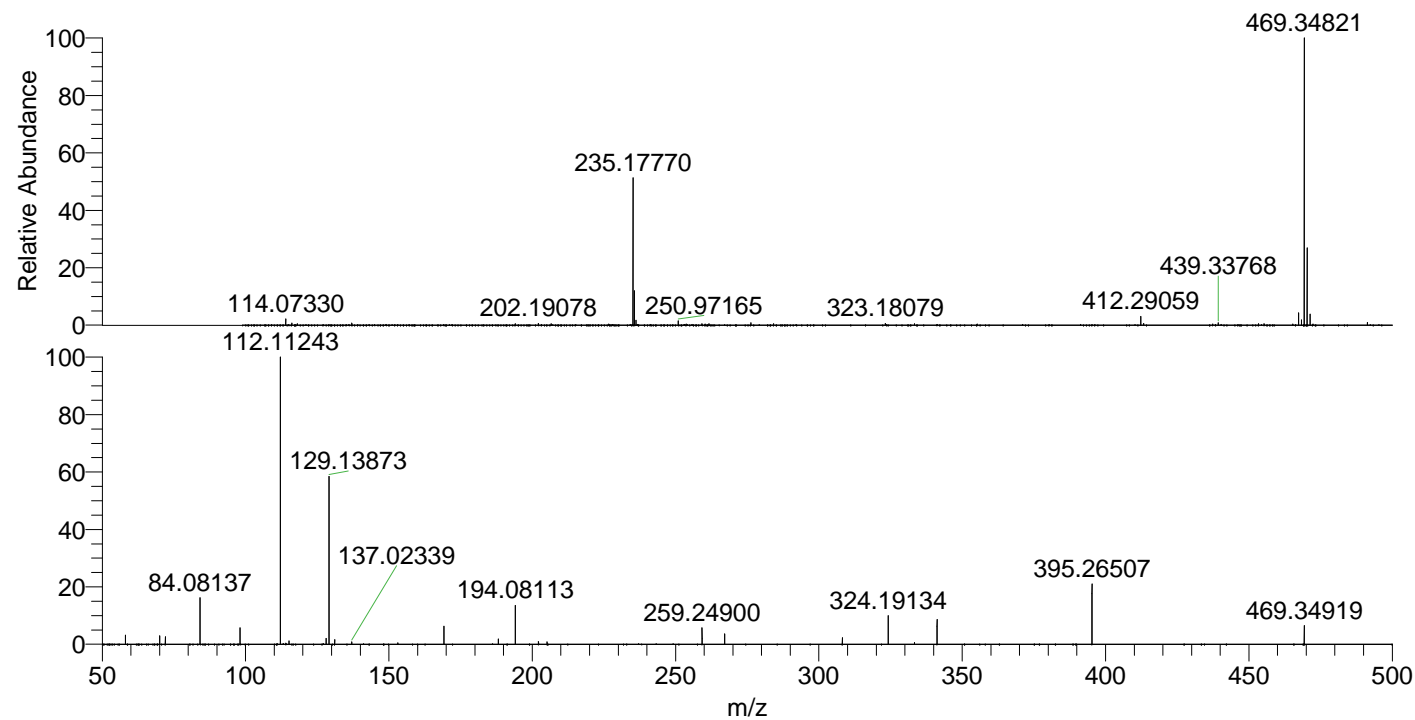
NL: 3.42E7
 Base Peak m/z= 469.34554-469.35492 F:
 FTMS + p ESI Full ms [100.00-1500.00]
 MS Hcurta

NL: 1.67E7
 Base Peak m/z= 235.17668-235.18138 F:
 FTMS + p ESI Full ms [100.00-1500.00]
 MS Hcurta

NL: 9.51E6
 Base Peak m/z= 50.00000-1500.00000 F:
 FTMS + p ESI d Full ms2
 469.35@hcd35.00 [50.00-495.00] MS
 Hcurta

Hcurta#2598-2642 RT: 6.48-6.59 AV: 9
 F: FTMS + p ESI d Full ms2 469.35@h ...
 m/z= 50.00000-1000.00000

m/z	Intensity	Relative
58.06595	149804.4	3.22
70.06585	138919.4	2.99
72.08151	124123.0	2.67
84.08137	760133.8	16.34
98.09691	274174.5	5.89
112.11243	4652684.0	100.00
115.12330	55916.2	1.20
128.10712	97241.8	2.09
129.13873	2797547.8	60.13
131.11794	73838.5	1.59
137.02339	38801.9	0.83
169.16985	293420.1	6.31
188.17607	82851.8	1.78
194.08113	630549.9	13.55
202.19110	43119.6	0.93
205.20253	40112.5	0.86
259.24901	273955.8	5.89
267.13353	170026.4	3.65
308.19676	106847.5	2.30
324.19134	479654.1	10.31
333.33289	30417.7	0.65
341.21779	401035.9	8.62
395.26507	976625.1	20.99
469.34918	306123.2	6.58



NL: 3.25E7
 Hcurta#2617 RT: 6.53
 AV: 1 T: FTMS + p ESI
 Full ms [100.00-1500.00]

NL: 5.14E6
 Hcurta#2599-2646 RT:
 6.49-6.59 AV: 8 F: FTMS
 + p ESI d Full ms2
 469.35@hcd35.00
 [50.00-495.00]